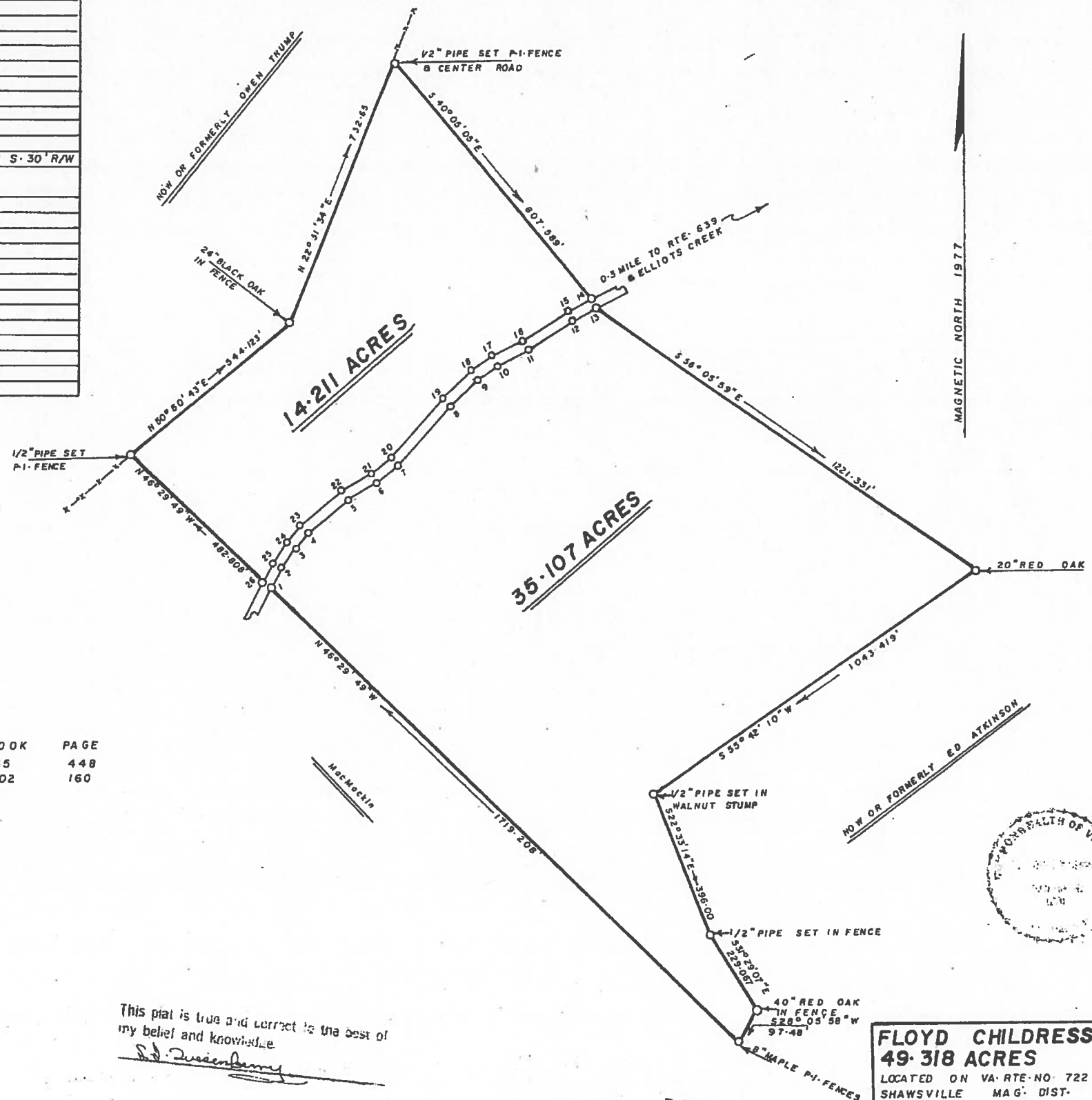


ON BEARING	DISTANCE	DESCRIPTION
		1/2" PIPE SET ON S. 30' R/W RTE. 722
N 28° 42' 06" E	62.492'	PT. ON R/W
N 33° 37' 46" E	63.131'	" " "
N 41° 15' 19" E	50.19'	" " "
N 50° 21' 55" E	136.942'	" " "
N 60° 41' 39" E	88.382'	" " "
N 52° 20' 04" E	72.267'	" " "
N 41° 33' 54" E	206.249'	" " "
N 47° 27' 10" E	99.786'	" " "
N 55° 35' 04" E	63.078'	" " "
N 63° 06' 48" E	90.799'	" " "
N 57° 01' 17" E	140.124'	" " "
N 61° 47' 47" E	80.501'	1/2" PIPE SET AGAINST ELM STUMP ON S. 30' R/W
		1/2" ROD SET N. 30' R/W RTE. 722
S 61° 47' 47" W	75.443'	PT. ON R/W
S 47° 01' 17" W	139.774'	" " "
S 63° 06' 48" W	91.182'	" " "
S 55° 35' 04" W	67.182'	" " "
S 47° 27' 10" W	103.482'	" " "
S 41° 33' 54" W	206.947'	" " "
S 52° 20' 04" W	67.247'	" " "
S 60° 41' 39" W	88.892'	" " "
S 50° 21' 55" W	142.05'	" " "
S 41° 15' 19" W	54.57'	" " "
S 33° 37' 46" W	66.437'	" " "
S 28° 42' 06" W	55.845'	1/4" PIPE SET N. 30' R/W RTE. 722



DEED REFERENCE :	BOOK	PAGE
	65	448
	102	160

This plat is true and correct to the best of my belief and knowledge.  
*S. J. Quisenberry*

This Plat is a part of DEED  
 RECORDED June 2 1978  
 in Deed Book 399 Page 529

**FLOYD CHILDRESS JR.**  
**49.318 ACRES**  
 LOCATED ON VA. RTE. NO. 722  
 SHAWSVILLE MAG. DIST.  
 MONTGOMERY COUNTY, VIRGINIA  
 SCALE: 1" = 200' 4 APRIL 1977  
 L. J. QUESENBERY L.S.  
 DUGSPUR, VIRGINIA 24325  
 REV.



9-76

MAGNETIC NORTH 1977