

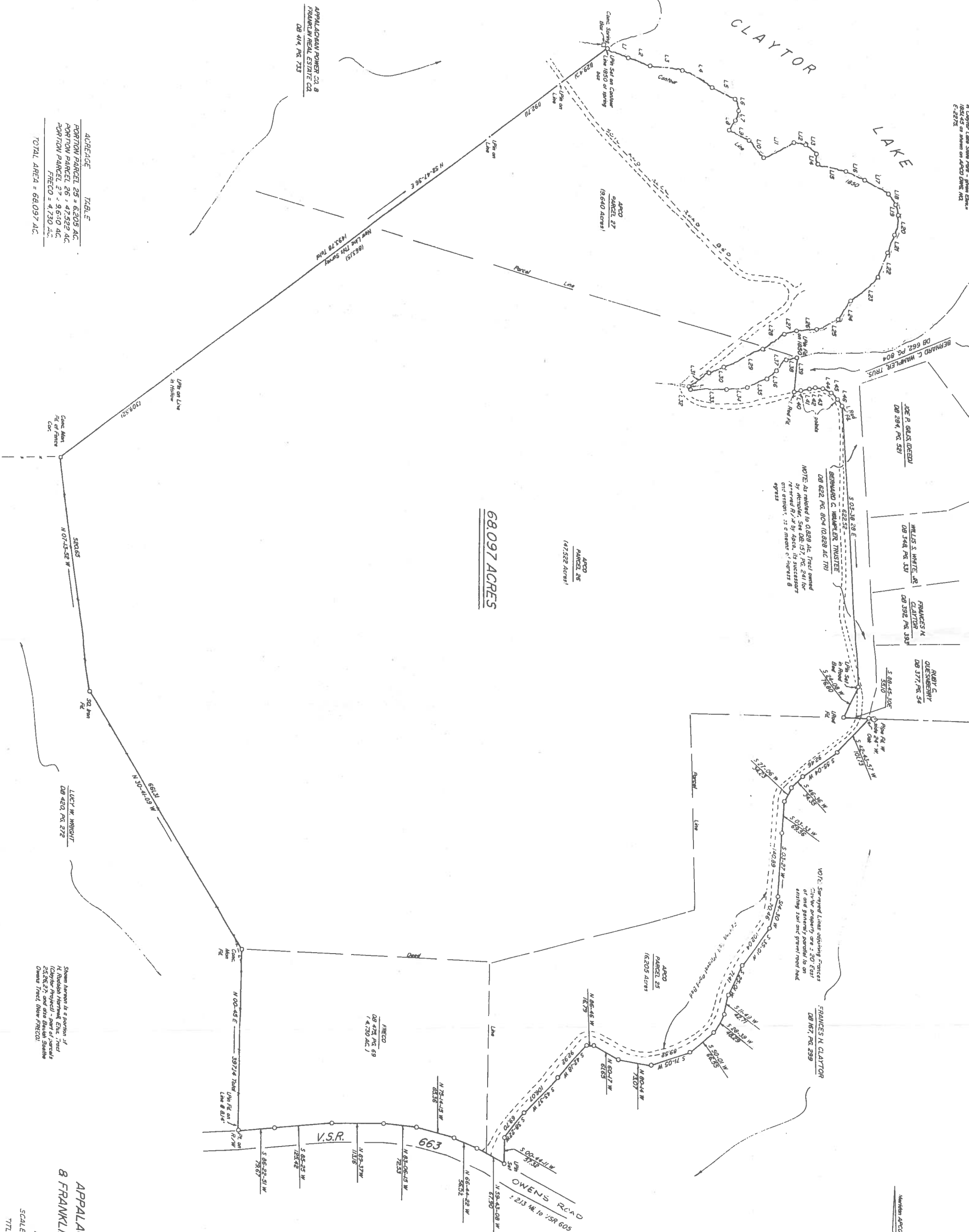


NOTES:
 This survey was performed without the benefit of a title report.
 This plat was prepared from a certified field survey.

COMPARISON

LINE	BEARING	DISTANCE
L-1	S 86-52-51 W	50.37
L-2	S 86-42-51 W	71.88
L-3	S 86-42-51 W	74.91
L-4	S 86-42-51 W	26.88
L-5	S 86-42-51 W	26.88
L-6	S 86-42-51 W	26.88
L-7	S 86-42-51 W	26.88
L-8	S 86-42-51 W	26.88
L-9	S 86-42-51 W	26.88
L-10	S 86-42-51 W	26.88
L-11	S 86-42-51 W	26.88
L-12	S 86-42-51 W	26.88
L-13	S 86-42-51 W	26.88
L-14	S 86-42-51 W	26.88
L-15	S 86-42-51 W	26.88
L-16	S 86-42-51 W	26.88
L-17	S 86-42-51 W	26.88
L-18	S 86-42-51 W	26.88
L-19	S 86-42-51 W	26.88
L-20	S 86-42-51 W	26.88
L-21	S 86-42-51 W	26.88
L-22	S 86-42-51 W	26.88
L-23	S 86-42-51 W	26.88
L-24	S 86-42-51 W	26.88
L-25	S 86-42-51 W	26.88
L-26	S 86-42-51 W	26.88
L-27	S 86-42-51 W	26.88
L-28	S 86-42-51 W	26.88
L-29	S 86-42-51 W	26.88
L-30	S 86-42-51 W	26.88
L-31	S 86-42-51 W	26.88
L-32	S 86-42-51 W	26.88
L-33	S 86-42-51 W	26.88
L-34	S 86-42-51 W	26.88
L-35	S 86-42-51 W	26.88
L-36	S 86-42-51 W	26.88
L-37	S 86-42-51 W	26.88
L-38	S 86-42-51 W	26.88
L-39	S 86-42-51 W	26.88
L-40	S 86-42-51 W	26.88
L-41	S 86-42-51 W	26.88
L-42	S 86-42-51 W	26.88
L-43	S 86-42-51 W	26.88
L-44	S 86-42-51 W	26.88
L-45	S 86-42-51 W	26.88

APPROXIMATE DISTANCE FROM
 CLAYTOR LAKE SHORE TO
 CENTER OF APPOD TRAIL
 68.097 ACRES



68.097 ACRES

ACREAGE TABLE

PORTION PARCEL 25	= 6.205 AC.
PORTION PARCEL 26	= 47.322 AC.
PORTION PARCEL 27	= 9.670 AC.
FREC'D	= 4.730 AC.
TOTAL AREA	= 68.097 AC.

PLAT PREPARED FOR
APPALACHIAN POWER COMPANY
8 FRANKLIN REAL ESTATE COMPANY
 INGLETS DISTRICT
 PULASKI COUNTY, VIRGINIA
 SCALE: 1" = 100' - DATE: 3/09/2001
 TITLE REF: DB 414, PG. 733 (PART I)
 DB: 475, PG. 69 (FREC'D)