

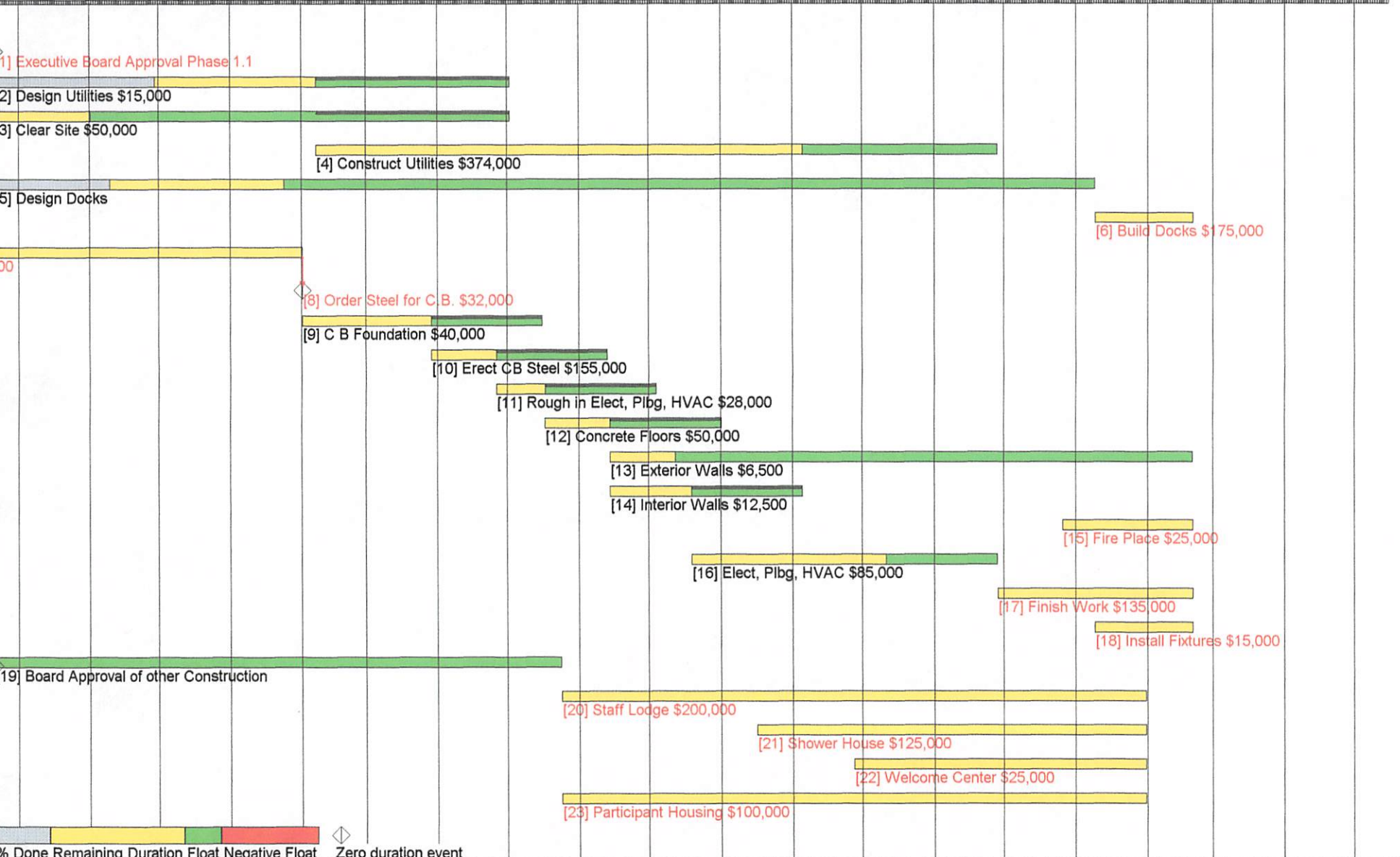
Claytor Lake Adventure Base

Budget Central Building

Items :	Detailed Description	Working Estimate Preliminary Cost 1	Firm Estimate #'s Preliminary Cost 2	Issued Contracts Contract Costs	Final Costs	Variance
1	Architects Help	4000				
2	Engineering Design Concrete	2500				
3	Engineering Design Structure	1000				
4	Engineering Footings	1500				
5	Excavate Site	12000				
6	Pour Footings	5500				
7	Purchase Steel	155000				
8	Erect Steel	32000				
9	Pour Basement Walls	15750				
10	Rough In Plumbing	8000				
11	Rough In Electrical	15000				
12	Rough In HVAC	5000				
13	Concrete Floors	50000				
14	Build Rough Outside Walls	6500				
15	Rough In Basement inside Walls	12500				
16	Fire Place	25000				
17	Kitchen Equipment Includes Tables	85000				
18	Install Kitchen Equipment	15000				
19	Final Plumbing	20000				
20	Final Electrical	25000				
21	Final HVAC	15000				
22	Install Septic	35000				
23	Finish Work	30000				
24	Stone Cladding	7500				
25	Retaining Walls and Steps	25000				
26	Windows and Doors	20000				
27	Wood Cladding and Paint	5500				
28	Final Cleanup	2500				
29	Flag Poles	2500				
30	Project Manager	15000				
31	Seeding	2000				
	Total Cost	656250				
	Contingency	93750				
	Grand Total Cost	750000				

Company: BRMC
Project: Claytor Lake High Adventure Base
Author: Smith Chaney
Account:
Date: 24-Jan-2006

Oct 2005 Nov 2005 Dec 2005 Jan 2006 Feb 2006 Mar 2006 Apr 2006 May 2006 Jun 2006 Jul 2006 Aug 2006 Sep 2006 Oct 2006 Nov 2006 Dec 2006 Jan 2007 Feb 2007 Mar 2007 Apr 2007
 20 30 10 20 30 9 19 29 9 19 29 8 18 28 7 17 27 9 19 29 8 18 28 8 18 28 7 17 27 7 17 27 6 16 26 5 15 25 5 15 25 4 14 24 4 14 24 3 13 23 2 12 22 4 14 24 3 13 23 3 13

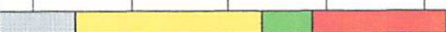


% Done Remaining Duration Float Negative Float Zero duration event

Company: BRMC
Project: Claytor Lake High Adventure Base
Author: Smith Chaney
Account:
Date: 24-Jan-2006

Oct 2005	Nov 2005	Dec 2005	Jan 2006	Feb 2006	Mar 2006	Apr 2006	May 2006	Jun 2006	Jul 2006	Aug 2006	Sep 2006	Oct 2006	Nov 2006	Dec 2006	Jan 2007	Feb 2007	Mar 2007	Apr 2007																																										
20	30	10	20	30	9	19	29	9	19	29	8	18	28	7	17	27	9	19	29	8	18	28	8	18	28	7	17	27	7	17	27	6	16	26	5	15	25	5	15	25	4	14	24	4	14	24	3	13	23	2	12	22	4	14	24	3	13	23	3	13

[24] Chapel \$25,000


 % Done Remaining Duration Float Negative Float Zero duration event

Company: BRMC
Project: Claytor Lake High Adventure Base
Author: Smith Chaney
Account:
Date: 24-Jan-2006

20-Sep-2005	EVENT
[1] Executive Board Approval Phase 1.1	
FIXED	20-Sep-2005

20-Sep-2005	07-Feb-2006
[2] Design Utilities \$15 000	
13-Dec-2005	02-May-2006

07-Feb-2006	05-Sep-2006
[4] Construct Utilities 374,000	
02-May-2006	28-Nov-2006

26-Apr-2006	17-May-2006
[11] Rough in Elect, Plbg, HVAC \$28,000	
13-Jun-2006	04-Jul-2006

17-May-2006	14-Jun-2006
[12] Concrete Floors \$50 000	
04-Jul-2006	01-Aug-2006

22-Jun-2005	01-Feb-2006
[7] Design Central Building \$4,000	
FIXED	01-Feb-2006

20-Sep-2005	01-Nov-2005
[3] Clear Site \$50,000	
21-Mar-2006	02-May-2006

09-Jan-2007	20-Feb-2007
[6] Build Docks \$175,000	
FIXED	20-Feb-2007

20-Sep-2005	24-Jan-2006
[5] Design Docks	
05-Sep-2006	09-Jan-2007

29-Mar-2006	26-Apr-2006
[10] Erect CB Steel \$155 000	
16-May-2006	13-Jun-2006

01-Feb-2006	EVENT
[8] Order Steel for C.B. \$32,000	
FIXED	01-Feb-2006

24-May-2006	31-Jan-2007
[20] Staff Lodge \$200 000	
FIXED	31-Jan-2007

01-Feb-2006	29-Mar-2006
[9] C B Foundation \$40 000	
21-Mar-2006	16-May-2006

16-Aug-2006	31-Jan-2007
[21] Shower House \$125 000	
FIXED	31-Jan-2007

20-Sep-2005	EVENT
[19] Board Approval of other Construction	
24-May-2006	24-May-2006

27-Sep-2006	31-Jan-2007
[22] Welcome Center \$25 000	
FIXED	31-Jan-2007

24-May-2006	31-Jan-2007
[23] Participant Housing \$100,000	
FIXED	31-Jan-2007

08-Nov-2006	31-Jan-2007
[24] Chapel \$25,000	
FIXED	31-Jan-2007

Early Start	Early Finish
Task Name or Description	
Late Start	Late Finish

1
[
5
2
1
[
5
0
2
[
F

Company: BRMC
Project: Claytor Lake High Adventure Base
Author: Smith Chaney
Account:
Date: 24-Jan-2006

14-Jun-2006	12-Jul-2006
[13] Exterior Walls \$8 500	
23-Jan-2007	20-Feb-2007

19-Jul-2006	11-Oct-2006
[16] Elect, Plbg, HVAC 85,000	
05-Sep-2006	28-Nov-2006

28-Nov-2006	20-Feb-2007
[17] Finish Work \$135 000	
FIXED	20-Feb-2007

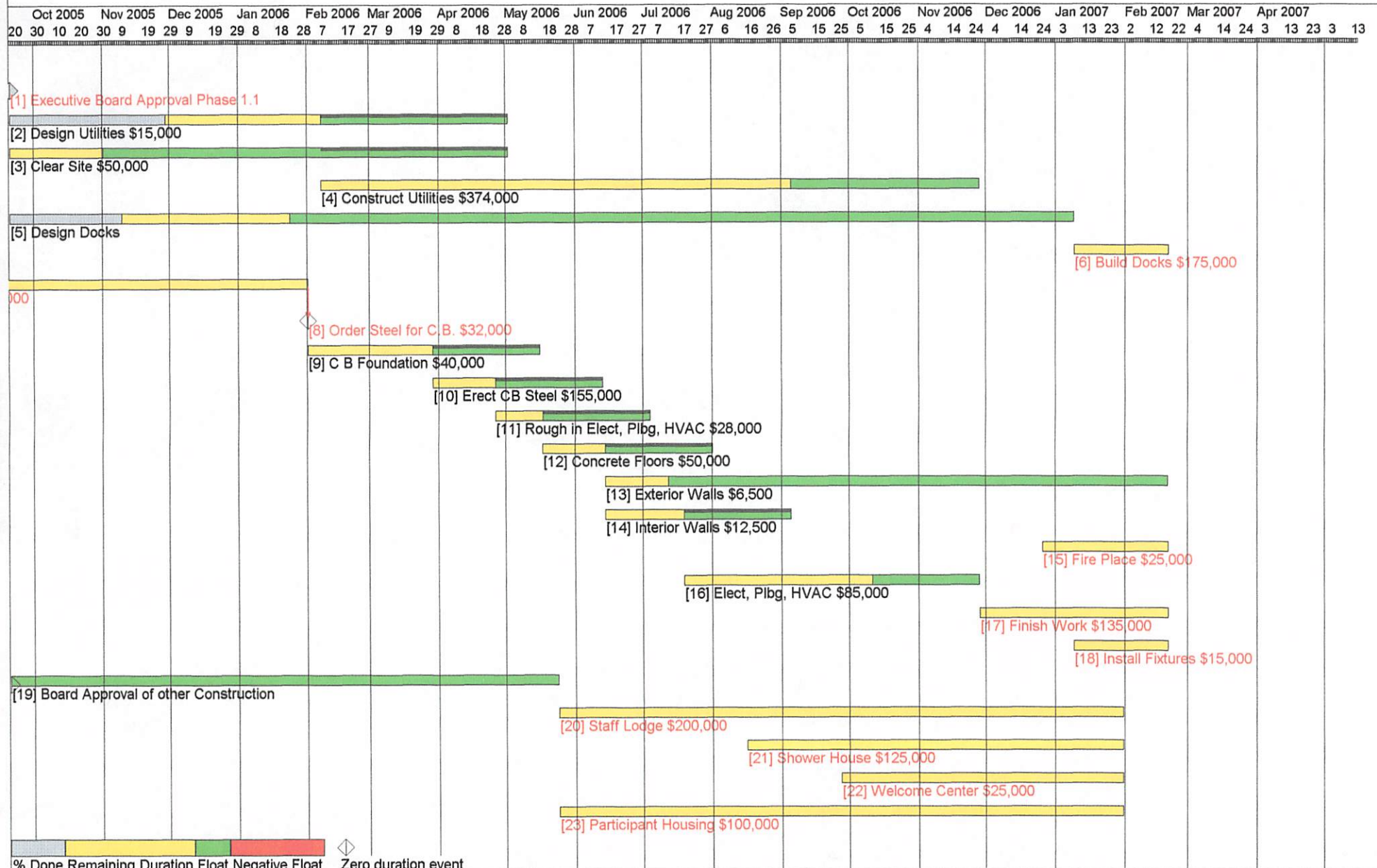
14-Jun-2006	19-Jul-2006
[14] Interior Walls \$12 500	
01-Aug-2006	05-Sep-2006

09-Jan-2007	20-Feb-2007
[18] Install Fixtures 15,000	
FIXED	20-Feb-2007

26-Dec-2006	20-Feb-2007
[15] Fire Place \$25,000	
FIXED	20-Feb-2007

Early Start	Early Finish
Task Name or Description	
Late Start	Late Finish

Company: BRMC
Project: Claytor Lake High Adventure Base
Author: Smith Chaney
Account:
Date: 24-Jan-2006



Company: BRMC
 Project: Claytor Lake High Adventure Base
 Author: Smith Chaney
 Account:
 Date: 24-Jan-2006

Oct 2005	Nov 2005	Dec 2005	Jan 2006	Feb 2006	Mar 2006	Apr 2006	May 2006	Jun 2006	Jul 2006	Aug 2006	Sep 2006	Oct 2006	Nov 2006	Dec 2006	Jan 2007	Feb 2007	Mar 2007	Apr 2007																																										
20	30	10	20	30	9	19	29	9	19	29	8	18	28	7	17	27	9	19	29	8	18	28	8	18	28	7	17	27	7	17	27	6	16	26	5	15	25	5	15	25	4	14	24	4	14	24	3	13	23	2	12	22	4	14	24	3	13	23	3	13

[24] Chapel \$25,000

% Done Remaining Duration Float Negative Float Zero duration event

Company: BRMC
Project: Claytor Lake High Adventure Base
Author: Smith Chaney
Account:
Date: 24-Jan-2006

20-Sep-2005	EVENT
[1] Executive Board Approval Phase 1.1	
FIXED	20-Sep-2005

20-Sep-2005	07-Feb-2006
[2] Design Utilities \$15 000	
13-Dec-2005	02-May-2006

07-Feb-2006	05-Sep-2006
[4] Construct Utilities 374,000	
02-May-2006	28-Nov-2006

26-Apr-2006	17-May-2006
[11] Rough in Elect, Plbg, HVAC \$28,000	
13-Jun-2006	04-Jul-2006

17-May-2006	14-Jun-2006
[12] Concrete Floors \$50 000	
04-Jul-2006	01-Aug-2006

22-Jun-2005	01-Feb-2006
[7] Design Central Building \$4,000	
FIXED	01-Feb-2006

20-Sep-2005	01-Nov-2005
[3] Clear Site \$50,000	
21-Mar-2006	02-May-2006

09-Jan-2007	20-Feb-2007
[6] Build Docks \$175,000	
FIXED	20-Feb-2007

20-Sep-2005	24-Jan-2006
[5] Design Docks	
05-Sep-2006	09-Jan-2007

29-Mar-2006	26-Apr-2006
[10] Erect CB Steel \$155 000	
16-May-2006	13-Jun-2006

01-Feb-2006	EVENT
[8] Order Steel for C.B. \$32,000	
FIXED	01-Feb-2006

24-May-2006	31-Jan-2007
[20] Staff Lodge \$200 000	
FIXED	31-Jan-2007

01-Feb-2006	29-Mar-2006
[9] C B Foundation \$40 000	
21-Mar-2006	16-May-2006

16-Aug-2006	31-Jan-2007
[21] Shower House \$125 000	
FIXED	31-Jan-2007

20-Sep-2005	EVENT
[19] Board Approval of other Construction	
24-May-2006	24-May-2006

27-Sep-2006	31-Jan-2007
[22] Welcome Center \$25 000	
FIXED	31-Jan-2007

24-May-2006	31-Jan-2007
[23] Participant Housing \$100,000	
FIXED	31-Jan-2007

08-Nov-2006	31-Jan-2007
[24] Chapel \$25,000	
FIXED	31-Jan-2007

Early Start	Early Finish
Task Name or Description	
Late Start	Late Finish

1
[
5
2
1
[
5
0
2
[
F

Company: BRMC
Project: Claytor Lake High Adventure Base
Author: Smith Chaney
Account:
Date: 24-Jan-2006

14-Jun-2006	12-Jul-2006
[13] Exterior Walls \$6500	
23-Jan-2007	20-Feb-2007

19-Jul-2006	11-Oct-2006
[16] Elect, Pibg, HVAC 85,000	
05-Sep-2006	28-Nov-2006

28-Nov-2006	20-Feb-2007
[17] Finish Work \$135000	
FIXED	20-Feb-2007

14-Jun-2006	19-Jul-2006
[14] Interior Walls \$12500	
01-Aug-2006	05-Sep-2006

09-Jan-2007	20-Feb-2007
[18] install Fixtures 15,000	
FIXED	20-Feb-2007

26-Dec-2006	20-Feb-2007
[15] Fire Place \$25,000	
FIXED	20-Feb-2007

Early Start	Early Finish
Task Name or Description	
Late Start	Late Finish