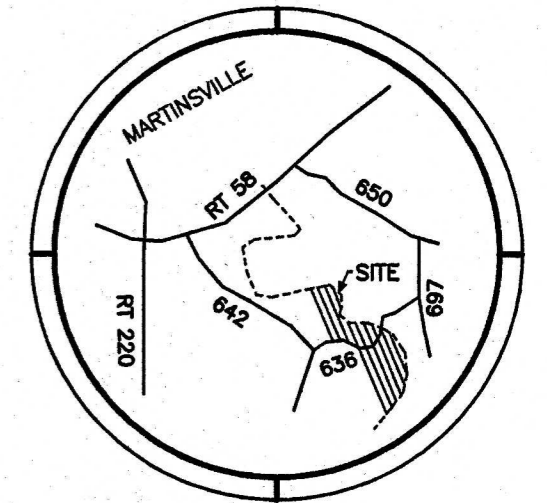
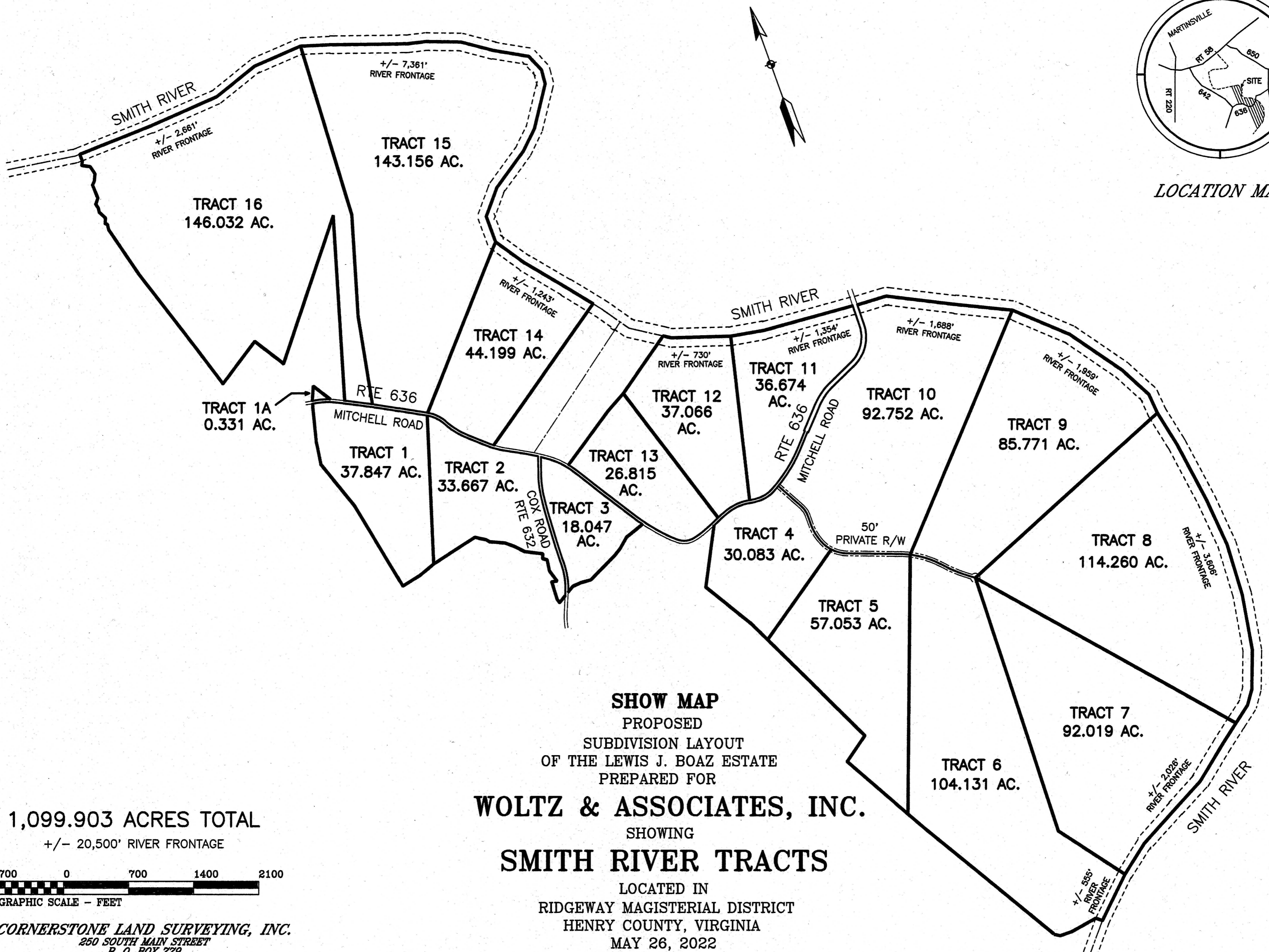


CURRENT OWNER - LEWIS J. BOAZ ESTATE



LOCATION MAP



SHOW MAP
PROPOSED
SUBDIVISION LAYOUT
OF THE LEWIS J. BOAZ ESTATE
PREPARED FOR

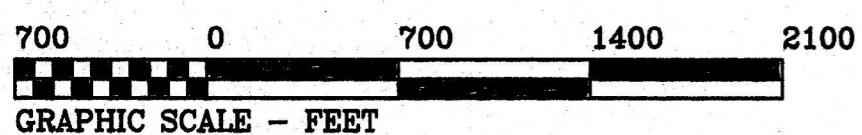
WOLTZ & ASSOCIATES, INC.

SHOWING
SMITH RIVER TRACTS

LOCATED IN
RIDGEWAY MAGISTERIAL DISTRICT
HENRY COUNTY, VIRGINIA

MAY 26, 2022
SCALE 1" = 700'
REVISED: 10-10-22

1,099.903 ACRES TOTAL
+/- 20,500' RIVER FRONTAGE



CORNERSTONE LAND SURVEYING, INC.
250 SOUTH MAIN STREET
P. O. BOX 779
ROCKY MOUNT, VIRGINIA 24151
540-489-3590