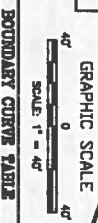


MERIDIAN OF D.B. 777, PG. 595

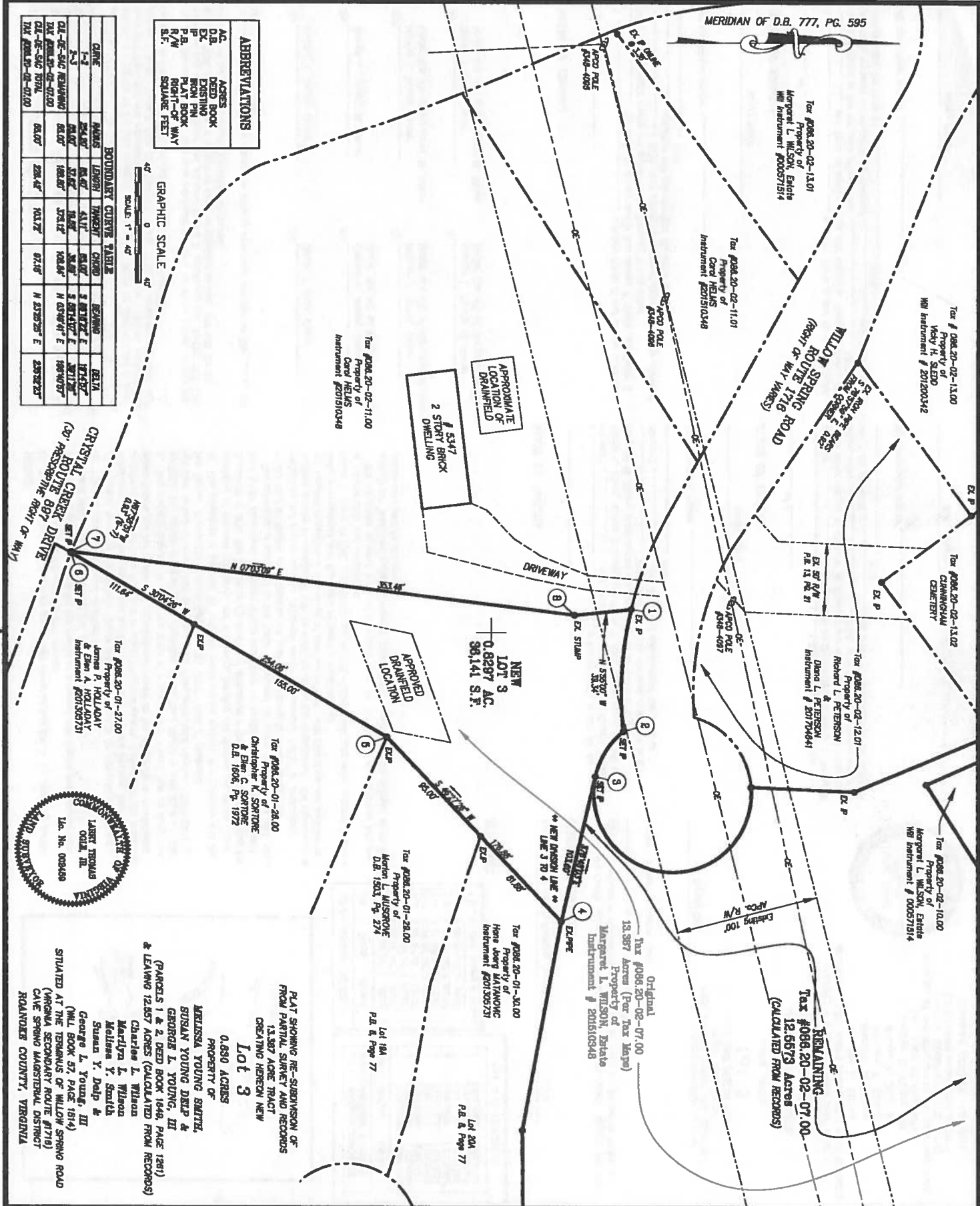
**ABBREVIATIONS**

A.C.	ADJACENT
D.L.	DEED BOOK
E.D.	EXISTING
P.B.	PLAY BOOK
R/W	RIGHT-OF-WAY
S.F.	SQUARE FEET



**BOUNDARY CURVE TABLE**

CURVE	LENGTH	THRESHOLD	CURVED	BEARING	BETA
1-1	154.07'	154.07'	ASIT	S 89°12' E	173.53'
1-2	154.07'	154.07'	ASIT	S 89°12' E	173.53'
2-1	154.07'	154.07'	ASIT	S 89°12' E	173.53'
2-2	154.07'	154.07'	ASIT	S 89°12' E	173.53'
3-1	154.07'	154.07'	ASIT	S 89°12' E	173.53'
3-2	154.07'	154.07'	ASIT	S 89°12' E	173.53'
4-1	154.07'	154.07'	ASIT	S 89°12' E	173.53'
4-2	154.07'	154.07'	ASIT	S 89°12' E	173.53'



INSTRUMENT #

INSTRUMENT #

PLAY SHOWING RE-SUBDIVISION OF  
FROM PARTIAL SURVEY AND RECORDS  
13.587 ACRE TRACT  
CREATING HEREON NEW  
**Lot 3**  
0.680 ACRES  
PROPERTY OF  
**MERISSA YOUNG SMITZ,  
SUSAN YOUNG DEEP &  
GEORGE L. YOUNG, III**  
Charles L. Wilson  
Marilyn L. Wilson  
Melissa Y. Smith  
Susan Y. Deep &  
George L. Young, III  
(MIL BOOK 57, PAGE 1814)  
SITUATED AT THE TERMINUS OF MILLOW SPRING ROAD  
(VIRGINIA SECONDARY ROUTE #1716)  
CAVE SPRING MANORIAL DISTRICT  
ROANOKE COUNTY, VIRGINIA

**LUMSDEN ASSOCIATES, P.C.**  
ENGINEERS-SURVEYORS-PLANNERS  
ROANOKE, VIRGINIA

4664 BRAMBLETON AVENUE, SW  
P.O. BOX 20669  
ROANOKE, VIRGINIA 24018

PHONE: (540) 774-4411  
FAX: (540) 772-9445  
E-MAIL: MAIL@LUMSDENPC.COM

DATE:	March 12, 2018
COMM. NO.:	2018-025
SCALE:	1" = 40'
SHEET:	2 OF 2