



**BALZER
& ASSOCIATES**
PLANNERS / ARCHITECTS
ENGINEERS / SURVEYORS

Roanoke / Richmond
New River Valley / Staunton
Harrisonburg / Lynchburg
www.balzer.cc

1208 Corporate Circle
Roanoke, VA 24018
540.772.9580

PRELIMINARY
NOT FOR CONSTRUCTION

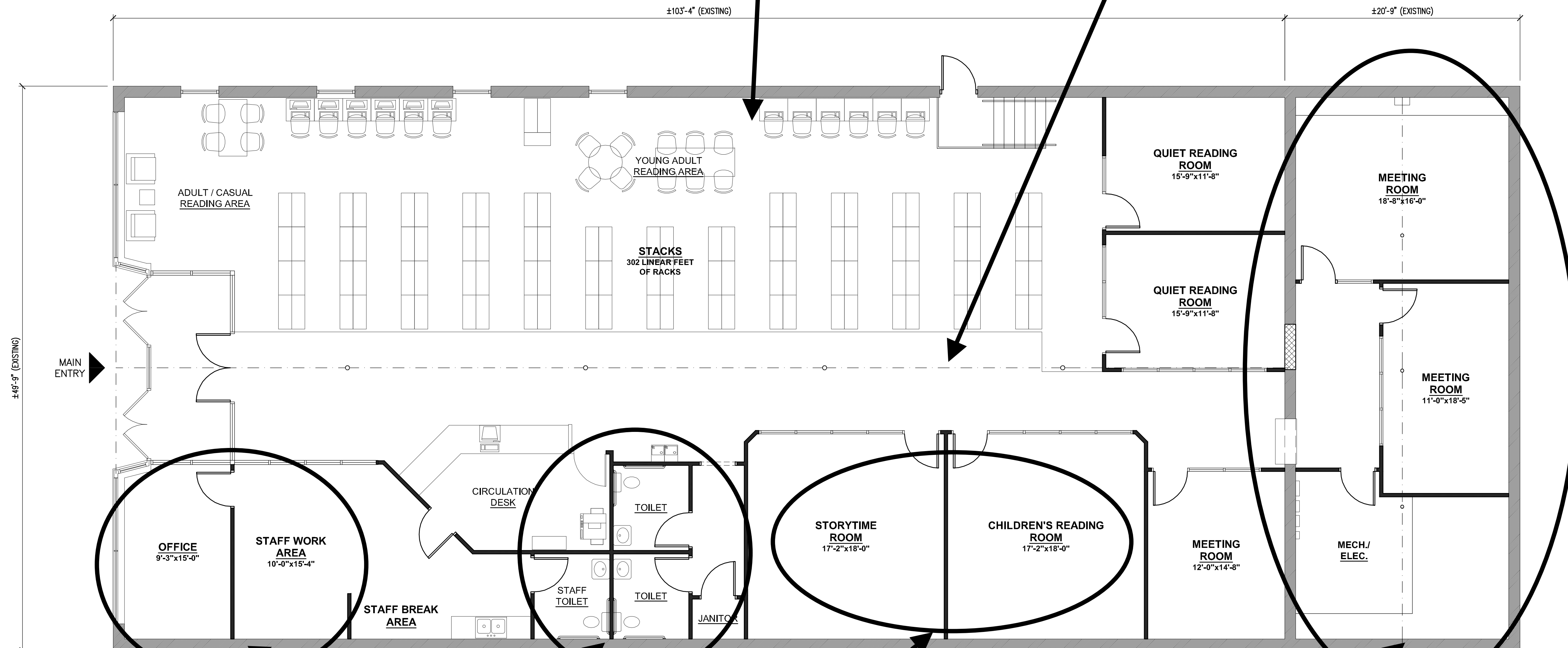
"RAMSEY BLDG" (P4) RENOVATION
BUENA VISTA LIBRARY
RENOVATION BUILDING PLAN

DRAWN BY RWP
DESIGNED BY RWP
CHECKED BY —
DATE 11/08/2019
SCALE AS INDICATED
REVISIONS

A1.1
PROJECT NO 03180072.00

Given that the windows are on this wall, could it make sense to flip the stuff on this half of the building with what is currently on the lower half? Or, how can we best utilize light for folks in the inside and how can we have the most active display of activity visible from the outside?

The "flip" would be with respect to this dividing line



Make this another adult/casual reading area; move the staff work/break areas to the back of the building

**BUENA VISTA LIBRARY
BUILDING PLAN**

1
A1.1
SCALE: 3/16"= 1'-0"

If we move bathrooms to the back, could this be another open table space?

- Can we make the wall separating these spaces retractable, and note it as being such?
- We we re-label this space as "Community Meeting Room"

Is this area at grade?
Can we move the staff break area and bathrooms back here? (there's plumbing, as this is where the bathrooms currently are)