

Building	Description	Drafting(D.F.) Table For Lot 7	Health Department Identification Number	Number Of Bedrooms
D	Main Dwelling	Using Drafted 7	92-117-059	6 Total
E	Used As An Office	Using Drafted 7	92-117-059	6 Total
F	Guest House	Using Drafted 7	92-117-059	6 Total

Virginia State Plane
Coordinate System
Grid North - South Zone



THOMPSON & LITTON
776 Auburn Avenue
Radford, Virginia 24141

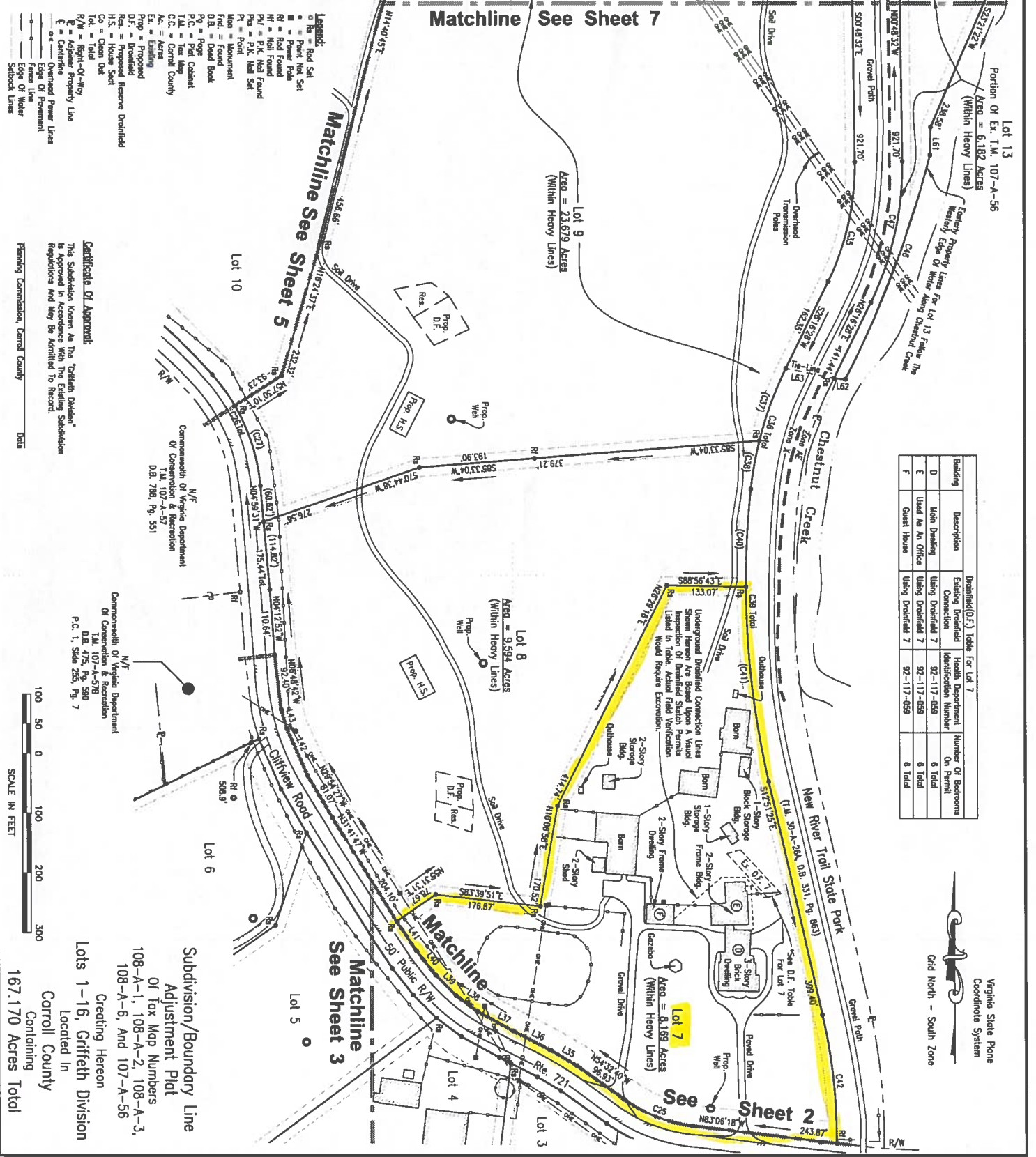
Subdivision/Boundary Line Adjustment Plat
Griffeth Division
Sulphur Springs Magisterial District
Carroll County, Virginia

Designed: —
Drawn: JLN
Checked: CHF
Date: 1 OCT 2012

Project Number:
11819-001

Sheet No.
4 Of 8

Subdivision/Boundary Line
Adjustment Plat
Of Tax Map Numbers
108-A-1, 108-A-2, 108-A-3,
108-A-6, And 107-A-56
Creating Heron
Located In
Carroll County
Containing
167.170 Acres Total



Legend:
 o Ra = Road Set
 o Pa = Point Not Set
 o P = Power Pole
 Ri = Road Found
 Ri = Rail Found
 Pk = Pk. Not Found
 Pk = Pk. Found
 Pk = Pk. Not Set
 Pk = Pk. Found
 M = Monument
 Fd = Found
 D.B. = Deed Book
 Pp = Page
 P.C. = Plat Cabinet
 T.M. = Tax Map
 C.C. = Control County
 Ex = Existing
 Prop = Proposed
 D.F. = Drafted
 Res. = Reseved
 H.S. = House Set
 Co = Clean Out
 10k = Total
 1/4W = Right-Of-Way
 E = Adjacent Property Line
 Dashed Power Lines
 at = Damaged Power Lines
 Edge Of Foreman
 Face Line
 Sublot Lines

Certificate Of Approval:
 This Subdivision Is In Accordance With The "Griffeth Division" Plat, As Shown On The Plat, And The Subdivision Regulations And May Be Admitted To Record.
 Planning Commission, Carroll County Date

Scale: 1" = 100 Feet
 100 50 0 100 200 300
 SCALE IN FEET

Commonwealth of Virginia Department
Of Conservation & Recreation
D.B. 780, Pg. 551
T.M. 107-A-57

Commonwealth of Virginia Department
Of Conservation & Recreation
D.B. 475, Pg. 590
P.C. 1, Sheet 255, Pg. 7

