

**Woltz & Associates, Inc.**  
23 Franklin Road  
Roanoke, VA 24011  
Phone: 800-551-3588 Fax: 540-342-3741

**A975 Lynchburg Restoration 8/8/2020-8/21/2020**

---

- 1** BITUTHENE system-4000 surface conditioner partial container, SAVOGRAN liquid TSP substitute all-purpose heavy duty cleaner partial 1 gallon container, TSP trisodium phosphate all-purpose heavy cleaner powder partial 4.5-pound container.



- 2** Sure Seal EPDM roofing systems HP/250 primer partial 1 gallon can, LOXON Sherwin Williams acrylic conditioner partial 1-gallon container.



- 3** IRWIN straight-line marking chalk (4) partial 1-gallon containers and (1) partial smaller container plus bag miscellaneous colors.



- 4** (40) General Pump industrial oil series 100 16-ounce bottles



- 5** Wolfs Head DX3-H/M automatic transmission fluid, 8 quarts plus miscellaneous other automotive oils and antifreeze

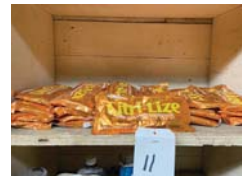


- 6** ABATRON ABOWELD 55-1 structural no sag epoxy adhesive paste (4) 1-gallon containers 2 each of part A and part B



## A975 Lynchburg Restoration 8/8/2020-8/21/2020

- 7 (9) 1-quart containers of Sun Bright Extra Strength Ammonia
- 8 (2) sets of truck side view mirrors
- 9 Service Pro EP2 lithium grease (10) 14-ounce tubes plus brake cleaning starting fluid electronic cleaner and automotive tube fuses
- 10 Professional Water Sealant PWS-5 regular strength (date 1-14-19) RTV silicone rubber penetrating breathable Etc. (3) 5-gallon containers
- 11 21 DUMOND CITRI-LIZE neutralizer and mill glaze remover (22) 8-ounce bags citric acid powder
- 12 Large submersible water pump, (2) ½-inch submersible water pumps, (110 V/AC) and miscellaneous solvents.
- 13 Miscellaneous heavy-duty paint strippers Blok-Guard and other miscellaneous solvents
- 14 Industrial maintenance coatings rust converter M82-00 Benjamin Moore (1) 1-gallon container (2) 1 Quart containers. miscellaneous other rust treating solvents.



## A975 Lynchburg Restoration 8/8/2020-8/21/2020

- 15 (2) 5-gallon containers of PROSOCO Sure KLEAN weather seal color enhancer WB color enhancing protective treatment



- 16 Miscellaneous paints



- 18 Restoration latex RL series add mixtures for cement-based mixes from Edison Coatings Inc. (4) full 1-gallon containers and (4) partially full containers.



- 19 MEECO'S red devil soot remover for oil furnaces, steam cleaners, pressure washers, diesel engines (5) 32-ounce containers plus miscellaneous caulking



- 20 SURE-KLEAN restoration cleaner concentrated carbon and pollution remover (4) 5-gallon containers.



- 21 SURE-KLEAN weather seal SILOXANE PD long lasting pre-deluded water repellent (2) 5-gallon containers



- 22 12 V pressure washer on two-wheel dolly cart.



- 23 Paint sprayer with 4 hp Honda GX 120 gas motor on cart



## A975 Lynchburg Restoration 8/8/2020-8/21/2020

- 24 (3) Rolls of 3' wide fabric mesh one 2' roll of heavy-duty plastic sleeving (Heat seal baggy) plus partial and full rolls of foil backed insulation



- 25 5-gallon can of kerosene partially full



- 26 55-gallon drum paint mixer 110 V, Pneumatic vibratory paint scraper, miscellaneous scrapers, (2) ceramic electric heaters, two floor cleaning pressure washer heads with rotating nozzles and vacuum collector



- 27 Hilti concrete nailers, tile tools, wire brushes for drills and industrial caulking gun



- 28 2-ton hydraulic jack, (2) mechanical jacks, (8) 110 V red safety lights



- 29 LEAD T-Style flashing 5/8" W x 1/2" H, 78"L (10) pieces 7/8" W x 5/8" H, 1 piece 75" L, 1 piece 37" L



- 30 Logging chain 27' and several trailer receiver hitches (pintle and ball style)



- 31 40' logging chain, (2) 1-ton chain come alongs, (1) cable come along, (3) truck tie-down ratchets, (11) Saturn 2-ton two-part 1/2" cable block



32 (2) 1/2" submersible pumps, (1) 1" submersible pump, (1) 1" water pump (110 V)



33 Antique western electric call bell



34 Digital Sony Mavica camera in heavy duty Pelican 1400 case



35 AT&T cordless phone system with base station and (4) remote units, 110 V with plug surge protector



36 30" x 60" drafting table with motorized elevation maximum height 44", minimum height 28"



37 Craftsman tool chest with hand tools, numerous end wrenches, sockets, crescent wrenches pliers, screwdrivers, etc.



38 Bosch 1364 concrete saw and case



39 FEIN FSN 400 E, 120 V, (2) vibratory plunge saws one works one does not



40 Poulan Pro PP4218A 42-cc 18" chainsaw with bar and chain oil and carrying case



41 Milwaukee heavy duty heat gun with attachments 120 V



42 Milwaukee heavy duty heat gun with attachments 120 V



43 Milwaukee heavy duty heat gun with attachments 120 V



44 Gasoline powered 1" water pump



45 MK Model 370 120 V AC, ceramic wet saw with tub and sliding bed, Serial #431167



46 Electric paint shaker, clamps are broken.



## A975 Lynchburg Restoration 8/8/2020-8/21/2020

47 Milwaukee 1/2" hammer drill with drill bits and a Milwaukee 6" circular saw and tool box



48 DRI EAZ SAHARA Microban TurboDryer, 115 V, Model E650, Serial #8776



49 (2) ENERPAC Hydraulic 75-ton two stage jack Serial #3E1A909 model #JHA75



50 Corded electric shop light, heavy duty hydraulic bottle jack and floor jack



51 Dayton 1-ton chain hoist 110 V; heavy duty



52 Jacuzzi 1" electric water pump 110 V, model #5H4106-S



53 Bosch Rotozip RZ20 multi-tool with attachments and carrying case



54 (12) pieces, (2) 18" pipe wrenches Rigid brand, (2) 14" pipe wrenches, (3) crowbars, (2) hacksaws, large channel lock pliers, bow saw and logging chain



A975 Lynchburg Restoration 8/8/2020-8/21/2020

55 Metal table



56 (2) pieces, Bosch 6" concrete saw with dust collector guard (GWS13-50VSP) and Milwaukee 1/2" electric drill 110 V



57 Heavy duty 4" shop vice with 6" throat



58 DeWalt 12" compound miter saw, type 4A, 120 V AC, serial #36889



59 Speedheater 1100 Watt, 120 V paint remover, Serial #1100-15 with broken carrying case



60 Toolbox with miscellaneous tools, stapler, Irwin quick grip, flashlight, hand pick, wire cutters, hammer, measuring tape, brushes, allen wrenches



61 AMT Surface Planer, model 4650 12"



62 Bostitch Magnesium N66C coil fed pneumatic nailer





A975 Lynchburg Restoration 8/8/2020-8/21/2020

- 63 Echo 58 V cordless leaf blower with brushless motor technology and charging station
- 64 Aluminum tool chest with tray and miscellaneous tools: gauge, wrench, drill bits, allen wrenches, copper cutters, wooden soft and hard bristle brushes plus a Red Dragon propane blow torch kit
- 65 (3) pieces- 5" angle grinder, a Bosch reciprocating saw- fine cut, heavy-duty jigsaw with adjustable angle head - adjusts laterally and rotationally
- 66 DeWalt 1/2" electric corded drill, a DeWalt 5" electric corded grinder and Stanley 1/2" electric drill plus drill bits
- 67 Hitachi framing nailer Model #NR 90AE(S1) 3 1/2" strip nailer/air nailer
- 68 (2) items- black box with DeWalt Model DW318 vs orbital jigsaw serial #66196 (has a blue tape patched cut on cord) and red box with battery clamps, saw blades etc.
- 69 DeWalt work light/power station/battery charging station for cordless tools, GFCI protected, Model #DC022



## A975 Lynchburg Restoration 8/8/2020-8/21/2020

- 70 Rockwell Jawhorse, portable saw horse with clamp model RK 9000, Serial #9121 27192, clamping force 1T, clamp range 0-37", max load 600lbs
- 71 (2) CST/Berger transit tripods, measuring stick, Berger model 200B transit and Rolatape measuring wheel
- 72 Milwaukee heavy duty 1 1/8" rotary hammer drill, corded, serial #0930700470037, 120 V, 4700BPM, RPM 0-880/min
- 73 Milwaukee heavy duty 1 1/8" rotary hammer drill, corded, serial #893B799470068, 120 V, 4700BPM, RPM 0-880/min
- 74 DeWalt DW098 1/2" drive 18 V cordless drill with battery charger
- 75 Grayco TrueCoat Pro 18 V cordless power painter
- 76 Skilsaw 5275, 7 1/4" circular saw, 120 V, with case and extra blade
- 77 Kobalt air chisel, Dayton air chisel and another air chisel – unknown - with bits and Stack-on tool box



78 Paslode framing nailer, battery/gas operated, Model: IMCT, Part #900420



79 Paslode cordless utility framing nailer with battery charger part #900420



80 Paslode cordless 16-gauge straight finish nailer part #900400 model: IM250



81 Echo SRM-266T trimmer with circular saw blade



82 Echo PAS-265 string trimmer with string trimmer head



83 Echo SRM-266T string trimmer head weed eater



84 FEIN multi-master grinder/sander



85 FEIN multi-master grinder/sander



## A975 Lynchburg Restoration 8/8/2020-8/21/2020

- 86 DeWalt DW292 1/2" electric impact wrench, 120 V, AC/DC
- 87 Hitachi G 12S A3 4.5" disc grinder with paint shaver head and extra blades, 120 V, #M1170473
- 88 Husqvarna K970 94cc, 16" chainsaw plus extra Husqvarna chain and chain drive new in box
- 89 STIHL MS170 12" chainsaw
- 90 Oregon 511A bench chain grinder for chainsaw blades
- 91 Bostitch BT200 Industrial oil-free brad nailer and box
- 92 Milwaukee heavy duty 1/2" impact wrench model #9066, cord in good condition
- 93 Partner K650 Active II, 12" concrete saw, gasoline powered, 5500 RPM



## A975 Lynchburg Restoration 8/8/2020-8/21/2020

94 Partner K40 14" pneumatic concrete saw and (2) concrete blades, max. 5400 RPM



95 (2) items- SKIL professional 3.5 horsepower angle grinder 110 V and a Bosch GWS 13-50VS 5", 120 V, angle grinder with concrete blade



96 (2) items- Pro-Tech 14" abrasive cut off saw and Bosch GWS 13-50VSP 120 V, grinder with cut off blade electric



97 Milwaukee heavy duty hammer drill 1/2" 5378-20 120 V electric, 1350/3200 RPM, 22000-52000 BPM, serial #897C70204118



98 DeWalt DW514 high performance rotary hammer drill heavy duty with box and flat head chipping bits



99 Bosch 11264EVS vibration control heavy duty SDS hammer drill, new in case



100 Bosch 11236VS heavy duty 1" SDS hammer drill 110 V



101 Chicago 1" SDS hammer drill model #41983 120 V



## A975 Lynchburg Restoration 8/8/2020-8/21/2020

102 Skilsaw 7 1/4" Worm Drive Saw model #HD77 (HG-427310)



103 Skilsaw 7 1/4" Worm Drive Saw model #HD77 (HG-501237)



104 Skilsaw 7 1/4" Worm Drive Saw model #HD77 (HG-121376)



105 (3) items- a Porter Cable model 360 HD Dustless Belt Sander, belt size: 3" x 24", and Black & Decker number 7436 vibratory palm sander 120 V AC only and Black & Decker 5.5" compact circular saw #7300, Type 1, 120 V only, 4000 RPM



106 Bosch GWS13-50VSP 5" variable speed angle grinder with lock-on paddle switch (new in box) 2800-1150 RPM



107 DeWalt heavy duty 5" angle grinder (new in box) D28115



108 (2) items- a DeWalt vibratory palm sander with dust collector model #DWE6411, and arrow PT 50 pneumatic stapler in box



109 (3) items a Craftsman 6.5" electric hand saw, a Black & Decker model #1317 1/2" reversing spade drill serial #1276 and Black & Decker 3/4" heavy duty drill serial #8220620



## A975 Lynchburg Restoration 8/8/2020-8/21/2020

- 110** Porter Cable 1/4" palm grip finishing sander model #342 and a Bosch 1640VS fine cut reciprocating saw 110 V
- 111** Quickpoint mortar gun powered by Milwaukee drill 110 V with operator's manual plus assorted mortar drive augers
- 112** Quickpoint mortar gun powered by Milwaukee drill 110 V
- 113** Quickpoint mortar gun powered by Milwaukee drill 110 V
- 114** (2) items- Stanley Bostitch staples 7700, BCS1516, Bostitch coil nails 2" x .090
- 115** DeWalt DWE6411 4" palm grip finishing sander with dust collector plus hacksaw, large C clamp, bolt cutters, tiedown/ratchet strap and 110 V ground fault power strip
- 116** Delta 10" compound miter saw 120 V model 36-220 type 2, serial #R9242
- 117** Ryobi work horse with adjustable, scaled guides



A975 Lynchburg Restoration 8/8/2020-8/21/2020

---

118 Rigid Micro CA-100 inspection camera nearly new with carrying case



119 Makita T221D cordless jigsaw



120 Hitachi air nailer model #NT65MA4



121 Bosch 11236VS rotary SDS hammer drill heavy duty 110 V



122 Porter Cable model 343 5" orbital round sander with dust collector



123 Porter Cable model 342 4" square orbital sander with dust collector



124 Porter Cable model 380 palm grip orbital sander 4"x 4" with dust collector



125 Porter Cable TigerClaw model 750 variable angle reciprocating saw



126 Porter Cable TigerClaw model 750 variable angle reciprocating saw





## A975 Lynchburg Restoration 8/8/2020-8/21/2020

- 127 Pair of Wood's Powr-Grip glass suction grippers 8" diameter
- 128 Bosch 1775E angle grinder with diamond tip masonry blade and dust collection outlet 4 1/2"
- 129 DeWalt hand power planer
- 130 Mac 1-ton hydraulics scissors auto jack
- 131 (2) Dremel Multipro model 395 type, 5 variable speed, Dremel tools one with extension plus attachments
- 132 FEIN SuperCut construction vibratory plunge saw model FSC 2.OX
- 133 FEIN SuperCut construction vibratory plunge saw model FSC 2.OX
- 134 DeWalt DC515, 18 v Cordless Vacuum with two batteries and chargers (used) plus DeWalt Hammer Drill dust collection attachments (new in box)



A975 Lynchburg Restoration 8/8/2020-8/21/2020

135 FEIN MultiMaster plunge saw model FMM350Q 110 V



136 Bosch 1/2" drive 24 v cordless hammer drill with heavy duty battery packs (Bosch tough hammer pro Brute)



137 Milwaukee 10 1/4" circular saw catalog number 6460 110V



138 Porter Cable model 324MAG 7 1/4" heavy duty circular saw 110 V



139 DeWalt 1/2" drive hammer drill and impact driver, 18 V, cordless with charger and (2) batteries



140 KOBALT hole saw kit 3/4" through 2 1/2"



141 Hole saw kit - brand unknown (new in box) 3/4" through 5" diameter



142 Porter Cable TigerClaw model 750 variable angle reciprocating saw



A975 Lynchburg Restoration 8/8/2020-8/21/2020

---

143 Black & Decker model 3105 reciprocating saw 110 V



144 Bosch Brute Tough 24 V cordless hammer drill with charger, no battery



145 KOBALT socket set with 3/8" drive ratchet and a 1/2" and 3/8" drive sockets in addition to Bostitch graphite hammer



146 Bosch Brute Tough 24 V hammer cordless hammer drill with charger, no battery



147 Porter Cable model 380 palm grip sander 4" square



148 Black & Decker LB 700 120 V leaf blower



149 General Pump T9051 paint pump with marathon 1.5 hp motor and regulator etc.



150 ATP pneumatic jackhammer



A975 Lynchburg Restoration 8/8/2020-8/21/2020

- 151 Bostitch model M3 pneumatic/manual hardwood floor nailer
- 152 Heavy duty pneumatic jackhammer
- 153 Ingersoll Rand 261 3/4" pneumatic impact wrench
- 154 TEEL 3/4" water pump with Dayton 1-hp motor 110 V
- 155 Circular tile saw approx. 4 1/2" blade, 11800 RPM
- 156 Simpson Strong-Tie EDT22S adhesive dispensing tool for epoxy caulk
- 157 7" Portable wet tile saw with ceramic cutting blade plus a glass cutter with 10" throat
- 158 (2) Jabsco drum pump motors, model #16420-0115
- 159 Kobalt air hammer with multiple attachments model #0232168, 36" pipe wrench, (2) 18" pipe wrenches, 14" pipe wrench and 18" angle valve wrench



**160** Air grinder with ceramic blade, (2) jackhammers and air hose



**161** Crowbar, (2) levels, bar clamp, 36" pipe wrench, post driver, rubber mallet and bolt cutters



**162** Solar ES 2500 12 V booster pack with jumper cables, and 1/2" drive torque wrench



**163** (2) Shop lights, pair of jumper cables and 110 V ground fault receptacle converter



**164** Liquid AC arc welder 300 amp 220 V AC single-phase, (2) welding helmets plus welding leads and oxygen/acetylene hose



**165** Hobart Handler 120 MIG welder with helmet



**166** Emglo air compressor 110 V AC



**167** Hitachi Koki Disc Grinder model #G12SA 4.5" with paint shaver attachment and dust collector #M978086



## A975 Lynchburg Restoration 8/8/2020-8/21/2020

- 168** Bosch 7 1/4" circular saw model #1658 serial #H187 282802, Black & Decker jigsaw and Bosch GWS 13-50VS (3 601 G9H 410) grinder



- 169** Quik Drive Pro drywall driver, extended auto feed screwdriving tool, model 4634 variable speed with reverse (Serial #011487 A 2025)



- 170** Hilti HDM 500 two-part caulking gun with box of epoxy mixes and composite sleeves/nozzles



- 171** Wagner PowerCaulk 740 industrial power caulking gun variable speed, cordless/rechargeable plus a KREBS 30 electric paint sprayer and miscellaneous hand tools



- 172** Pneumatic drill, pneumatic grinder, (3) sets of brick tongs, paint mixer, Milwaukee Sawzall, cordless without battery or charger and (2) sets of ear muffs



- 173** Assortment of multi-tool accessories mostly for FEIN tool, vibratory and circular blades



- 174** Assortment of turnbuckles miscellaneous size, cable turnbuckle, (13) pieces and miscellaneous cable



## A975 Lynchburg Restoration 8/8/2020-8/21/2020

- 175** (2) Pneumatic Desco air grinders with dust collector attachment, pneumatic grinder, pneumatic chisel or jackhammer, lubricator and propane regulator



- 176** (2) heavy duty pipe cutters, pipe threading tool with extra dies, gear puller, partial, drill bit set, and miscellaneous taps



- 177** (2) Dotco pneumatic grinders with miscellaneous masonry blades and tool box



- 178** 5000-pound hoist scale, two grease guns, chain, pipe puller and crowbars



- 179** 12 V hydraulic pump, miscellaneous chain saw blades and bars, electric heater and A.O. Smith electric motor



- 180** Assortment of diamond ceramic grinder blades miscellaneous sizes from 4.5" to 8" diameter (x27)



- 181** (3) Large caulking guns, miscellaneous masonry nails-some manual, some shot driven



- 182** (6) Roof jacks and other metal brackets



## A975 Lynchburg Restoration 8/8/2020-8/21/2020

- 183** Drill-Tec fasteners for roofing systems, 3" galvanized steel plates - appear to be for insulation mounting, part #4577



- 184** (2) Sets of deep well impact sockets 1/2" drive, (1) set in inches and (1) set in millimeters, auto battery tester, cylinder hone, c-clamp, framing square, tiedown strap Victor oxygen/acetylene torch and acetylene gauge, tiedown strap and sheet metal bending tool



- 185** Jackhammer chisels and drill bits for various size hex shape shanks, miscellaneous core drill bits etc.



- 186** (3) metal shelves



- 187** (4) metal shelves



- 188** (2) metal shelves



- 189** (3) 22" Luna vanity top ceramic tile pieces solid white, dust control shroud for grinder, corner roofing flashing, slate cutter, dust collection attachment





## A975 Lynchburg Restoration 8/8/2020-8/21/2020

190 Miscellaneous 3/8" SDS hammer drill bits



191 3/4" SDS hammer drill bits



192 3/8" SDS hammer drill bits



193 Abrasive and diamond circular saw blades 16" diameter to 8" diameter



194 Belt sander sanding belts



195 Chainsaw attachment for cutting slabs from logs



196 Abatron liquid wood epoxy wood consolidant 1-gallon each of part A and part B



197 Portable heater for storing caulk, paints and other materials (looks like a cooler, but has heat)



198 Stainless steel 1/4" eye bolts with locknuts and miscellaneous hole saw blades, mallet, etc.



199 Rebar cutters 6.5" Dado saw blade, handsaw, roller brush and round locking pin



200 UNTAGGED contents of the shelves ONLY in tool crib (does not include shelving) and contents on work table to the right of heating unit



201 Sears 50/15/2 amp manual battery charger, 225/125 amp engine starter with battery tester, plus a DieHard automatic battery charger/engine starter - both for 6 and 12 V batteries



202 (2) Storage lockers, 3-compartment each



203 Denso truck radiator or equipment radiator with transmission cooler (41608) model 221-0517



204 Penn State Industries dust collection system 1.5 hp, 110 V, model DC-2



205 Woodmaster Tools, Inc. model W-718 - 18" planer, serial #W1-12858



## A975 Lynchburg Restoration 8/8/2020-8/21/2020

- 206 Prosoco Sure Klean Siloxane PD, long-lasting, prediluted water repellent, deeply penetrating protective treatment weatherproofs masonry, (1) unopened 55-gallon drum



- 207 Four-wheel pneumatic tire wagon cart



- 208 (2) Clark laser hot water washing machines (parts only)



- 209 Whitco Cleaning Systems hot water cleaning machine, Honda 20 hp V twin engine



- 210 Whitco Cleaning Systems hot water cleaning machine, Honda 20 hp V twin engine



- 211 Caged water container



- 212 Whiteman Multiquip electric mortar mixer



- 213 Trailer with storage water tank and hot water cleaning machine (parts only). No title.



A975 Lynchburg Restoration 8/8/2020-8/21/2020

---

214 Portable mortar mixer electric



215 Portable mortar mixer electric



216 Portable mortar mixer electric



217 Portable mortar mixer gasoline, 8 hp Briggs & Stratton motor



218 WATER EATER model 240G-SS/waste removal evaporator – Stainless Steel components - mounted inside Homesteader 6' X 12' trailer. This system can reduce water containing HAZMAT waste removal costs by up to 97% by cooking off the water and leaving only the HAZMAT to dispose of. If you deal with water containing hazardous materials, you need to check this one out. With title. SEE PHOTOS!



219 (4) Large propane tanks



220 55-gallon drum hoist apparatus with tipping pivot to pour contents from drum



221 (8) wheelbarrows



222 (7) Scaffold lifting screw jacks



223 Miscellaneous plywood and cable (underneath front of trailer Lot 263)



224 Miscellaneous antique and newer plumbing fixtures - pedestal and wall sinks, bathtubs etc



225 (7) Stake body side/rear gates for flatbed truck



226 Pontoon boat frame on pontoons roughly 15' x 8' and (1) section of 10" PVC pipe



227 (2) Sections aluminum scaffold walking boards 2' x 20' with (1) hand rail section



228 (1) Aluminum scaffold walking board 2' x 40'



229 Galbreath self-dumping forklift trash hopper



230 Large caged water tank with valve on bottom



231 Office trailer approximately 28' x 8'. With manufacturer's statement of certificate of origin for a mobile office.



232 Heavy duty steel trash hopper on caster wheels with crane lifting hooks



233 Storage trailer 8' x 16' and contents (several bags of sand or mortar)



234 Portable wash station with fresh water and waste water tanks, pump, battery charger and 50 Micron filtration system on trailer approximately 6' x 8'



235 Crane boom section approximately 21'



236 Small two-wheel boat trailer



237 (2) Large piles of millstone



238 Terracotta parapet wall caps, (3) stacks



239 (4) Metal truck side tool boxes, miscellaneous truck wheels and car wheels



240 Utility trailer 4' x 8'



241 Miscellaneous drainage piping and pallet of Quikrete patio paver sand



242 Round and rectangular galvanized gutter downspout piping



243 Brick- antique and newer brick and cinder blocks on powerline side of driveway



245 Aluminum concrete chute and pallet stand



246 Stack of 4' x 8' plywood



## A975 Lynchburg Restoration 8/8/2020-8/21/2020

247 (4) Large water tanks



248 Farm gate 12' x 3.75'



249 (4) Shop/job heavy duty toolboxes (Jobsite, Knaack, Jobox)



250 1994 White GMC 3500 HD diesel 1-ton dump truck with 10' dump bed, 118,954 miles VIN #1GDKC34FXRJ505014. With title.



251 2005 Chevrolet 2500 HD 4WD pickup truck, extended cab and rear seat and 8' bed, 133,853 miles, VIN #1GCHK29U75E238307. With title.



252 1980 International 4WD heavy duty ladder truck #S1800 with gas V8 engine and gas Ingersoll Rand air compressor, 55,202 miles showing on odometer. With title.



253 International 4900 series DT466 dump truck with 16' bed, diesel powered, 353,820 miles VIN #1HTSDAAN3SH690394. With title.



254 Grove MZ90C 90' Manlift, 4WD, diesel engine, 4,797 hours. serial #252368





## A975 Lynchburg Restoration 8/8/2020-8/21/2020

- 255** Snorkelift ATB60 Articulating Boom Lift 60', 2WD, gasoline engine, 2,097 hours. serial #9016401090
- 256** Snorkelift ATB60 Articulating Boom Lift 60', 4WD, diesel engine, 3,482 hours. serial #981000
- 257** 1967 International 2-ton flatbed VIN #416090G227024. (Does not run). With title.
- 258** Pneumatic Tire Forklift, yellow, diesel powered, model #1200LD
- 259** Economy 5000 Scissor Lift, model #SPL40-84-4A
- 260** 1992 RSI 28' PUP storage trailer, single axle, VIN #1RZ1KA1A2N1001174, antique doors, windows, and wooden architectural salvage included with trailer. With title.
- 261** 1980 Great Dane storage trailer, approximately 45', tandem axle, VIN #105816. With title. Special pickup time for Lots 261, 268 & 275 ONLY. These lots may be picked up on Sunday, August 23 between 1:00 to 3:00 PM. See additional information under Special Pickup Instructions.



## A975 Lynchburg Restoration 8/8/2020-8/21/2020

**262** Flatbed trailer- homemade



**263** 1977 TRAILMOBILE storage trailer approximately 30', single axle VIN #P9577. With title.



**265** 1991 Chevrolet Stake Bed, Tan crew cab truck with 10' bed, 112,830 miles, VIN #1GBHR33K4MF306777. With title.



**266** 2001 Chevrolet Silverado 2500 HD, White crew-cab truck with mechanics body and ladder rack, 8' bed, 144,000 miles, VIN #1GCHC23U61F192172. With title.



**267** 2003 GMC Sierra 3/4-ton White crew-cab, mechanics body truck with ladder rack, 8' bed, automatic transmission, 130,530 miles, VIN #1GTHC23UX3F114111. With title.



**268** Bobcat skid steer loader, model 763, gas powered with 5' 7" Loader Bucket. Additional bucket and attachments sold separately. Special pickup time for Lots 261, 268 & 275 ONLY. These lots may be picked up on Sunday, August 23 between 1:00 to 3:00 PM. See additional information under Special Pickup Instructions.



**269** 1993 International 2-ton, White ladder truck with 23'8" bed, single axle, six-cylinder, diesel, manual transmission, 292,270 miles, VIN #1HTSDPNP4PH470462. With title.



## A975 Lynchburg Restoration 8/8/2020-8/21/2020

**270** Strongway 4400 LB Capacity Pallet Jack - Like New



**271** 2000 Toyota Tundra 4WD White pickup truck with extended cab and backseat, 4.7 L - V8 engine, 6' bed, automatic, 219,942 miles, VIN #5TBBT4815YS123749. With title.



**272** 1992 Ford Box Van Truck, White, 16' bed plus over the cab storage area and Waltco lift gate, 174,480 miles, VIN #1FDKE37G6NHA17193. With title.



**273** Utility trailer for the Bobcat skid steer, homemade, 6' x 11', VIN #VA174692TR. With title.



**274** Snorkelift A60 Straight Boom Lift 60', 2WD, diesel machine (Does Not Run). serial #8913321189



**275** Bobcat Lift Forks. Special pickup time for Lots 261, 268 & 275 ONLY. These lots may be picked up on Sunday, August 23 between 1:00 to 3:00 PM. See additional information under Special Pickup Instructions.



**276** Metal stair ladder on wheels



277 Bobcat 5' Loader Bucket



278 Forklift 5' 3" Blade Extensions



279 55-gallon Drum lifting apparatus for a forklift or Bobcat



280 Miscellaneous scrap metal plus 12 V power washer



281 Storage trailer and contents 8' x 18' - Contents are AERO-SOIL horticultural perlite, bags of mortar mix and Quikrete hydraulic cement



282 (3) Aluminum extension ladders 32', 24' and 16'



283 (3) Aluminum extension ladders 40', 32' and 24'



284 Miscellaneous plastic and metal mortar mixing pans



285 (5) Aluminum step ladders 14', 12', 10', 8', and 6'



286 (3) Aluminum step ladders 14', 6' and 6'



287 (3) Fiberglass ladders-14' stepladder, 16' extension ladder, and portable and collapsible 14' extension ladder



288 (3) Fiberglass ladders (2) 24' extension ladders, (1) 6' stepladder



289 (2) Ladders -48' Extension ladder and 40' extension ladder aluminum



290 Miscellaneous aluminum ladder parts and sections some good/some not



291 All terracotta parapet wall caps miscellaneous terracotta chimney flue sections decorative concrete on hill above driveway



292 Miscellaneous PVC plastic water pipe and electrical conduit and truck air compressor tank



A975 Lynchburg Restoration 8/8/2020-8/21/2020

---

**296** Grove Worldwide MZ116B 116' ManLift-2WD, 4263 hours, diesel, serial #24949



**297** 1972 Mack DM-600 6-cylinder diesel crane truck, 391,706 miles, VIN #DM685S8004. With title.



**298** Man basket on bed of crane truck



**299** International/CASE tractor with side rotary mowing attachment. model # 885 XL, serial #B650215B025349



**300** Hitachi C10RA2 10" table saw



**301** Advance Pacesetter 170HD floor buffer



**302** Craftsman 125 PSI, 1HP, (1) 4-gallon air compressor on a dolly with hose



**303** Bosch VAC 140A HEPA vacuum cleaner



A975 Lynchburg Restoration 8/8/2020-8/21/2020

---

304 Portable air compressor on dolly without hose



305 Kerosene Reddy Heater, model #R50, 4-gallon fuel tank capacity, 3.6 PSI, 50,000 BTU



306 Husqvarna 125B blower



307 Pressure washer nozzles and extensions



308 Power washer nozzles on extensions



309 (2) Floor jacks



310 (5) Submersible water pumps 110 V



311 Electrical wire on spool



312 Portable air compressor, 1.5 HP, 125PSI max, 4-gallon, model #WL504102AJ



313 Craftsman 16-gallon wet/dry vacuum cleaner, 6.0 peak H.P.175 blowing mph



314 314 Craftsman 16-gallon wet/dry vacuum cleaner, 6.0 peak H.P.175 blowing mph



315 Craftsman 16-gallon wet/dry vacuum cleaner, 6.0 peak H.P.175 blowing mph



316 One-wheel wooden wheelbarrow truck cart



317 Peel Away paint sprayer



318 MK Diamond Brick Xtreme brick cutting saw 12", serial #002768



319 Miscellaneous hoses



320 Bin of assorted rope and lifeline harnesses





321 Robin generator model #RGX2400, serial #800647



322 Specialty lighting light beam work light, metal halide, model #M59, 400W



323 (3) Michelin heavy duty truck tires, 1 Liberty smaller vehicle tire and (3) Chevy truck rims size 11R24.5 XDA2



324 Mobile vacuum system for vacuuming sawdust into a barrel



325 KEW vacuum system



326 Titan Industrial commercial heavy duty electric generator, 10HP, model #6250, 5,000 Watts, mounted on frame with wheels



327 Mobile Peel Away paint sprayer with hoses



328 Assorted safety harnesses



329 Work light stand with (3) work lights



330 Collection of (5) Strongway hydraulic floor jacks of various sizes



333 Swing stage setup (cable) with attachments, powered by two Black & Decker super duty drills, along with counter weights, beams, etc.



334 Assorted road safety equipment (cones and signs)



335 Shelf contents - automotive oils, etc.



336 Blue Blower air ventilator model BB1907 WF-2000



337 Master propane heater with variable output



338 Aloha outdoor use portable ventilator model 39012W 120 V



## A975 Lynchburg Restoration 8/8/2020-8/21/2020

339 Aloha outdoor use portable ventilator model 39012W 120 V



340 (3) 5-gallon diesel fuel cans



341 (2) 5-gallon kerosene fuel cans (blue)



342 (2) 5-gallon gasoline cans (red)



343 (1) 5-gallon kerosene can (blue), (1) 5-gallon gasoline can (red), (1) 2.5-gallon gasoline can (orange), and (2) funnels



344 Clarke Sand Blast Cabinet with a broken glass lid model #SB9006



345 Target masonry saw powered by a Honda 5.5 horsepower motor



346 ALC Sandy jet abrasive blaster model #F-100DM



## A975 Lynchburg Restoration 8/8/2020-8/21/2020

- 347 E series pressure washer by Pressure Pro model #4000, powered by Honda 13.0 H.P. motor, with hose and pressure washing wand



- 348 Water/dry vacuum system brand unknown, 120 V (vacuum with hose)



- 349 Bin of assorted hand tools



- 350 Shelf, (2) rows, shelf only no contents, left shelf legs are bent



- 351 Bin of assorted electrical extension cords



- 352 Bin of assorted rope and one-wheel pulley system



- 353 (2) large vertical propane tanks, (1) with propane heater attachment and (1) with dolly



- 354 Chevrolet Silverado (white) tailgate



A975 Lynchburg Restoration 8/8/2020-8/21/2020

---

355 Table 68" x 32" x 25"



356 Reddy-Heater 50,000 BTU



357 Master propane heater model #TC200V variable propane heater without a propane tank



358 Master propane heater model #TC200V variable propane heater without a propane tank



359 Metal safety or storage rack



360 Bin of assorted construction/drop blankets and a commercial size laundry bin



361 (4) used tires, (1) BF Goodrich rugged terrain (P265 70R16) comes with wheel, and (3) Michelin (P265 75R16) wheels not included



362 Roller conveyors - (3) pieces



A975 Lynchburg Restoration 8/8/2020-8/21/2020

---

363 Water shotgun pressure washer powered by a 13 H.P. Honda motor



364 North Star proven performance electric pressure washer model 1500EPW



365 Home power 6000 home generator powered by a Honda motor 11.0 H.P.



366 Pullman-Holt vacuum model #45, serial #R- 5669



367 Pullman-Holt vacuum model #45, serial #R- 5254



368 FEIN vacuum model #95513



369 Hosetract drum reel for water hose, no hose



370 Wisconsin Robin pump for 3" water hose, suction head 28', total head 105'



371 Schmidt manufacturing abrasive blaster model #unknown



372 WICK Manufacturing, Inc. Little Sucker vacuum to be used with water



373 M & S Systems, Inc. portable vacuum and (2) additional filters



374 Metal cabinet and contents



375 Portable emergency eye wash station



376 Clipper masonry saw without blades



377 Wooden bin with varying vacuum attachments and squeegee



378 ALC Sandy jet abrasive blaster model #F90, just drum and stand no motor nor air compressor



A975 Lynchburg Restoration 8/8/2020-8/21/2020

379 ALC Sandy jet abrasive blaster model #F90, just drum and stand only



380 Chandelier with white shades



381 Box of (1) 25-foot class 1 flexible duct



382 Box of Hayward vacuum filters PO-25-PO1E-WW-50-X, F31R 36596



383 (2) Sand blasting helmets



384 (4) Ratchet chain binders



385 Miller welder's foot control pedal model #PFC23A



386 Wooden storage rack with (4) shelves and contents, (5) small trailer tires and (1) empty metal toolbox



387 Storage rack and all contents: metal bucket, (2) lawn mower tires, heavy duty water hose, box of screws and band of twisted rope.





388 Troy walk-behind tiller, needs (2) new tires



389 (2) Plastic toolboxes and miscellaneous pipe fittings



390 (4) Propane tanks unknown amount inside



391 Master propane heater without tank, model #TC200V



392 Propane heater make and model unknown without tank



393 Master propane heater, model unknown, without hose and tank



394 Plastic bin with various mops and scrubbing brushes



395 24-gallon portable water tank on frame with wheels



396 Plastic bin containing various hand tools, rakes, shovels, sledge hammers and more



397 Plastic bin containing various hand tools, rakes, shovels, sledge hammers and more



398 Plastic bin containing various hand tools, rakes, shovels, sledge hammers and more



399 Plastic bin containing various hand tools, rakes, shovels, sledge hammers and more



400 Gardner Denver Electric air compressor - 200 PSI



401 Empty metal 55-gallon drum with removable clamp lid



402 (3) Shovels, like new, two pointed and one flat head



403 (9) Shovels of various size, flat and pointed



404 (2) Mop buckets



405 (2) 5-gallon gas cans



406 Pressure washer frame with a 5.5 hp Honda motor



407 Miscellaneous tampers and hand tools with various heads and post hole digger



408 Welders' torch cart with oxygen and acetylene hose, and Victor cutting torch



409 Dolly, water hose for a fire hydrant, pipe fitting and metal toolbox and all contents



410 (4) 4" steel C clamps



411 Heavy duty towing chain and locking trailer hitch and ball



412 Adjustable (3) ball trailer hitch



413 Set of walk through ladder attachments



414 Plastic bin with various safety harness equipment



415 Metal storage rack and all contents, various tow binding straps, tire irons and ratchet straps



416 (6) Levels of various sizes



417 Traffic safety equipment, markers, cones, detour signs, road blockers and other safety markings



418 44" x 30" Material bin on wheels



419 44" x 30" Material bin on wheels



420 (4) Bins of plastic foot pegs, (3) rolls of metal chicken wire, (1) fluorescent mini shop light



421 Large metal sign 62"x 38" and fence post



423 Industrial sized fan, does not work



424 Betamax electric hoist system in green container



426 Bryant high-efficiency heat pump outside unit (1987) model #541DJ036 non-working,



427 Pallet of 1" water hose



428 (4) used General Grabber tires and (3) used Michelin tires P265 70 R 16



429 Safety flagging- road work ahead



430 Barrel of various wooden trim pieces



431 AMK multi-surface magnet



432 (4) Dollies, (3) 18"x27" and (1) 28.5"x42" on rollers



433 Concrete blankets in various sizes



434 (2) Tow straps



435 Nautilus heater fan light model #N655X



436 Various brushes and concrete etching tools



437 Box of nails for a nail gun and strand of screws



438 Bucket with ratchet straps and clamps



439 CT Farm & Country Equipment hand sprayer and tank

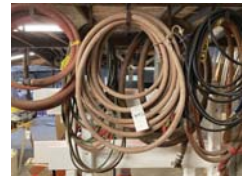


440 Utility baskets (4)



441 Spool of 5/8" nylon rope

442 Miscellaneous hoses for air, oxygen/acetylene, pressure washers, gas hose, etc.



443 Miscellaneous hose for air, etc. and electrical extension cords



446 (2) 5' x 10' sheets of a plaster board and miscellaneous LUAN board



447 Barrel with miscellaneous wood trim pieces



448 All wood standing at back of wall, long trim pieces up to 16' long



## A975 Lynchburg Restoration 8/8/2020-8/21/2020

449 Miscellaneous caulking backer rod and reinforced plastic sheeting



450 (2) Pop-up tents



451 Miscellaneous bar clamps, chain, etc.



452 Decorative wood trim (15) pieces



453 Old radio flyer 9A toy wagon, old kerosene stove, two low barstool pedestals



454 Miscellaneous water coolers (6), bleach, plastic and paper sheeting, etc.



455 Flashing, construction site light, miscellaneous floats, pumice stone and barrel of PVC pipe fittings



456 Fire extinguisher, miscellaneous paint remover, joint compound, soaker hoses and fittings, and windshield washer fluid





A975 Lynchburg Restoration 8/8/2020-8/21/2020

---

457 All items on top of 2 x 12 shelf for the full length of that upper shelf



458 Miscellaneous plastic wrap, copper sulfate, roofing nails, sand, motor oil, etc.



459 Pro RL 914P backpack sprayer and miscellaneous other sprayers



460 Squirrel cage, 110 V fan, electric wire and 20" x 20" wall air HVAC intake inlet



461 Window fan, fiberglass insulation and Coleman cooler



462 Nordyne electric heater/air handling unit model #B6BMM030K-A, serial #B6D130717737



463 Two-wheel dolly with tie down strap



464 Oxygen tank and regulator with wheels



A975 Lynchburg Restoration 8/8/2020-8/21/2020

---

465 (4) Antique metal barstools



466 Electric motor plus (9) 2" x 12" x 8' long boards



467 (3) Antique metal exterior chairs, concrete statue of child



468 Box of miscellaneous soldering tools, oil can, vice grip clamps and other tools, Reamer stainless and plastic sink and Ultracolor Plus rapid setting grout, etc.



469 Antique door parts including brass and glass knobs, locks, etc.



470 Heavy duty folding table (that lots 471, 472 and 473 are on)



471 6" x 6" Glass block, (10) pieces



472 Diamond shape wall ballast bolt washers – cast iron, approximately (23) pieces



473 Ornamental cast iron angle brackets and decorative trim



474 (2) Antique movie projectors, 1 manufactured by Excel and the other by Universal Camera Corporation



475 Cast iron decorative trim



476 Bench under lot 475, knitting rack and antique two-hole outhouse seat



477 (2) Cast iron antique bench frames



478 Cast iron and wrought iron 36" x 45" gate



479 (2) Antique signs for Veedol motor oils-greases



480 (2) Saw horses



481 (2) Saw horses with 4' x 8' sheet of OSB board



482 (2) Saw horses with 4' x 8' sheet of OSB board



483 (6) Boxes of Red Quarry tile flooring, (3) slabs of marble



484 Miscellaneous roof ice guards, sickle, bolt cutter, duck decoys, old Campbell's Soups tin container



485 (3) Decorative ceiling lights



486 Seth Thomas old wind up clock and candleholders



487 Shoe/cobbler boot holders, antique Maytag washer emblems, etc.



488 (4) Cast iron clawfoot bathtub feet



489 Old ceramic and brass lamps, lantern and ceramic dishes



490 Cast iron bakeware and kitchen items



491 (2) Brass candelabras



492 Old ironing board, wash pan, bucket, etc



493 Ariston 2.5-gallon water heater, 150psi, model GL 2.5 TI



494 4' x 8' sheets of Luan board, other boards and insulation behind it



495 Wood columns directly behind lot 494 against wall and (6) 4" x 6' columns, miscellaneous other antique trim pieces



496 (6) sheets of 5/8" OSB board



497 Stack of old doors and windows against wall



498 Stack of doors against wall



499 Stack of doors against wall, fireplace screen



500 Stack of doors against wall



501 Antique fireplace, (5) mantle's, old door glass pane



502 Blankets underneath Lot 503



503 90-degree wall mount shelf brackets (13)



504 (4) Round wooden columns, several column bases



A975 Lynchburg Restoration 8/8/2020-8/21/2020

---

505 Miscellaneous 4" x 4' turned columns (7)



506 Stack of doors against wall



507 Antique secretary desk drop leaf, glass upper cabinet with 3-drawers below, drop leaf desk with 2-drawers and storage compartments and upper part is a glass bookshelf



508 Stack of doors against wall



509 (2) Temporary expanding wall petitions



510 Pallet of Lafarge NHL 3,5 natural white lime, Chaux blanche naturelle, approximately (39) bags, each 25 kg



511 Pallet of Lafarge Chaux Blanche Crualys, approximately (24) bags, 25 kg



512 Aluminum serving dishes and wooden table under them



**513** Steel box with miscellaneous bolts, etc., can of Abatron resurfacing cement, can of window glazing, electrical conduit, and stepstool



**514** Whirlpool refrigerator/freezer model ET21GK



**515** Antique pump organ



**516** (2) Wooden Ammo Boxes



**517** RCA400 speaker box and General Electric radio



**518** (2) Mop buckets and boot brush and shoe lace container



**519** (2) Metal cabinets



**520** (4) Chevrolet hubcaps



**521** (2) Metal boxes, foot stool, and wood shoe-fitting stool





522 Box of miscellaneous cast iron items (skillets and candle holders)



523 (1) Small wooden stool and (7) paintings



524 Box of cookbooks



525 Chest of glass oil lamps and miscellaneous items



526 (2) Boxes of glass mugs/wine glasses



527 Four-Drawer wood dresser



528 Aluminum Platform



529 Miscellaneous glassware and water pitcher



530 Miscellaneous glassware, hot plate, picture frame



531 Miscellaneous glassware (candle holders, vases, wine glasses)



532 Miscellaneous glassware



533 Miscellaneous silver, brass, and ceramic items



534 Miscellaneous glassware (plates, glasses, coasters)



535 Miscellaneous glass/ceramic vases



536 Miscellaneous glassware



537 Patek Johnson Bros England "Seville" china set



538 Miscellaneous glasses and other glassware



539 Drafting table (table top not connected)



**540** Group of glass panes and mirrors. Lots 540-564 located inside Lot 261 (blue trailer) are heavy and difficult to remove.



**541** Charbroil propane grill. Lots 540-564 located inside Lot 261 (blue trailer) are heavy and difficult to remove.



**542** Antique Singer sewing machine. Lots 540-564 located inside Lot 261 (blue trailer) are heavy and difficult to remove.



**543** Golden Jet 5 boat motor. Lots 540-564 located inside Lot 261 (blue trailer) are heavy and difficult to remove.



**544** Evinrude boat motor (HP unknown). Lots 540-564 located inside Lot 261 (blue trailer) are heavy and difficult to remove.



**545** Propane tank with soldering torch. Lots 540-564 located inside Lot 261 (blue trailer) are heavy and difficult to remove.



**546** Antique Cast iron woodstove (Virginia model 102). Lots 540-564 located inside Lot 261 (blue trailer) are heavy and difficult to remove.



**547** Antique Cast iron woodstove. Lots 540-564 located inside Lot 261 (blue trailer) are heavy and difficult to remove.



A975 Lynchburg Restoration 8/8/2020-8/21/2020

---

- 548** Antique Cast iron coal stove. Lots 540-564 located inside Lot 261 (blue trailer) are heavy and difficult to remove.



- 549** Antique General Electric refrigerator. Lots 540-564 located inside Lot 261 (blue trailer) are heavy and difficult to remove.



- 550** 3 Antique Cast iron tubs. Lots 540-564 located inside Lot 261 (blue trailer) are heavy and difficult to remove.



- 551** Antique Garland Stoves cast iron stove. Lots 540-564 located inside Lot 261 (blue trailer) are heavy and difficult to remove.



- 552** Antique pump organ. Lots 540-564 located inside Lot 261 (blue trailer) are heavy and difficult to remove.



- 553** Five-Drawer wood dresser. Lots 540-564 located inside Lot 261 (blue trailer) are heavy and difficult to remove.



- 554** 32"x79" Exterior door with glass panels. Lots 540-564 located inside Lot 261 (blue trailer) are heavy and difficult to remove.



- 555** Antique Maytag ringer washer. Lots 540-564 located inside Lot 261 (blue trailer) are heavy and difficult to remove.



A975 Lynchburg Restoration 8/8/2020-8/21/2020

---

**556** Wood cabinet. Lots 540-564 located inside Lot 261 (blue trailer) are heavy and difficult to remove.



**557** Wood cabinet. Lots 540-564 located inside Lot 261 (blue trailer) are heavy and difficult to remove.



**558** Antique Maytag ringer washer. Lots 540-564 located inside Lot 261 (blue trailer) are heavy and difficult to remove.



**559** Wood balusters and antique architectural trim. Lots 540-564 located inside Lot 261 (blue trailer) are heavy and difficult to remove.



**560** Oval-top fuel/oil cabinet. Lots 540-564 located inside Lot 261 (blue trailer) are heavy and difficult to remove.



**561** Wrought iron hand railing. Lots 540-564 located inside Lot 261 (blue trailer) are heavy and difficult to remove.



**563** Cast iron cook stove, stainless tub w/stand and miscellaneous contents. Lots 540-564 located inside Lot 261 (blue trailer) are heavy and difficult to remove.



**564** Stainless tub and contents. Lots 540-564 located inside Lot 261 (blue trailer) are heavy and difficult to remove.



565 (3) Drums of OKON water repellent sealer (2 drums full, 1 partially full, all have been opened)



566 (2) Five gallon containers of Prosoco stone/tile color enhancer and soiling remover for masonry



567 (5) Five gallon containers of H40 masonry water repellent



568 (2) Pallets of various paint stripping and sealing materials (some have been opened)



569 (2) pallets of various paint stripping materials



570 (3) Drums of Sodium Hydroxide cleaner



571 Pallet of miscellaneous paints



572 Pallet of various types of paint remover



573 (2) Pallets of miscellaneous latex paint



## A975 Lynchburg Restoration 8/8/2020-8/21/2020

**600** 30" x 60" Metal desk and (2) office chairs and (2) stools



**601** Box of miscellaneous masonry and other tools



**602** Contents of upper shelf and lower table, back wall, office at top of steps



**603** 30" x 60" wooden table with lower shelf



**604** Microwave oven and contents on table



**605** Magnavox Dolby Pro Logic surround sound home audio theater system



**606** Dell OptiPlex 9020 computer tower with Dell 20" monitor APC ES750 backup power supply/surge protector, HP Office Jet Pro 8600 print/fax/scan/copy



**607** Dell OptiPlex 9020 computer tower with Dell 20" monitor APC UPS 550 backup/surge protector, HP 8610 print/fax/scan/copy



**608** (5) Standard 2 drawer file cabinets



**609** (2) Rolling office chairs



**610** Contents of desk by back office window. RT- N12 super spade router and computer cable combo



**611** Small office refrigerator



**612** Construction fleet safety compliance manual regulatory guide and OSHA compliance manual and 2018 IRC IEBC and IBC building code manuals



**613** Dell OptiPlex 9020 computer tower with APC back up UPS ES725 surge protection/back up with HP 6500A plus wireless print/fax/scan/copy, HP OfficeJet Pro 8100 printer, Dell 24" computer monitor



**614** Contents of the main office shelves



**615** 26" x 72" Wooden table with lower shelf





**616** Panasonic Bluetooth cordless phone system with main station and (4) remote stations, Phillips electronic answering machine



**617** (3) 4 drawer standard file cabinets



**618** APC back up ES 550 surge protector/battery back up



**619** (3) Standard 2 drawer file cabinets



**620** Office chair



**621** Older metal office chair



**622** 4 Drawer standard file cabinet



**623** 5 Drawer standard file cabinet



624 Contents of shelf



625 Contents of shelf



626 Contents of shelf



627 Fall protection safety information and Gerson QLFT 50 Saccharine fit test apparatus, missing parts



628 Table only, 32" x 72"



629 Battery powered Coleman lantern and a propane Coleman lantern



630 Letter stencil set and large measuring tape



631 Canon PowerShot SX 10 IS camera 10.0 mega pixels with case and box of extra stuff



632 Miscellaneous walkie-talkies, portable heater thermostat, stud finders, etc.



633 (3) Graco paint sprayer guns



634 Stack of Bankers boxes 12" x 25"



635 Stack of Bankers boxes 12" x 16"



636 Stack of Bankers boxes 9 1/2" x 24 1/2"



637 Contents on end of shelf and over door by back outside door, upstairs office



638 (3) Engine block heaters



639 37" x 25" Wood table with drawer



640 18" plan rack

