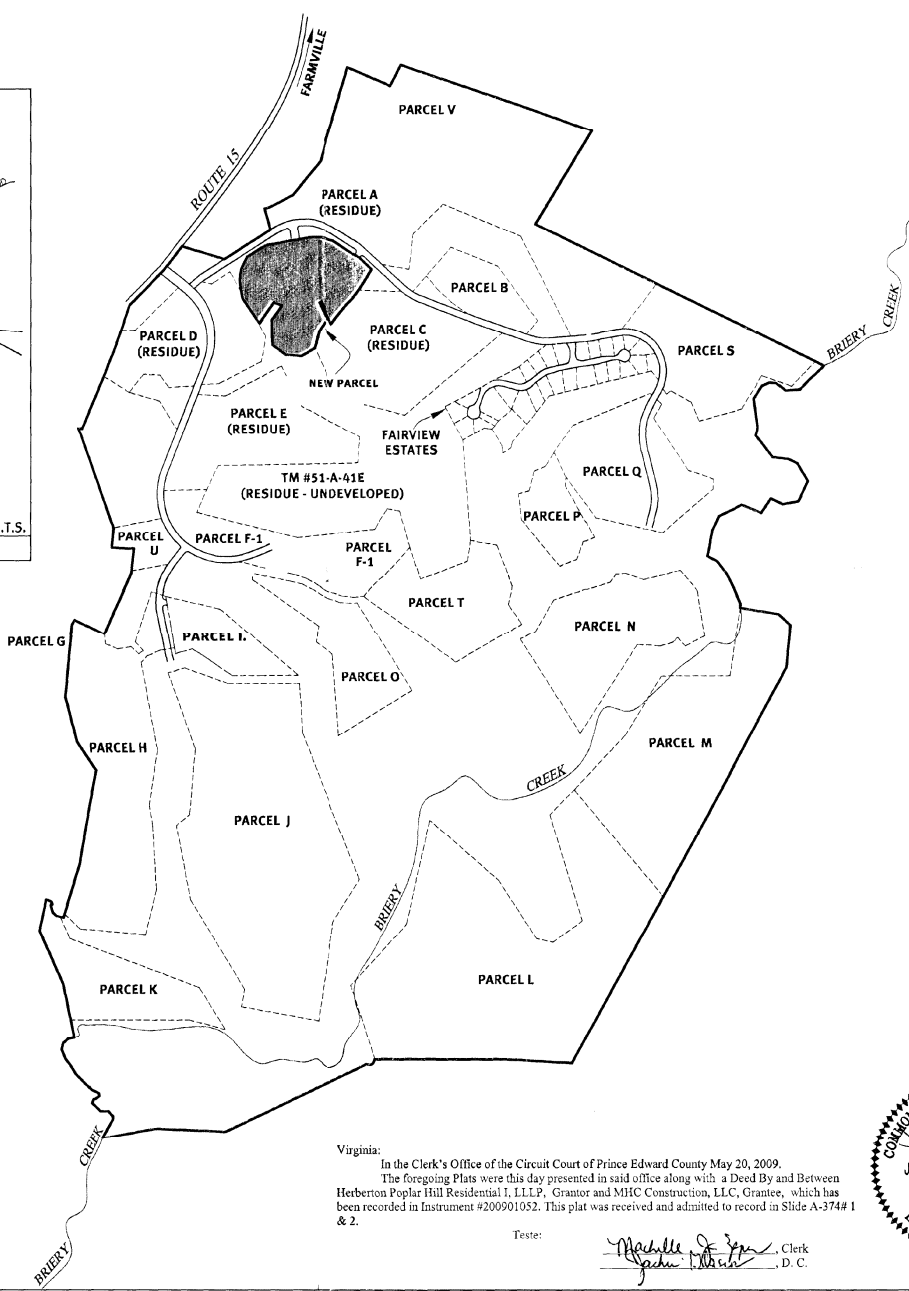
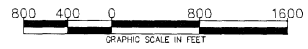
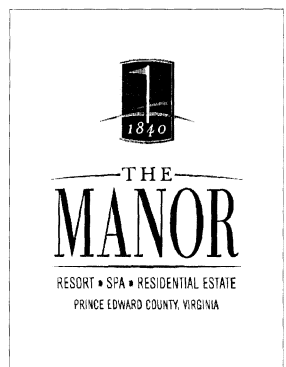
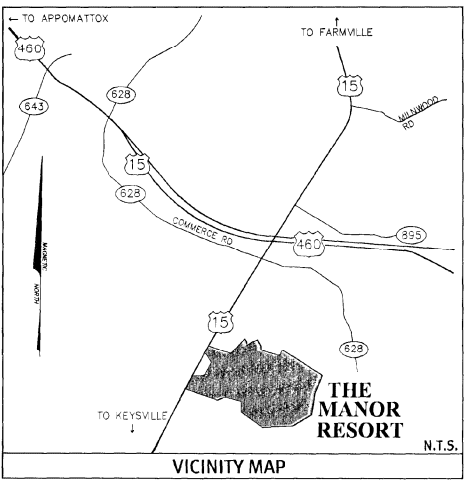


THE MANOR RESORT

NORTH
VIRGINIA STATE PLANE GRID SOUTH ZONE (14083)



Virginia:
 In the Clerk's Office of the Circuit Court of Prince Edward County May 20, 2009.
 The foregoing Plats were this day presented in said office along with a Deed By and Between
 Herberon Poplar Hill Residential I, LLLP, Grantor and MHC Construction, LLC, Grantee, which has
 been recorded in Instrument #200901052. This plat was received and admitted to record in Slide A-374# 1
 & 2.

Teste: *Michelle J. ...* Clerk
John M. ... D. C.



ENGINEERING • SURVEYING • PLANNING
HURT & PROFFITT
 INCORPORATED
 2524 LANGHORNE ROAD
 PRINCE EDWARD COUNTY, VIRGINIA
 23861-4200
 434-847-7790 MAIN
 434-847-0047 FAX

**PLAT SHOWING
 DIVISION OF THE PROPERTY OF
 HERBERTON POPLAR HILL RESIDENTIAL I, LLLP
 FARMVILLE MAGISTERIAL DISTRICT, PRINCE EDWARD COUNTY, VIRGINIA**

PROJECT NO. 20080543
 G.L. NO. 268 05 00 0
 FILE NO. SM-12640
 DATE: 8/4/08
 DRAWN BY: JAB
 CHECKED BY: JAB

HURT & PROFFITT

SHEET NO.
1 OF 2

