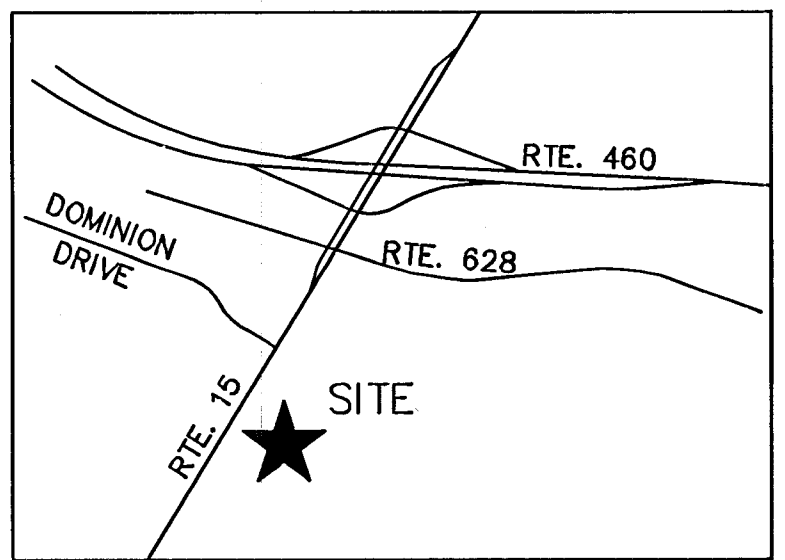


Inst# 200600654 Slide A-328#3



VICINITY MAP
1" = 2000'

Virginia:
In the Clerk's Office of the Circuit Court of Prince Edward County March 10, 2006.
The foregoing Plat was this day presented in said office along with a Deed Of Exchange by and between Poplar Hill Development Group, LLC, Grantors and Grantees, and Clyde J. Davis and Ressie A. Davis, Grantors and Grantees, which has been recorded in Instrument # 200600654. This plat was received and admitted to record in Slide A 328 # 3.
Teste:

Michelle J. Spur, Clerk
John J. White, D. C.

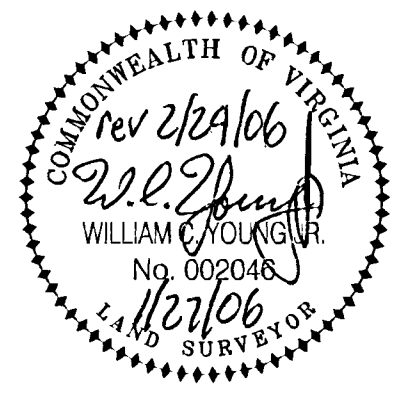
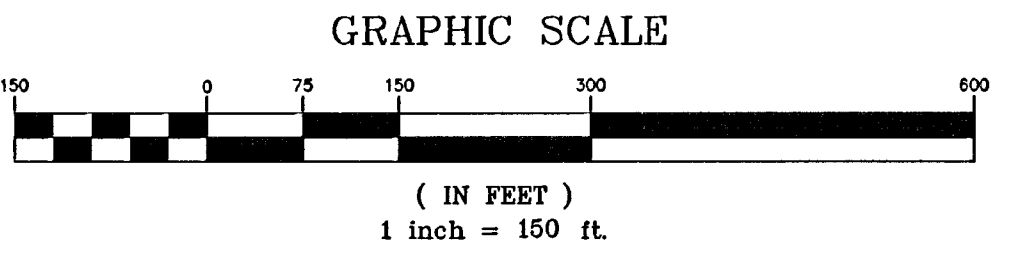
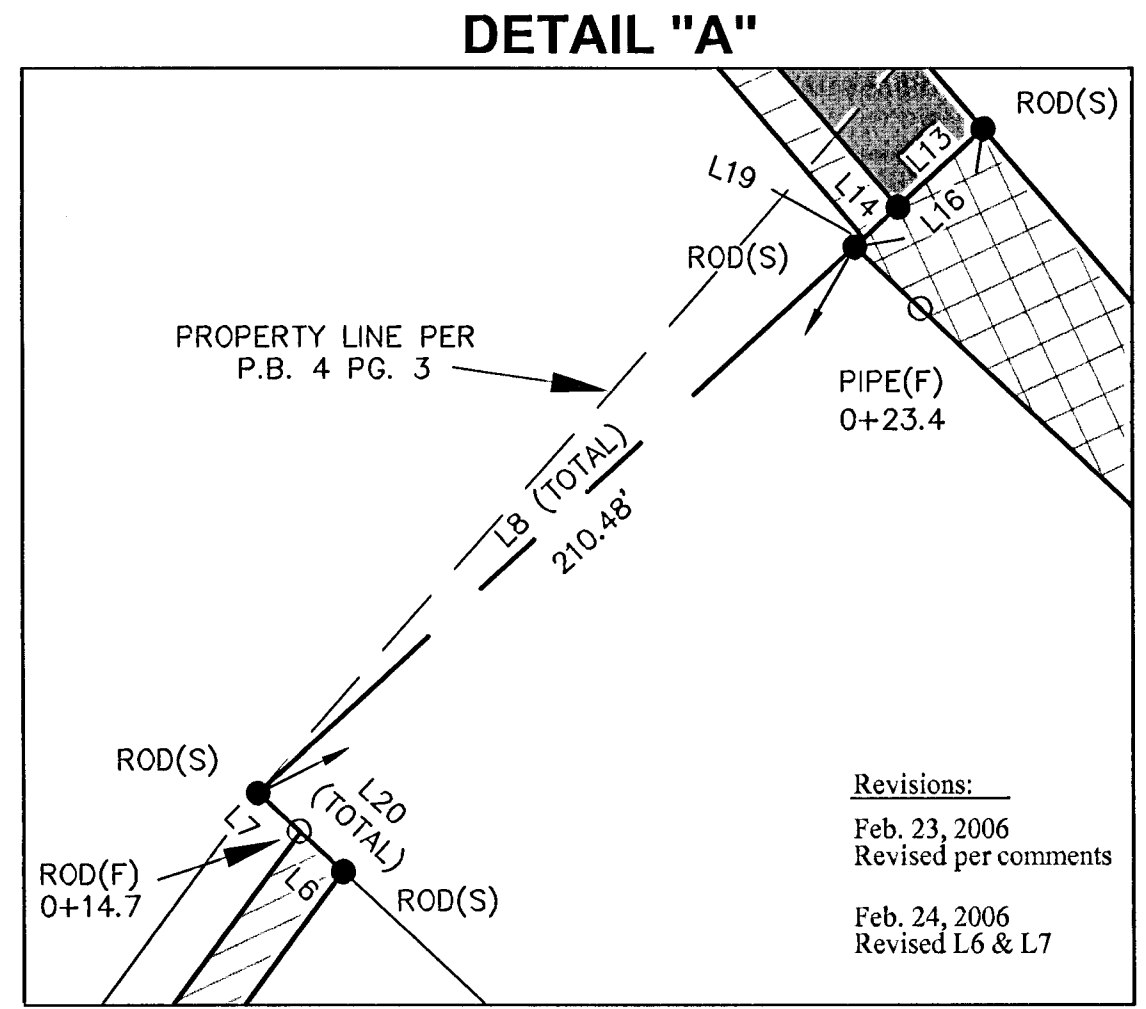
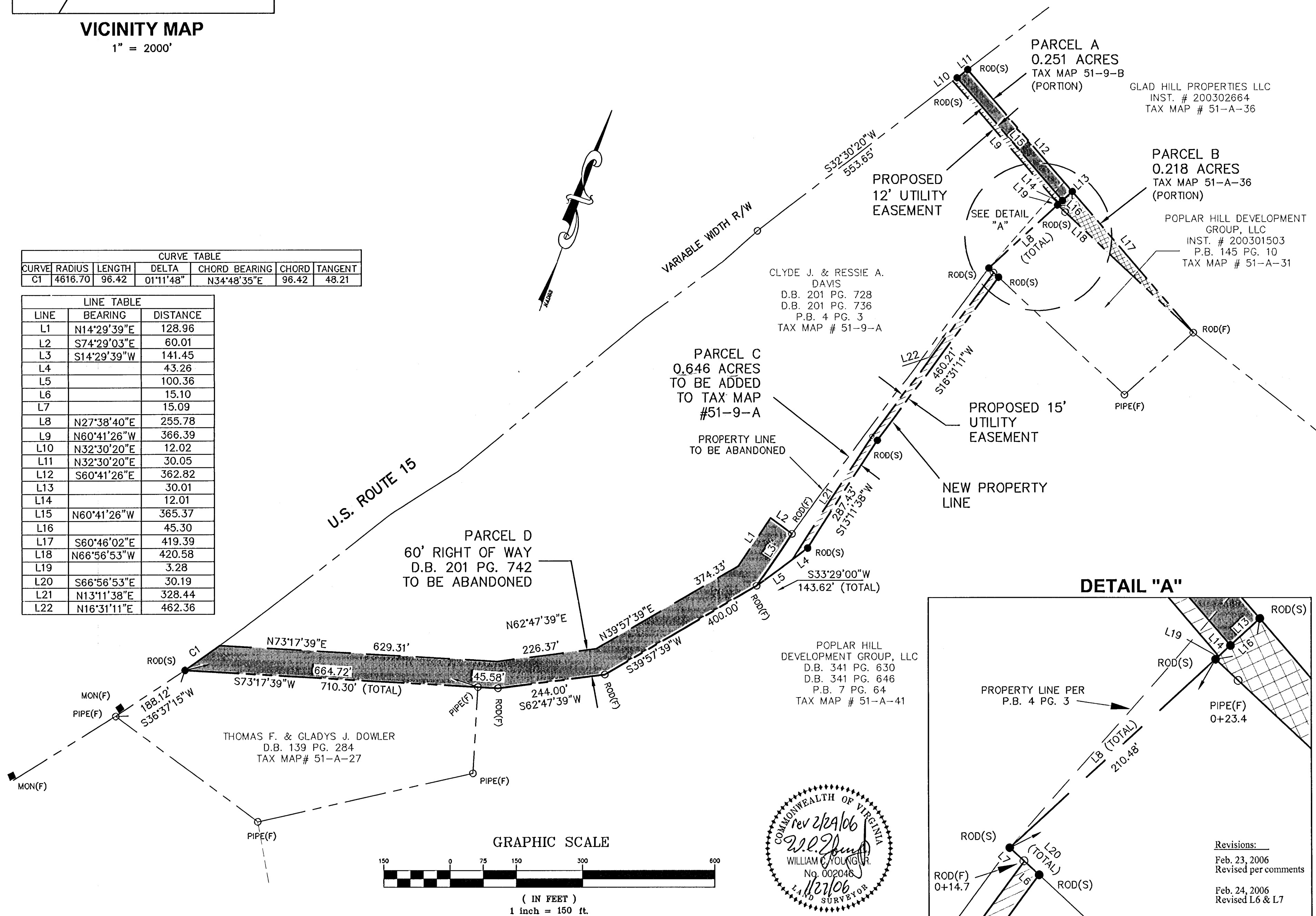
- NOTES:**
- HORIZONTAL COORDINATE SYSTEM IS BASED NAD83/93 VA. STATE PLANE, SOUTH ZONE, U.S. SURVEY FEET.
 - EXISTING EASEMENTS AND ENCUMBRANCES ARE NOT SHOWN ON THIS PLAT. TITLE REPORT NOT FURNISHED. IMPROVEMENTS NOT SHOWN.
 - PROPERTIES ON THIS PLAT HAVE BEEN COMPILED BY DEED RESEARCH CONDUCTED ON 12-19-05 BY DRAPER ADEN ASSOCIATES.
 - THIS PLAT DOES NOT REPRESENT A BOUNDARY SURVEY.

CURVE TABLE

CURVE	RADIUS	LENGTH	DELTA	CHORD BEARING	CHORD	TANGENT
C1	4616.70	96.42	01°11'48"	N34°48'35"E	96.42	48.21

LINE TABLE

LINE	BEARING	DISTANCE
L1	N14°29'39"E	128.96
L2	S74°29'03"E	60.01
L3	S14°29'39"W	141.45
L4		43.26
L5		100.36
L6		15.10
L7		15.09
L8	N27°38'40"E	255.78
L9	N60°41'26"W	366.39
L10	N32°30'20"E	12.02
L11	N32°30'20"E	30.05
L12	S60°41'26"E	362.82
L13		30.01
L14		12.01
L15	N60°41'26"W	365.37
L16		45.30
L17	S60°46'02"E	419.39
L18	N66°56'53"W	420.58
L19		3.28
L20	S66°56'53"E	30.19
L21	N13°11'38"E	328.44
L22	N16°31'11"E	462.36



Draper Aden Associates
Engineering ♦ Surveying ♦ Environmental Services

Richmond, VA
8090 Villa Park Drive
Richmond, VA 23228
804-264-2228 Fax: 804-264-8773
www.daa.com

Blacksburg, VA
Charlottesville, VA
Hampton Roads, VA

PLAT SHOWING A BOUNDARY LINE ADJUSTMENT,
4 PARCELS OF LAND BEING A PORTION OF TAX MAPS
51-9-A & 51-A-36 AND 15' & 12' UTILITY EASEMENTS

FARMVILLE DISTRICT, PRINCE EDWARD COUNTY, VA.

REVISIONS

Jan. 27, 2006	Revised New Property Line & 15' Utility Easement
Feb. 2, 2006	Revised New Property Line & 15' Utility Easement
Feb. 6, 2006	Revise New Property Line @ L21
Feb. 9, 2006	Revised Parcel B

DESIGNED BY: WCY
DRAWN BY: WCY
CHECKED BY: WCY
SCALE: 1" = 150'
DATE: JANUARY 27, 2006
PROJECT NUMBER: R99392-35S

Revisions:
Feb. 23, 2006
Revised per comments
Feb. 24, 2006
Revised L6 & L7

