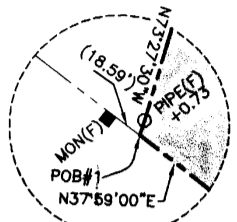


NAD83/93- VA STATE PLANE SOUTH ZONE

CURVE	RADIUS	LENGTH	DELTA	CHORD BRG.	CHORD
C1	600.00	204.18	19°29'51"	N29°35'33"E	203.19
C2	630.00	298.74	27°10'08"	N34°16'35"W	295.95
C3	630.00	257.62	23°25'46"	N08°58'38"W	255.83
C4	570.00	799.88	80°24'11"	S36°56'05"E	735.85
C5	630.00	265.67	24°09'42"	S65°03'20"E	263.71
C6	570.00	429.79	43°12'08"	S74°34'33"E	419.68
C7	630.00	412.06	37°28'31"	N71°42'45"W	404.76
C8	570.00	240.37	24°09'42"	N65°03'20"W	238.59
C9	600.00	144.42	13°47'29"	S78°59'06"W	144.07



Virginia:
 In the Clerk's Office of the Circuit Court of Prince Edward County October 8, 2004,
 The foregoing Plat was this day presented in said office along with a Deed by and between
 Poplar Hill Community Development Authority, Prince Edward County, Virginia, Et Al, Grantors, and
 Harlan L. Horton, Trustee, Et Al, Grantees, which has been recorded in Instrument # 200402608. This plat
 was received and admitted to record in Slide A-310 # 1.

Teste:
 Rebecca R. Bissan, Clerk
 William C. Young, Jr., D.C.

N/F PRINCE EDWARD COUNTY SCHOOL
 PLAT-P.B. 4 PG. 118
 TAX PCL. NO. 51-A-36B

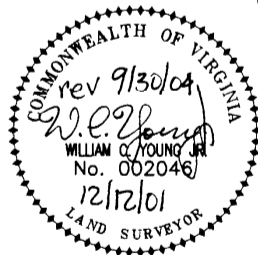
N/F KAY LACY BRINKLEY, et als
 W.B. 38 PG. 836
 PLAT-D.B. 231-294
 TAX PCL. NO. 51-A-36

N/F WILLIAM E. HARTLEY
 D.B. 209 PG. 23
 PLAT-D.B. 145 PG. 10
 TAX PCL. NO. 51-A-31

PARCEL "A"
 (DB 341 PG 647)
 POP. HILL DEV. GROUP, LLC
 TAX PCL. NO. 51-A-41
 (IN PART)

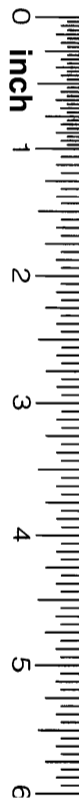
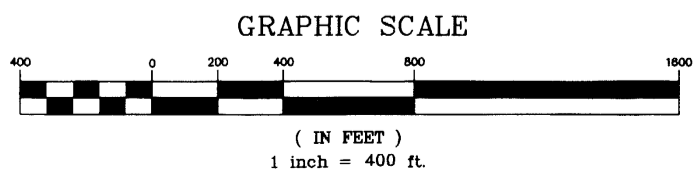
N/F CLYDE J. DAVIS
 PLAT P.B. 4 PG. 3
 TAX PCL. NO. 51-9-B

N/F THOMAS F. & GLADYS J. DOWLER
 D.B. 139 PG. 284
 PLAT-D.B. 139 PG. 285
 TAX PCL. NO. 51-A-27



- NOTES:
1. THIS PLAT IS BASED ON A FIELD BOUNDARY PERIMETER SURVEY PERFORMED IN SEPTEMBER 1999 AND RECORDED IN PLAT BOOK 7, PAGE 64.
 2. EASEMENTS SHOWN BASED ON LAWYERS TITLE INSURANCE CORP. ALTA COMMITMENT #JR53362, EFFECTIVE DATE 2/26/02.
 3. INTERIOR IMPROVEMENTS SHOWN, TAKEN FROM DIGITAL AERIAL PHOTOGRAPHY DATED SEPTEMBER 1999.
 4. LINES FROM (A) TO (B) AS SHOWN BY NELSON BOLT.

COMPILED PLAT SHOWING 435.1± ACRES OF LAND, BEING THE REMAINDER OF POPLAR HILL FARM, (PARCELS #1 AND #2), PARCEL "T" AND PARCEL "U", LOCATED IN THE FARMVILLE DISTRICT OF PRINCE EDWARD COUNTY, VIRGINIA.



N/F AMELIA S. WOMACK
 PLAT-D.B. 208 PG. 364
 TAX PCL. NO. 52-5-C

N/F POPLAR HILL VIEW SUBDIVISION
 LOT 10
 PLAT-P.B. 5 PG. 244
 TAX PCL. NO. 52-8-10

N/F MARY F. & MOSES FOSTER
 D.B. 104 PG. 325
 PLAT-D.B. 104 PG. 325
 TAX PCL. NO. 52-1-1

N/F AMELIA S. WOMACK
 PLAT-D.B. 208 PG. 364
 TAX PCL. NO. 52-5-B

N/F MARY H. & MOSES B. FOSTER
 TAX PCL. NO. 52-A-11

RESIDUAL OF POPLAR HILL FARM
 PARCEL #1
 308.7± ACRES

PARCEL "S"
 (DB 341 PG 647)
 POP. HILL DEV. GROUP, LLC
 TAX PCL. NO. 51-A-41
 (IN PART)

PARCEL "Q"
 HSC POP. HILL, LLC
 TAX PCL. NO. 51-A-Q
 (DB 341 PG 623)

PARCEL "P"
 (DB 341 PG 647)
 POP. HILL DEV. GROUP, LLC
 TAX PCL. NO. 51-A-41
 (IN PART)

PARCEL "R"
 (DB 341 PG 647)
 POP. HILL DEV. GROUP, LLC
 TAX PCL. NO. 51-A-41
 (IN PART)

PARCEL "T"
 (DB 341 PG 647)
 POP. HILL DEV. GROUP, LLC
 TAX PCL. NO. 51-A-41
 (IN PART)

PARCEL "U"
 (DB 341 PG 647)
 POP. HILL DEV. GROUP, LLC
 TAX PCL. NO. 51-A-41
 (IN PART)

POPLAR HILL COMMUNITY DEVELOPMENT AUTHORITY
 D.B. 341 PG. 661
 TAX PCL. NO. 51-A-41
 (4 PARCELS)

RESIDUAL OF POPLAR HILL FARM
 PARCEL #2
 100.839 ACRES

PARCEL "E"
 (DB 341 PG 647)
 POP. HILL DEV. GROUP, LLC
 TAX PCL. NO. 51-A-41
 (IN PART)

PARCEL "D"
 (DB 341 PG 647)
 POP. HILL DEV. GROUP, LLC
 TAX PCL. NO. 51-A-41
 (IN PART)

PARCEL "C"
 (DB 341 PG 647)
 POP. HILL DEV. GROUP, LLC
 TAX PCL. NO. 51-A-41
 (IN PART)

PARCEL "B"
 (DB 341 PG 647)
 POP. HILL DEV. GROUP, LLC
 TAX PCL. NO. 51-A-41
 (IN PART)

PARCEL "V"
 (DB 341 PG 647)
 POP. HILL DEV. GROUP, LLC
 TAX PCL. NO. 51-A-41
 (IN PART)

POP. HILL ASSOCIATES, LLC
 TAX PCL. NO. 51-A-41C
 (DB 341 PG 630)
 PARCEL "T-2"
 (IN PART)

POP. HILL ASSOCIATES, LLC
 TAX PCL. NO. 51-A-41C
 (DB 341 PG 630)
 PARCEL "T-1"
 (IN PART)

POP. HILL ASSOCIATES, LLC
 TAX PCL. NO. 51-A-41C
 (DB 341 PG 630)
 PARCEL "T-3"
 (IN PART)

N/F NELSON BOLT
 D.B. 201 PG. 740
 PLAT-P.B. 4 PG. 3
 TAX PCL. NO. 51-A-D

N/F WILLIAM K., JR. & SALLY ANN D. WHIDDEN
 D.B. 153 PG. 543
 PLAT-P.B. 4 PG. 213
 TAX PCL. NO. 51-A-42

REMAINDER OF
 TAX PCL. NO. 51-A-41

N/F NELSON BOLT
 PLAT-P.B. 4 PG. 213
 TAX PCL. NO. 51-6-1,2

N/F PAUL W. SCHEMBER, SR. et al
 PLAT-P.B. 4 PG. 213
 TAX PCL. NO. 51-6-5,6

N/F BISSSEL V. & BETTY JO ROGERS
 PLAT-P.B. 4 PG. 213
 TAX PCL. NO. 51-6-3

N/F BOLLIVY
 PLAT-P.B. 4 PG. 213
 TAX PCL. NO. 51-6-4

N/F FAIRFAX QUARRIES INC.
 D.B. 148 PG. 01 5
 PLAT-D.B. 148 PG. 01 5
 TAX PCL. NO. 52-A-2

N/F FAIRFAX QUARRIES INC.
 D.B. 153 PG. 337
 PLAT-P.B. 153 PG. 340
 TAX PCL. NO. 51-A-40

Draper Aden Associates
 CONSULTING ENGINEERS/SURVEYORS
 8090 VILLA PARK DRIVE
 RICHMOND, VIRGINIA 23228

REVISIONS: 2/26/02 CEMETERY, BEARINGS 3-28-02 TEL. MARKERS, ESMTS 4-10-02 POB'S C11, PARCEL "O" 8-23-04 VARIOUS PARCEL CHANGES	DATE: 12/12/01 DRAWN: E/JF CHECKED: WCY	SCALE: 1" = 400' PROJECT No. P-R99392-22
--	---	---

Virginia: In the Clerk's Office of the Circuit Court of Prince Edward County October 8, 2004. The foregoing Plat was this day presented in said office along with a Deed by and between Poplar Hill Community Development Authority, Prince Edward County, Virginia, Et Al, Grantors, and Harlan L. Horton, Trustee, Et Al, Grantees, which has been recorded in Instrument # 200402608. This plat was received and admitted to record in Slide A 310 # 2

Inst # 200402608 Slide A-310#2

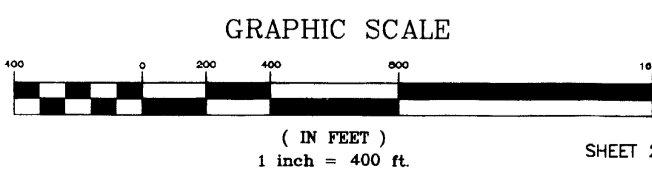
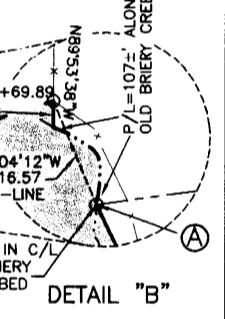
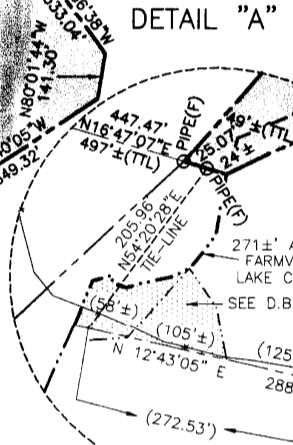
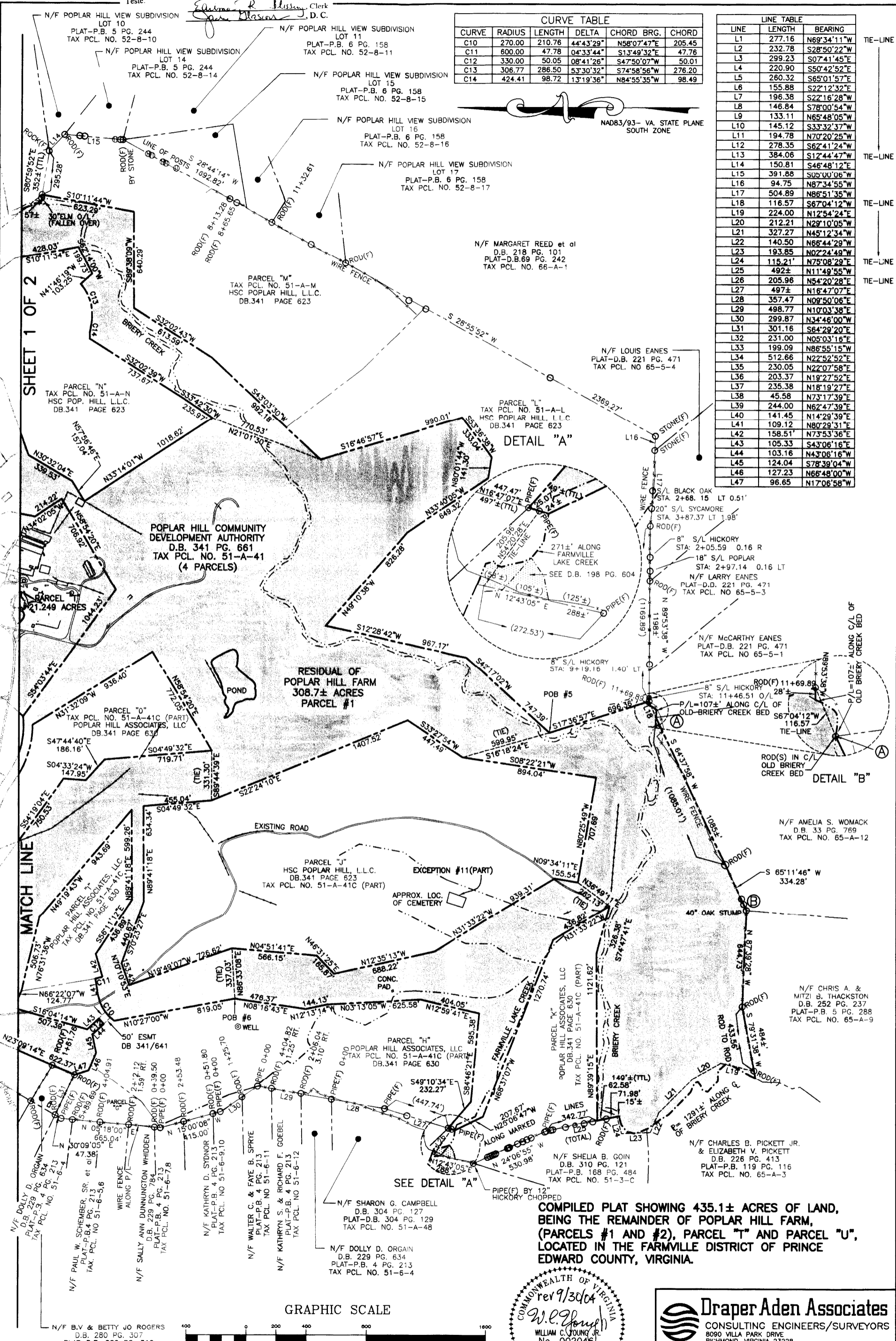
Teste:

Edwina R. Bliss, Clerk
Spencer Bliss, D. C.

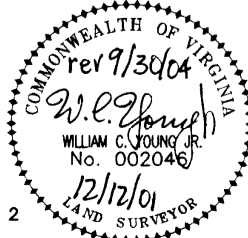
CURVE	RADIUS	LENGTH	DELTA	CHORD BRG.	CHORD
C10	270.00	210.76	44°43'29"	N58°07'47"E	205.45
C11	600.00	47.78	0°43'44"	S13°49'32"E	47.76
C12	330.00	50.05	08°41'26"	S47°50'07"W	50.01
C13	306.77	286.50	53°30'32"	S74°58'56"W	276.20
C14	424.41	98.72	13°19'36"	N84°55'35"W	98.49

LINE	LENGTH	BEARING
L1	277.16	N69°34'11"W
L2	232.78	S28°50'22"W
L3	299.23	S07°41'45"E
L4	220.90	S50°42'52"E
L5	260.32	S65°01'57"E
L6	155.88	S22°12'32"E
L7	196.38	S22°16'28"W
L8	146.84	S78°00'54"W
L9	133.11	N65°48'05"W
L10	145.12	S33°32'37"W
L11	194.78	N70°20'25"W
L12	278.35	S62°41'24"W
L13	384.06	S12°44'47"W
L14	150.81	S46°48'12"E
L15	391.88	S05°00'06"W
L16	94.75	N87°34'55"W
L17	504.89	N86°51'35"W
L18	116.57	S67°04'12"W
L19	224.00	N12°54'24"E
L20	212.21	N29°10'05"W
L21	327.27	N45°12'34"W
L22	140.50	N66°44'29"W
L23	193.85	N02°24'49"W
L24	115.21	N75°08'29"E
L25	492.4	N11°49'55"W
L26	205.96	N54°20'28"E
L27	497.4	N16°47'07"E
L28	357.47	N08°50'06"E
L29	498.77	N10°03'38"E
L30	299.87	N34°46'00"W
L31	301.16	S64°29'20"E
L32	231.00	N05°03'16"E
L33	199.09	N86°55'15"W
L34	512.66	N22°52'52"E
L35	230.05	N22°07'58"E
L36	203.37	N18°27'52"E
L37	235.38	N18°19'27"E
L38	45.58	N73°17'39"E
L39	244.00	N62°47'39"E
L40	141.45	N14°29'39"E
L41	109.12	N80°29'31"E
L42	158.51	N73°53'36"E
L43	105.33	S43°06'16"E
L44	103.16	N43°06'16"W
L45	124.04	S78°39'04"W
L46	127.23	N66°48'00"W
L47	96.65	N17°06'58"W

TIE-LINE
TIE-LINE
TIE-LINE
TIE-LINE
TIE-LINE
TIE-LINE



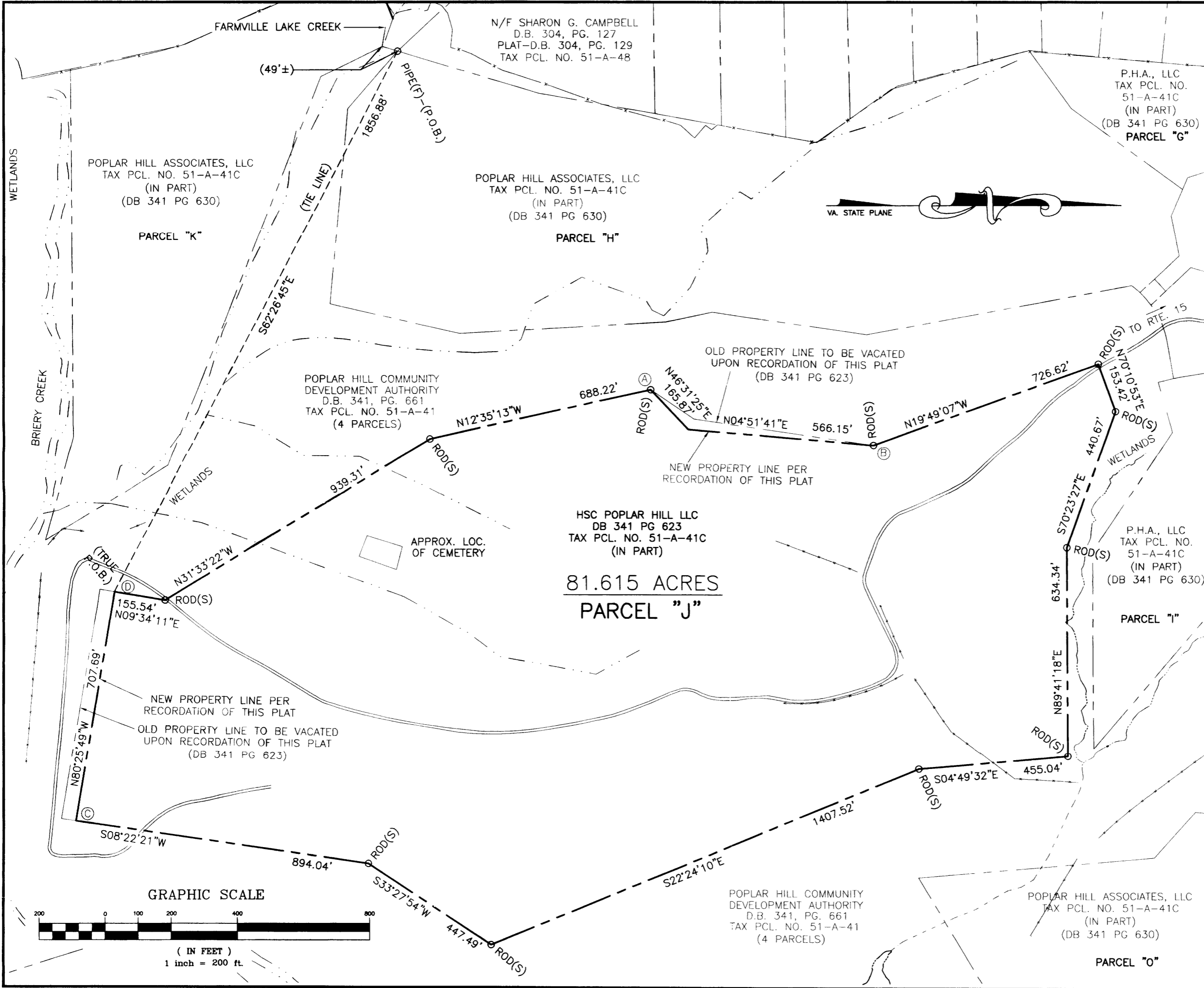
COMPILED PLAT SHOWING 435.1± ACRES OF LAND, BEING THE REMAINDER OF POPLAR HILL FARM, (PARCELS #1 AND #2), PARCEL "T" AND PARCEL "U", LOCATED IN THE FARMVILLE DISTRICT OF PRINCE EDWARD COUNTY, VIRGINIA.



Draper Aden Associates
CONSULTING ENGINEERS/SURVEYORS
8050 VILLA PARK DRIVE
RICHMOND, VIRGINIA 23228

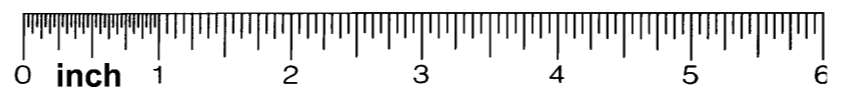
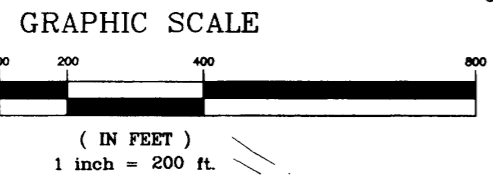
REVISIONS: 4/9/02 TITLE EXCEPTION 8/23/04 VARIOUS PARCEL CHANGES 9/30/04 VARIOUS LABEL CHANGES	DATE: 12/12/01 DRAWN: EJF CHECKED: WCY	SCALE: 1" = 400' PROJECT No. P-R99392-22
---	--	---

Virginia
In the Clerk's Office of the Circuit Court of Prince Edward County October 8, 2004
The foregoing Plat was this day presented in and office along with a Deed by and between
Poplar Hill Community Development Authority, Prince Edward County, Virginia Et Al, Grantees, and
Harlan I. Horton, Trustee Et Al, Grantors, which has been recorded in Instrument # 200402608. This Plat
was received and admitted to record in Slide A 310#3
Telle
Catherine B. Blasing
D.C. Clerk



COMPILED PLAT SHOWING THE RECONFIGURATION OF PARCEL "J", AN 81.615 ACRE DIVISION OF LAND LOCATED IN THE FARMVILLE DISTRICT OF PRINCE EDWARD COUNTY, VIRGINIA.

- NOTES:
- 1. THIS SURVEY IS BASED ON A FIELD SURVEY PERFORMED IN SEPTEMBER, 1999.
 - 2. TITLE REPORT NOT FURNISHED.
 - 3. NEW PARCEL LINES FROM A TO B AND FROM C TO D.



Draper Aden Associates
CONSULTING ENGINEERS/SURVEYORS
8090 VILLA PARK DRIVE
RICHMOND, VIRGINIA 23228

REVISIONS: 9/30/04 VARIOUS LABEL CHANGES	DATE: 08/27/04 DRAWN: EJF	SCALE: 1" = 200' CHECKED: WCY
---	------------------------------	----------------------------------

PROJECT No. P-R99392-02

Virginia:
 In the Clerk's Office of the Circuit Court of Prince Edward County, October 8, 2004.
 The foregoing Plat was this day presented in said office along with a Deed by and between
 Poplar Hill Community Development Authority, Prince Edward County, Virginia, Et Al, Grantors, and
 Harlan L. Horton, Trustee, Et Al, Grantees, which has been recorded in Instrument # 200402608. This plat
 was received and admitted to record in Slide A 310 # 4.
 Teste:
William C. Young, D.C.
 Clerk

HSC POPLAR HILL, LLC
 DB 341 PG 623
 TAX PCL. NO. 51-A-M

PARCEL "M"

POPLAR HILL COMMUNITY
 DEVELOPMENT AUTHORITY
 D.B. 341, PG. 661
 TAX PCL. NO. 51-A-41
 (4 PARCELS)

HSC POPLAR HILL, LLC
 DB 341 PG 623
 TAX PCL. NO. 51-A-L

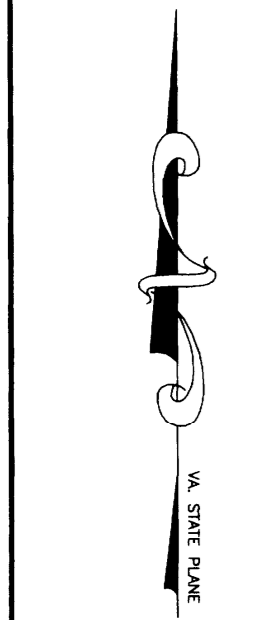
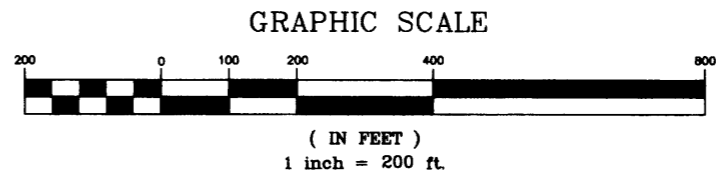
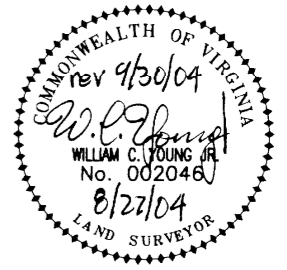
87.729 ACRES
 PARCEL "L"

N/F MARGARET REED et al
 D.B. 218 PG. 101
 PLAT-D.B. 69, PG. 242
 TAX PCL. NO. 66-A-1

COMPILED PLAT SHOWING THE
 RECONFIGURATION OF PARCEL "L",
 AN 87.729 ACRE DIVISION
 OF LAND LOCATED IN THE
 FARMVILLE DISTRICT OF
 PRINCE EDWARD COUNTY, VIRGINIA.

NOTES:

1. THIS SURVEY IS BASED ON A FIELD SURVEY PERFORMED IN SEPTEMBER, 1999.
2. TITLE REPORT NOT FURNISHED.
3. NEW PARCEL LINES FROM A TO B.



POPLAR HILL COMMUNITY
 DEVELOPMENT AUTHORITY
 D.B. 341, PG. 661
 TAX PCL. NO. 51-A-41
 (4 PARCELS)

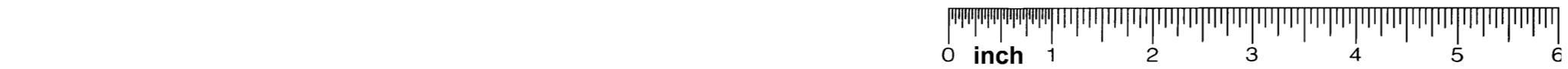
TO RTE. 15

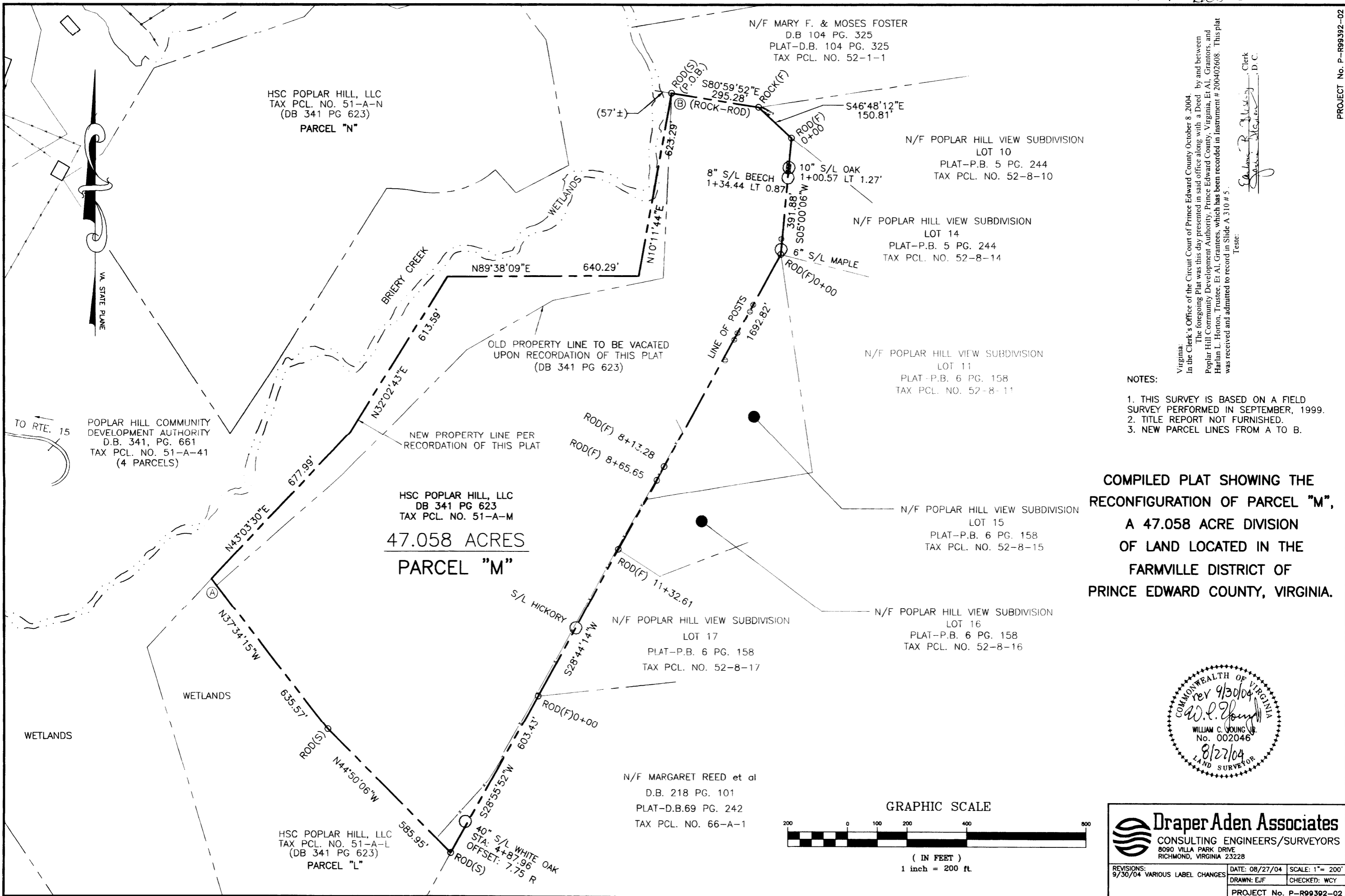
N/F McCARTHY EANES
 PLAT-D.B. 221, PG. 471
 TAX PCL. NO 65-5-1

N/F LARRY EANES
 PLAT-D.B. 221, PG. 471
 TAX PCL. NO 65-5-3

N/F LOUIS EANES
 PLAT-D.B. 221, PG. 471
 TAX PCL. NO 65-5-4

N87°34'55"W
 94.75'





N/F MARY F. & MOSES FOSTER
 D.B. 104 PG. 325
 PLAT-D.B. 104 PG. 325
 TAX PCL. NO. 52-1-1

N/F POPLAR HILL VIEW SUBDIVISION
 LOT 10
 PLAT-P.B. 5 PG. 244
 TAX PCL. NO. 52-8-10

N/F POPLAR HILL VIEW SUBDIVISION
 LOT 14
 PLAT-P.B. 5 PG. 244
 TAX PCL. NO. 52-8-14

N/F POPLAR HILL VIEW SUBDIVISION
 LOT 11
 PLAT-P.B. 6 PG. 158
 TAX PCL. NO. 52-8-11

N/F POPLAR HILL VIEW SUBDIVISION
 LOT 15
 PLAT-P.B. 6 PG. 158
 TAX PCL. NO. 52-8-15

N/F POPLAR HILL VIEW SUBDIVISION
 LOT 16
 PLAT-P.B. 6 PG. 158
 TAX PCL. NO. 52-8-16

N/F MARGARET REED et al
 D.B. 218 PG. 101
 PLAT-D.B.69 PG. 242
 TAX PCL. NO. 66-A-1

HSC POPLAR HILL, LLC
 TAX PCL. NO. 51-A-N
 (DB 341 PG 623)
 PARCEL "N"

POPLAR HILL COMMUNITY
 DEVELOPMENT AUTHORITY
 D.B. 341, PG. 661
 TAX PCL. NO. 51-A-41
 (4 PARCELS)

HSC POPLAR HILL, LLC
 DB 341 PG 623
 TAX PCL. NO. 51-A-M
 47.058 ACRES
 PARCEL "M"

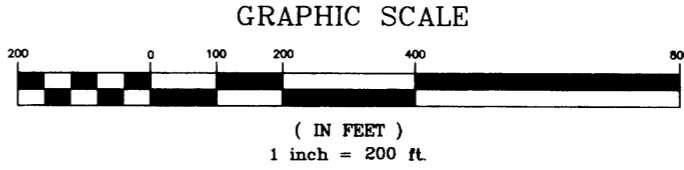
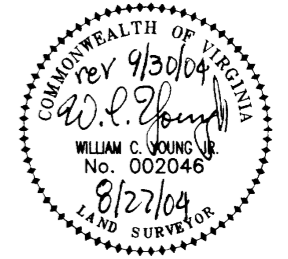
HSC POPLAR HILL, LLC
 TAX PCL. NO. 51-A-L
 (DB 341 PG 623)
 PARCEL "L"

Virginia:
 In the Clerk's Office of the Circuit Court of Prince Edward County, October 8, 2004.
 The foregoing Plat was this day presented in said office along with a Deed by and between
 Poplar Hill Community Development Authority, Prince Edward County, Virginia, Et Al, Grantors, and
 Harlan L. Horton, Trustee, Et Al, Grantees, which has been recorded in Instrument # 200402608. This plat
 was received and admitted to record in Slide A 310 # 5.
 Teste:

William C. Young
 Clerk
 D.C.

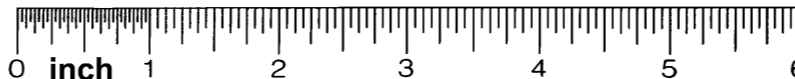
- NOTES:
1. THIS SURVEY IS BASED ON A FIELD SURVEY PERFORMED IN SEPTEMBER, 1999.
 2. TITLE REPORT NOT FURNISHED.
 3. NEW PARCEL LINES FROM A TO B.

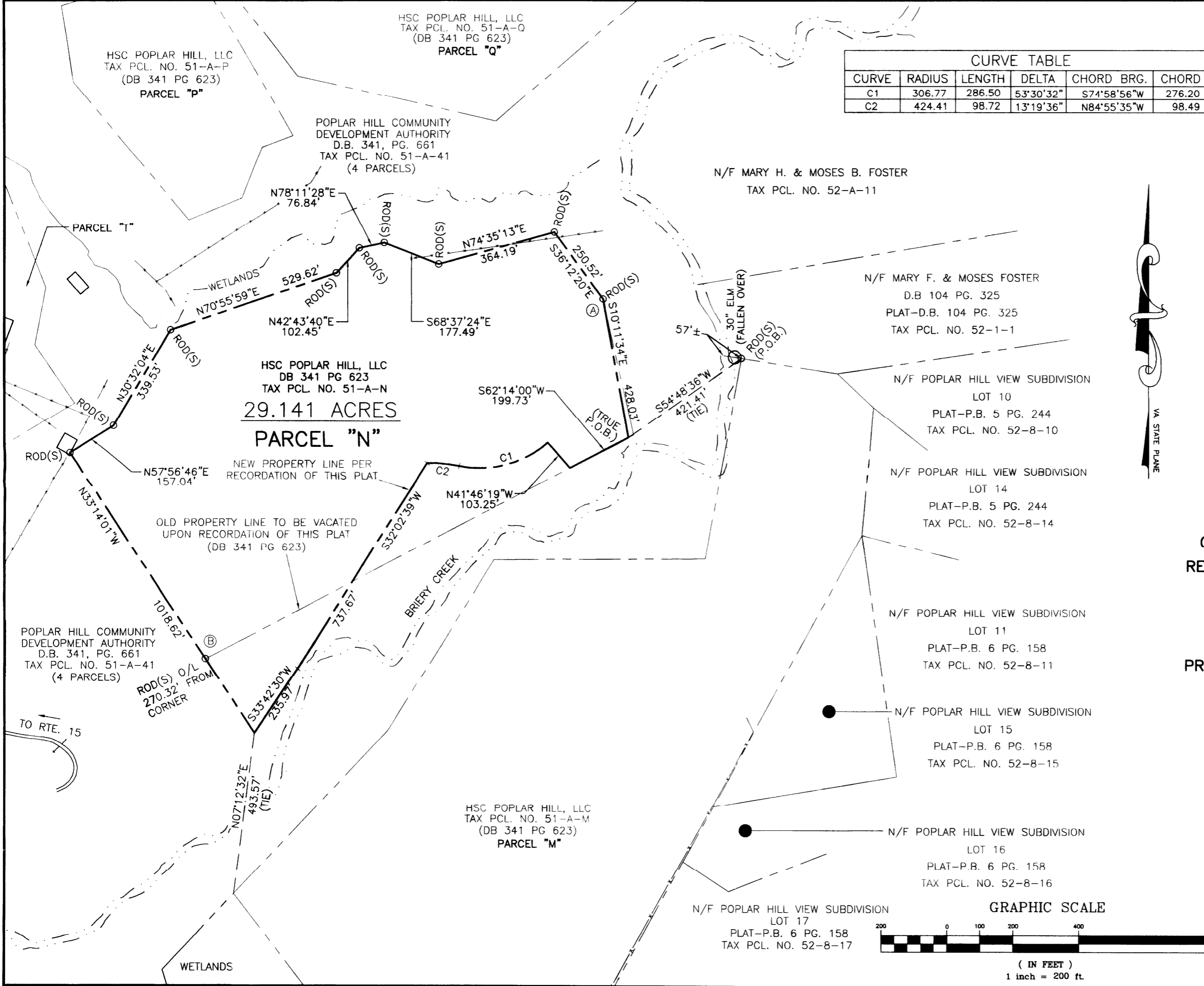
COMPILED PLAT SHOWING THE RECONFIGURATION OF PARCEL "M", A 47.058 ACRE DIVISION OF LAND LOCATED IN THE FARMVILLE DISTRICT OF PRINCE EDWARD COUNTY, VIRGINIA.



Draper Aden Associates
 CONSULTING ENGINEERS/SURVEYORS
 8090 VILLA PARK DRIVE
 RICHMOND, VIRGINIA 23228

REVISIONS: 9/30/04 VARIOUS LABEL CHANGES	DATE: 08/27/04	SCALE: 1"= 200'
DRAWN: EJF	CHECKED: WCY	
PROJECT No. P-R99392-02		





CURVE TABLE					
CURVE	RADIUS	LENGTH	DELTA	CHORD BRG.	CHORD
C1	306.77	286.50	53°30'32"	S74°58'56"W	276.20
C2	424.41	98.72	13°19'36"	N84°55'35"W	98.49

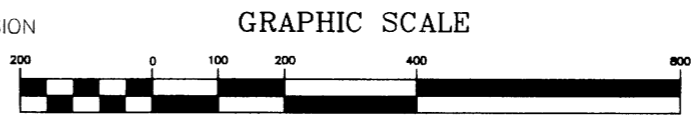


Virginia: In the Clerk's Office of the Circuit Court of Prince Edward County October 8, 2004.
 The foregoing Plat was this day presented in said office along with a Deed by and between Poplar Hill Community Development Authority, Prince Edward County, Virginia, Et Al, Grantors, and Harlan L. Horton, Trustee, Et Al, Grantees, which has been recorded in Instrument # 200402608. This plat was received and admitted to record in Slide A 311 #1.
 Teste:
Carlton R. Blasing Clerk
 D. C.

NOTES:

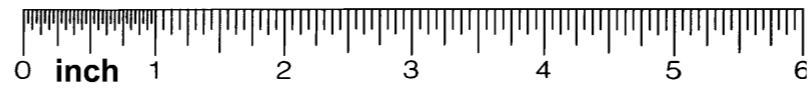
1. THIS SURVEY IS BASED ON A FIELD SURVEY PERFORMED IN SEPTEMBER, 1999.
2. TITLE REPORT NOT FURNISHED.
3. NEW PARCEL LINES FROM A TO B.

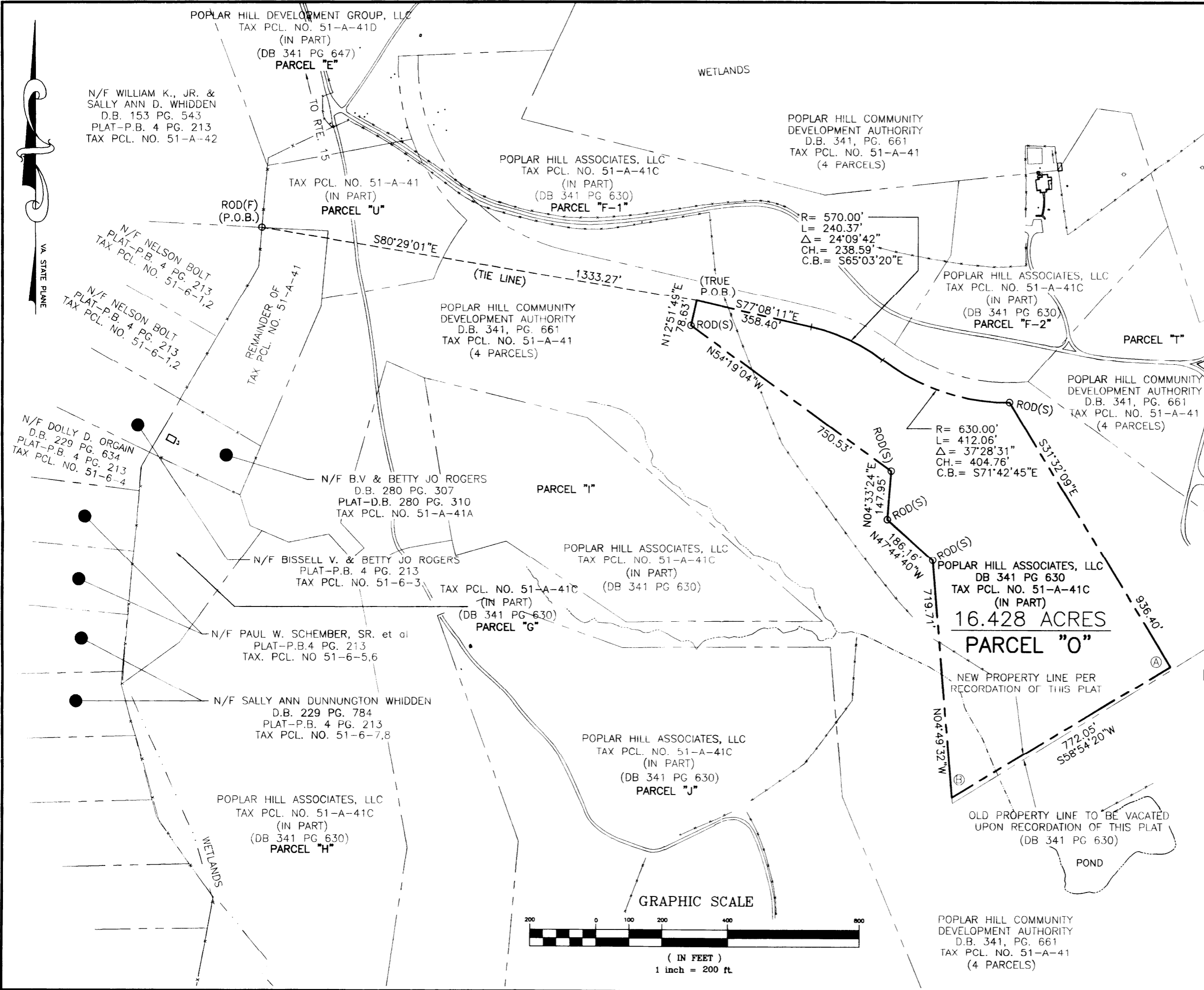
COMPILED PLAT SHOWING THE RECONFIGURATION OF PARCEL "N", A 29.141 ACRE DIVISION OF LAND LOCATED IN THE FARMVILLE DISTRICT OF PRINCE EDWARD COUNTY, VIRGINIA.



Draper Aden Associates
 CONSULTING ENGINEERS/SURVEYORS
 8090 VILLA PARK DRIVE
 RICHMOND, VIRGINIA 23228

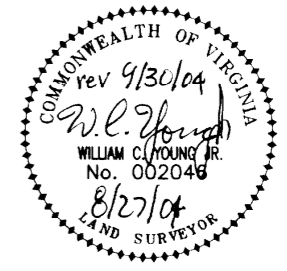
REVISIONS:	DATE: 08/27/04	SCALE: 1" = 200'
	DRAWN: EJF	CHECKED: WCY
	PROJECT No. P-R99392-02	





- NOTES:
1. THIS SURVEY IS BASED ON A FIELD SURVEY PERFORMED IN SEPTEMBER, 1999.
 2. TITLE REPORT NOT FURNISHED.
 3. NEW PARCEL LINES FROM A TO B.

COMPILED PLAT SHOWING THE RECONFIGURATION OF PARCEL "O", A 16.428 ACRE DIVISION OF LAND LOCATED IN THE FARMVILLE DISTRICT OF PRINCE EDWARD COUNTY, VIRGINIA.



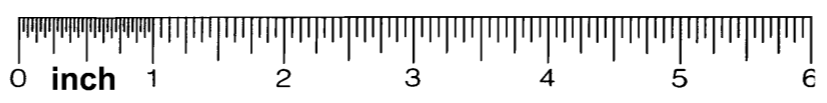
Draper Aden Associates
 CONSULTING ENGINEERS/SURVEYORS
 8090 VILLA PARK DRIVE
 RICHMOND, VIRGINIA 23228

REVISIONS: 9/30/04 VARIOUS LABEL CHANGES	DATE: 08/27/04	SCALE: 1" = 200'
	DRAWN: EJJ	CHECKED: WCY
PROJECT No. P-R99392-02		

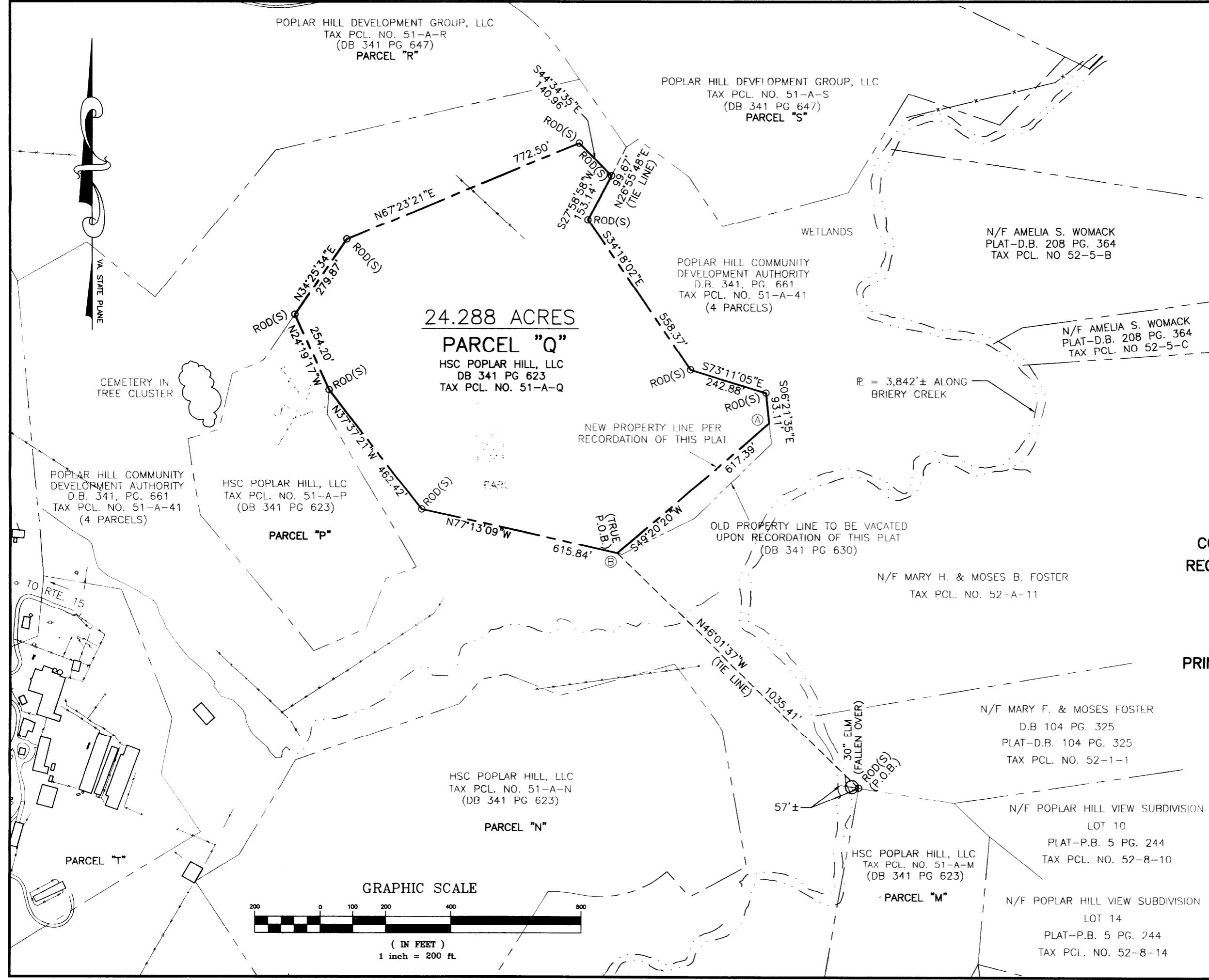
Virginia:
 In the Clerk's Office of the Circuit Court of Prince Edward County October 8, 2004.
 The foregoing Plat was this day presented in said office along with a Deed by and between Poplar Hill Community Development Authority, Prince Edward County, Virginia, Et Al, Grantors, and Harlan L. Horton, Trustee, Et Al, Grantees, which has been recorded in Instrument # 200402608. This plat was received and admitted to record in Slide A 311 # 2.

Teste:
Caroline R. Blasing, Clerk
John Stewart, D.C.

PROJECT No. P-R99392-02

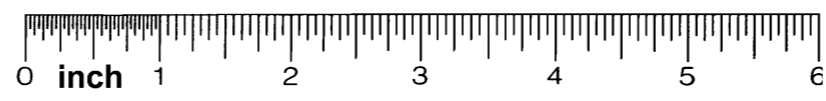
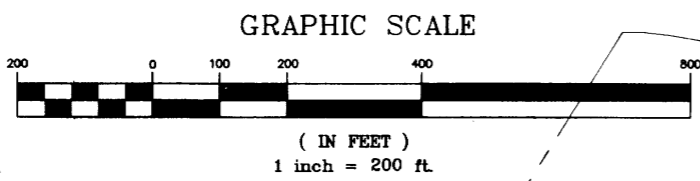
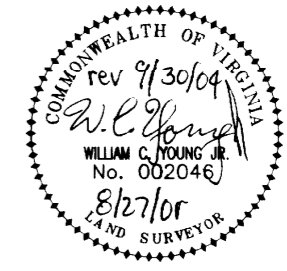


Virginia:
 In the Clerk's Office of the Circuit Court of Prince Edward County October 8, 2004
 The foregoing Plat was this day presented in said office along with a Deed by and between
 Poplar Hill Community Development Authority, Prince Edward County, Virginia, Et Al, Grantors, and
 Harlan L. Horton, Trustee, Et Al, Grantees, which has been recorded in Instrument # 200402608. This plat
 was received and admitted to record in Slide A 311 # 3.
 Teste:
 Catherine P. M...
 Clerk
 D.C.



- NOTES:
1. THIS SURVEY IS BASED ON A FIELD SURVEY PERFORMED IN SEPTEMBER, 1999.
 2. TITLE REPORT NOT FURNISHED.
 3. NEW PARCEL LINES FROM A TO B.

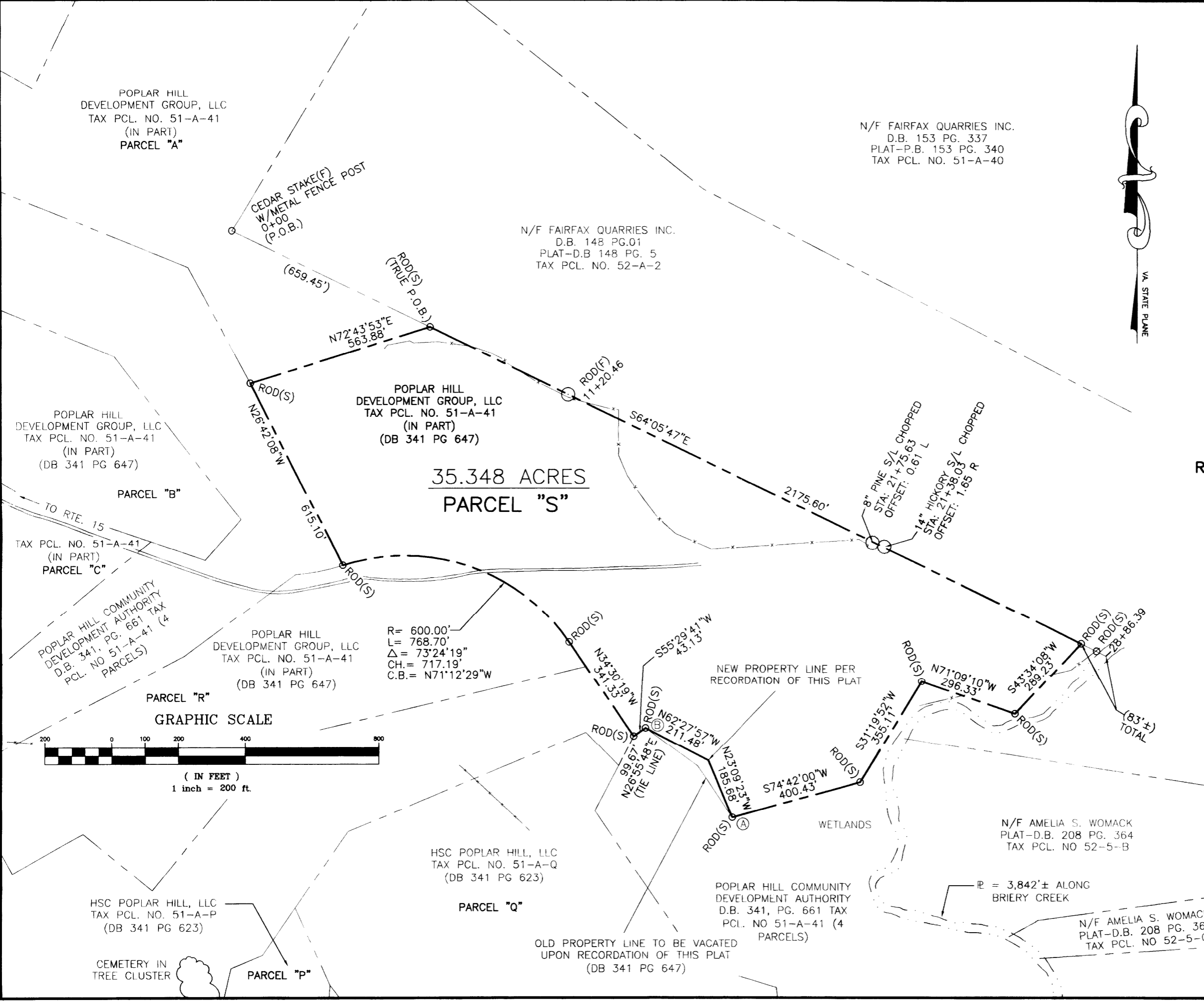
COMPILED PLAT SHOWING THE RECONFIGURATION OF "PARCEL Q" A 24.288 ACRE DIVISION OF LAND LOCATED IN THE FARMVILLE DISTRICT OF PRINCE EDWARD COUNTY, VIRGINIA.



Draper Aden Associates
 CONSULTING ENGINEERS/SURVEYORS
 8090 VILLA PARK DRIVE
 RICHMOND, VIRGINIA 23228

REVISIONS: 9/30/04 VARIOUS LABEL CHANGES	DATE: 08/27/04	SCALE: 1" = 200'
	DRAWN: EJJ	CHECKED: WCY
PROJECT No. P-R99392-02		

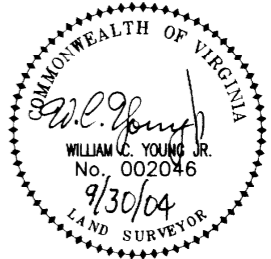
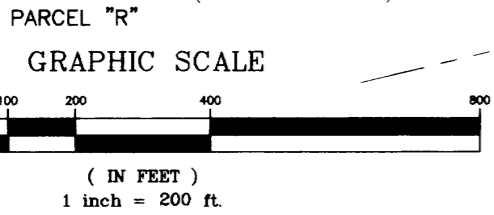
Virginia:
 In the Clerk's Office of the Circuit Court of Prince Edward County, October 8, 2004, by and between
 The foregoing Plat was this day presented in said office along with a Deed
 Poplar Hill Community Development Authority, Prince Edward County, Virginia, Et Al, Grantors, and
 Harlan L. Horton, Trustee, Et Al, Grantees, which has been recorded in Instrument # 200402608. This plat
 was received and admitted to record in Slide A 311 # 4
 Teste:
 William C. Young Jr., D.C.
 Land Surveyor



COMPILED PLAT SHOWING THE RECONFIGURATION OF PARCEL "S", BEING A 35.348 ACRE DIVISION OF LAND LOCATED IN THE FARMVILLE DISTRICT OF PRINCE EDWARD COUNTY, VIRGINIA.

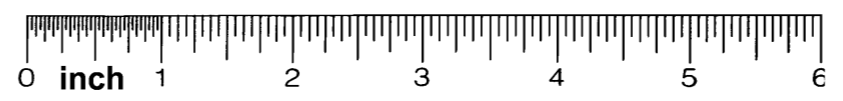
- NOTES:
 1. THIS SURVEY IS BASED ON A CURRENT FIELD SURVEY PERFORMED IN SEPTEMBER 1999.
 2. TITLE REPORT NOT FURNISHED.
 3. NEW PARCEL LINES FROM A TO B.

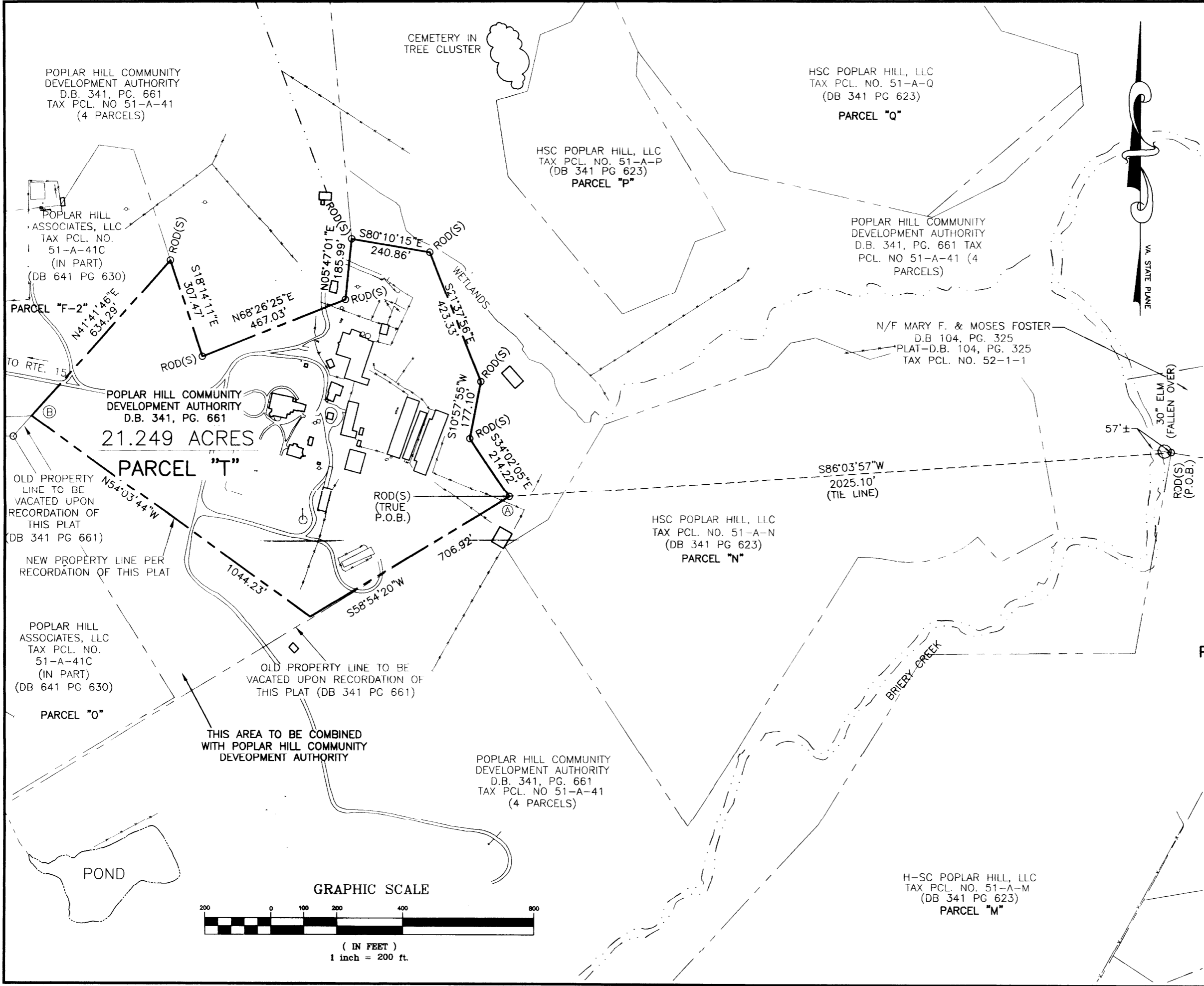
R= 600.00'
 L= 768.70'
 $\Delta = 73^{\circ}24'19''$
 CH.= 717.19'
 C.B.= N71°12'29"W



Draper Aden Associates
 CONSULTING ENGINEERS/SURVEYORS
 8090 VILLA PARK DRIVE
 RICHMOND, VIRGINIA 23228

REVISIONS:	DATE: 9/30/04	SCALE: 1"= 200'
	DRAWN: E/JF	CHECKED:
PROJECT No. P-R99392-02		

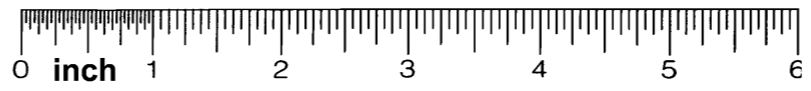
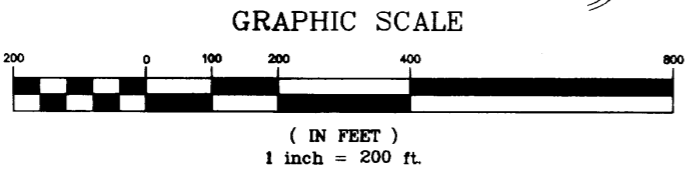
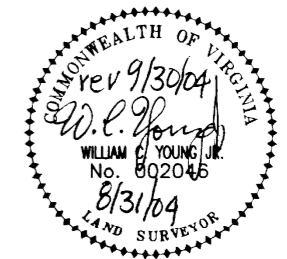




Virginia:
 In the Clerk's Office of the Circuit Court of Prince Edward County October 8, 2004.
 The foregoing Plat was this day presented in said office along with a Deed by and between
 Poplar Hill Community Development Authority, Prince Edward County, Virginia, Et Al, Grantors, and
 Harlan L. Horton, Trustee, Et Al, Grantees, which has been recorded in Instrument # 200402608. This plat
 was received and admitted to record in Slide A-311 # 5.
 Teste:
Editha R. DeStefano, Clerk
 Prince Edward County, D.C.

- NOTES:
1. THIS SURVEY IS BASED ON A FIELD SURVEY PERFORMED IN SEPTEMBER, 1999.
 2. TITLE REPORT NOT FURNISHED.
 3. NEW PARCEL LINES FROM A TO B.

COMPILED PLAT SHOWING THE RECONFIGURATION OF PARCEL "T" BEING A 21.249 ACRE DIVISION OF LAND LOCATED IN THE FARMVILLE DISTRICT OF PRINCE EDWARD COUNTY, VIRGINIA.



Draper Aden Associates
 CONSULTING ENGINEERS/SURVEYORS
 8090 VILLA PARK DRIVE
 RICHMOND, VIRGINIA 23228

REVISIONS: 9/30/04 VARIOUS LABEL CHANGES	DATE: 08/31/04 DRAWN: EJJ	SCALE: 1" = 200' CHECKED: WCY
PROJECT No. P-R99392-02		

PROJECT No. P-R99392-02