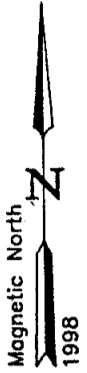


**Line Table:**

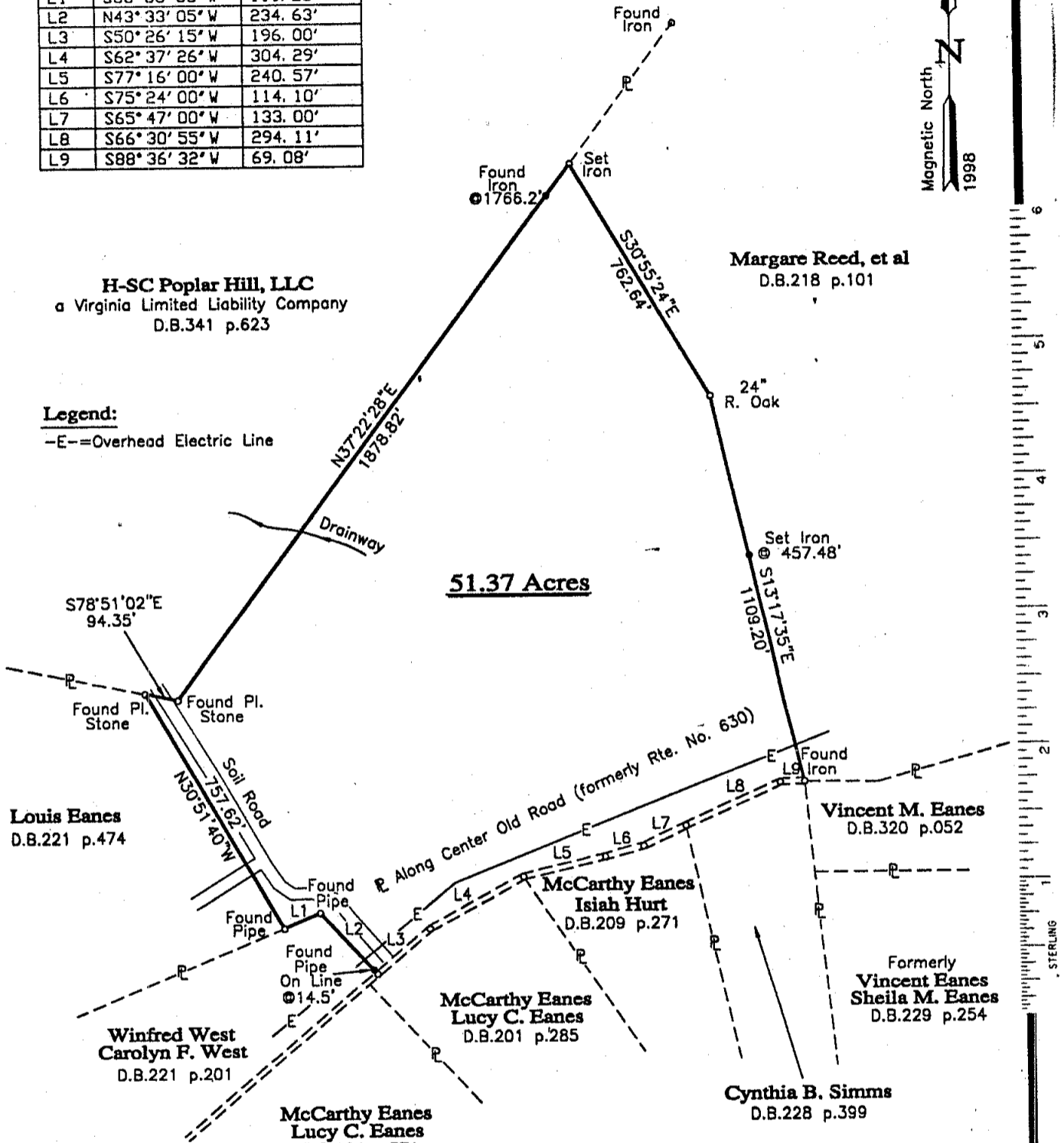
LINE	BEARING	DISTANCE
L1	S68°05'03"W	111.28'
L2	N43°33'05"W	234.63'
L3	S50°26'15"W	196.00'
L4	S62°37'26"W	304.29'
L5	S77°16'00"W	240.57'
L6	S75°24'00"W	114.10'
L7	S65°47'00"W	133.00'
L8	S66°30'55"W	294.11'
L9	S88°36'32"W	69.08'



**H-SC Poplar Hill, LLC**  
a Virginia Limited Liability Company  
D.B.341 p.623

**Legend:**

-E--Overhead Electric Line



**51.37 Acres**

**Louis Eanes**  
D.B.221 p.474

**Winfred West  
Carolyn F. West**  
D.B.221 p.201

**McCarthy Eanes  
Lucy C. Eanes**  
D.B.164 p.371

**McCarthy Eanes  
Lucy C. Eanes**  
D.B.201 p.285

**McCarthy Eanes  
Isiah Hurt**  
D.B.209 p.271

**Vincent M. Eanes**  
D.B.320 p.052

**Formerly  
Vincent Eanes  
Sheila M. Eanes**  
D.B.229 p.254

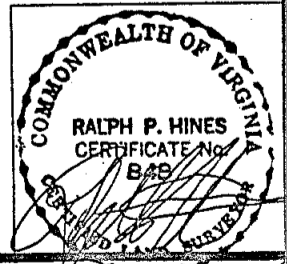
**Cynthia B. Simms**  
D.B.228 p.399

**Notes:**

1. Tax Map No. 65-A-16.
2. This plat has been prepared without benefit of a title report and therefore does not necessarily indicate all encumbrances on the property.
3. This plat agrees with found plats, deed descriptions, ground evidence, and local witnesses as near as possible.

**Boundary Survey  
for  
Estate of Willie Trent**

D.B.105 p.441  
Hampden District Prince Edward County Virginia  
Scale: 1in.=300ft.  
Comm. No. 00S0285 F.B.905-37  
October 24, 2000



**Maxey-Hines & Associates, P.C.**  
Land Surveyors • Engineers • Planners • Consultants  
P.O. Box 90 • Farmville • Virginia • 23901 • Tel:804-392-8827