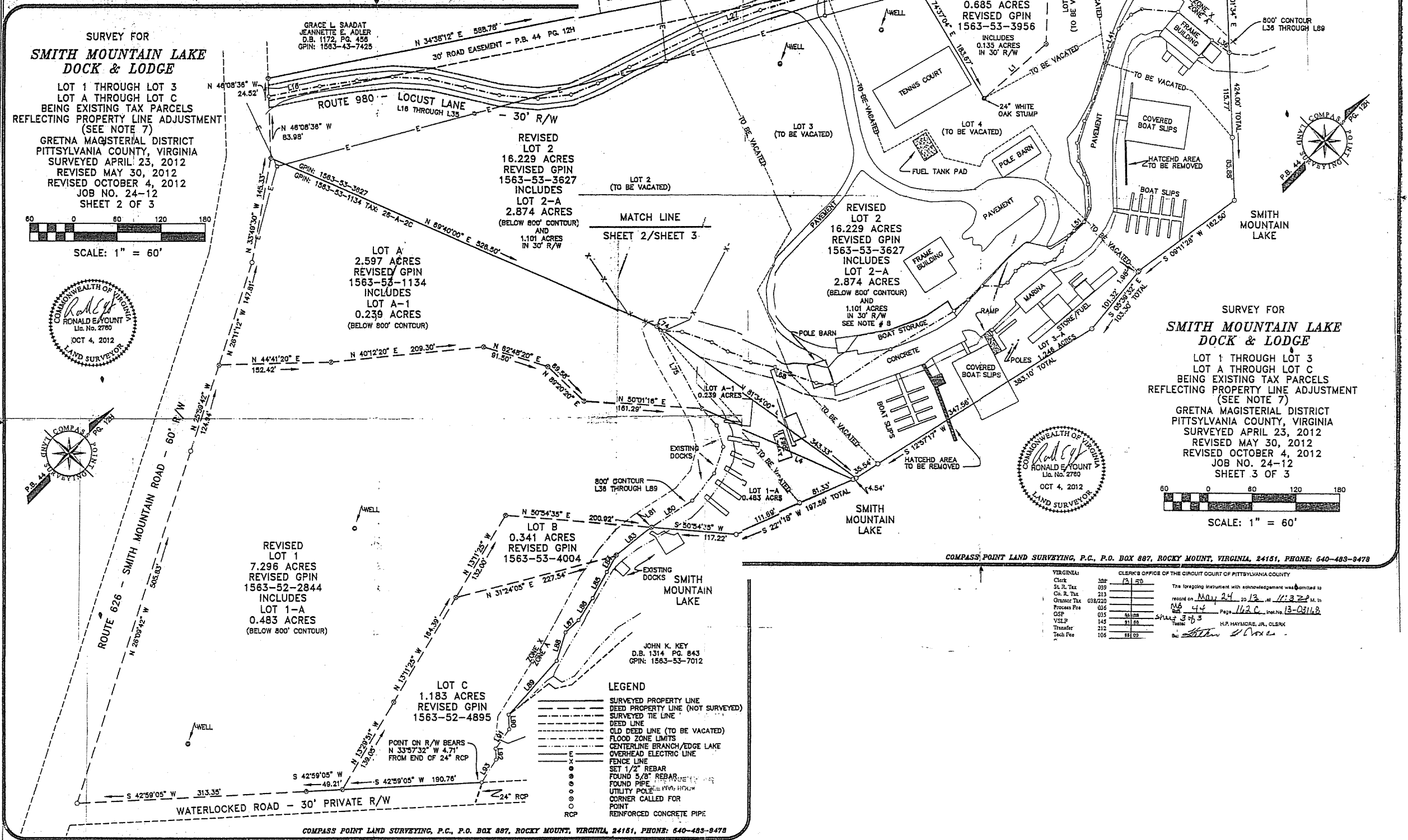
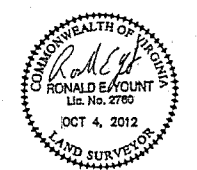
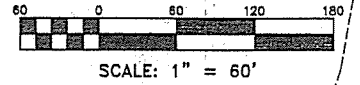


**SURVEY FOR
SMITH MOUNTAIN LAKE
DOCK & LODGE**

LOT 1 THROUGH LOT 3
LOT A THROUGH LOT C
BEING EXISTING TAX PARCELS
REFLECTING PROPERTY LINE ADJUSTMENT
(SEE NOTE 7)

GRETNA MAGISTERIAL DISTRICT
PITTSYLVANIA COUNTY, VIRGINIA
SURVEYED APRIL 23, 2012
REVISED MAY 30, 2012
REVISED OCTOBER 4, 2012
JOB NO. 24-12
SHEET 2 OF 3



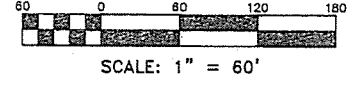
- LEGEND**
- SURVEYED PROPERTY LINE
 - - - DEED PROPERTY LINE (NOT SURVEYED)
 - SURVEYED TIE LINE
 - DEED LINE
 - - - OLD DEED LINE (TO BE VACATED)
 - - - FLOOD ZONE LIMITS
 - - - CENTERLINE BRANCH/EDGE LAKE
 - - - OVERHEAD ELECTRIC LINE
 - - - FENCE LINE
 - - - SET 1/2" REBAR
 - - - FOUND 5/8" REBAR
 - - - FOUND PIPE
 - - - UTILITY POLE
 - - - CORNER CALLED FOR POINT
 - - - REINFORCED CONCRETE PIPE

- LEGEND**
- SURVEYED PROPERTY LINE
 - - - DEED PROPERTY LINE (NOT SURVEYED)
 - SURVEYED TIE LINE
 - DEED LINE
 - - - OLD DEED LINE (TO BE VACATED)
 - - - FLOOD ZONE LIMITS
 - - - CENTERLINE BRANCH/EDGE LAKE
 - - - OVERHEAD ELECTRIC LINE
 - - - FENCE LINE
 - - - SET 1/2" REBAR
 - - - FOUND 5/8" REBAR
 - - - FOUND PIPE
 - - - UTILITY POLE
 - - - CORNER CALLED FOR POINT
 - - - REINFORCED CONCRETE PIPE

**SURVEY FOR
SMITH MOUNTAIN LAKE
DOCK & LODGE**

LOT 1 THROUGH LOT 3
LOT A THROUGH LOT C
BEING EXISTING TAX PARCELS
REFLECTING PROPERTY LINE ADJUSTMENT
(SEE NOTE 7)

GRETNA MAGISTERIAL DISTRICT
PITTSYLVANIA COUNTY, VIRGINIA
SURVEYED APRIL 23, 2012
REVISED MAY 30, 2012
REVISED OCTOBER 4, 2012
JOB NO. 24-12
SHEET 3 OF 3



COMPASS POINT LAND SURVEYING, P.C., P.O. BOX 887, ROCKY MOUNT, VIRGINIA, 24151, PHONE: 640-483-9478

| VIRGINIA | | CLERK'S OFFICE OF THE CIRCUIT COURT OF PITTSYLVANIA COUNTY | |
|-------------|---------|--|---------|
| Clerk | 13 | St. R. Tax | 039 |
| St. R. Tax | 039 | Co. R. Tax | 213 |
| Co. R. Tax | 213 | Grantee Tax | 038/220 |
| Grantee Tax | 038/220 | Process Fee | 036 |
| Process Fee | 036 | OSP | 143 |
| OSP | 143 | VSLP | 145 |
| VSLP | 145 | Transfer | 212 |
| Transfer | 212 | Tech Fee | 106 |
| Tech Fee | 106 | | |
| Overseer | 443 | | |
| Total | 1315 | | |

The foregoing instrument with acknowledgment was admitted to record on May 24 2012 at 11:27 A.M. in 44 Page 162C Instrument 13-03143

Shelly A. Hays, Clerk

H.R. HAYMAKRE, JR., CLERK

By: *[Signature]* Deputy Clerk

Witnessed by: *[Signature]*

| VIRGINIA | | CLERK'S OFFICE OF THE CIRCUIT COURT OF PITTSYLVANIA COUNTY | |
|-------------|---------|--|---------|
| Clerk | 301 | St. R. Tax | 1315 |
| St. R. Tax | 039 | Co. R. Tax | 213 |
| Co. R. Tax | 213 | Grantee Tax | 038/220 |
| Grantee Tax | 038/220 | Process Fee | 036 |
| Process Fee | 036 | OSP | 143 |
| OSP | 143 | VSLP | 145 |
| VSLP | 145 | Transfer | 212 |
| Transfer | 212 | Tech Fee | 106 |
| Tech Fee | 106 | | |
| Overseer | 443 | | |
| Total | 1315 | | |

The foregoing instrument with acknowledgment was admitted to record on May 24 2012 at 11:27 A.M. in 44 Page 162C Instrument 13-03143

Shelly A. Hays, Clerk

H.R. HAYMAKRE, JR., CLERK

By: *[Signature]* Deputy Clerk

Witnessed by: *[Signature]*