

Exhibit D
Well Rights & Disclosures
Tate County, Mississippi for Auction Tracts 1 ,2, 4, 5, 6, 7 & 8

Auction Tracts 1 & 2

1. Tract 1 has an existing well serving the manufactured home. The out buildings on Tract 1 are currently served by the well on Tract 2. Purchaser shall connect out buildings to existing well on Tract 1 within one year or negotiate mutually acceptable agreement with Purchaser of Tract 2. Tract 2 shall allow Tract 1 to be serviced by well for one year.
2. Tracts 1 and 2 shall equally maintain existing well in its current use without either party overburdening it.

Auction Tracts 4, 5, 6 & 8

1. Tracts 4 & 5 have existing operational wells connected together and service Tracts 4, 5, 6 & 8.
2. Tract 6 has a well not currently being used. Purchaser within one year may connect to existing well on Tract 6 or negotiate with Tracts 4 & 5 to continue well use as it currently exists without any party overburdening it.
3. Tract 8 has one year to drill a new well or negotiate with Tracts 4 & 5 to continue well use as it currently exists without any party overburdening it.

All Wells and Waterlines

1. Maintenance and electricity fees for wells, water pumps, waterlines and all components shall be equally shared by the Tracts benefiting from the use. Wells shall be used for residential use and livestock watering only, no irrigation. Waterlines will be maintained where they currently exist by the party benefiting from said waterline.

Pond

1. Tracts 7 & 8, if sold separately, will share equally in the maintenance of the pond and pond dam.

BUYER ACKNOWLEDGMENT:

BUYER

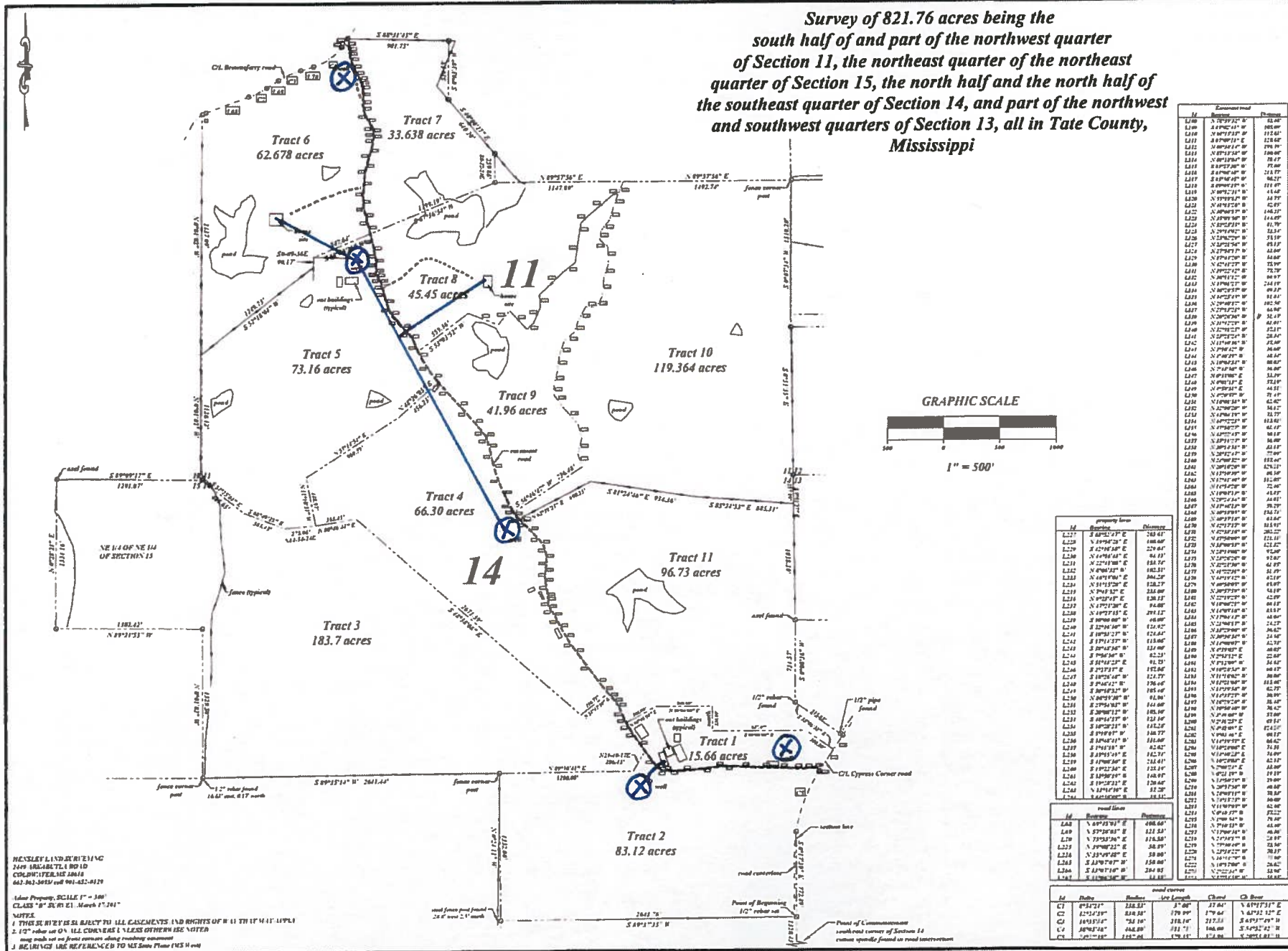
DATE

BUYER

DATE

For Illustration Purposes Only

Survey of 821.76 acres being the south half of and part of the northwest quarter of Section 15, the northeast quarter of the northeast quarter of Section 15, the north half and the north half of the southeast quarter of Section 14, and part of the northwest and southwest quarters of Section 13, all in Tate County, Mississippi



Id	Bearing	Distance	Id	Bearing	Distance
L210	N 89°52'12" E	15.00	L270	N 89°52'12" E	15.00
L211	S 89°52'12" E	15.00	L271	N 89°52'12" E	15.00
L212	N 89°52'12" E	15.00	L272	N 89°52'12" E	15.00
L213	S 89°52'12" E	15.00	L273	N 89°52'12" E	15.00
L214	N 89°52'12" E	15.00	L274	N 89°52'12" E	15.00
L215	S 89°52'12" E	15.00	L275	N 89°52'12" E	15.00
L216	N 89°52'12" E	15.00	L276	N 89°52'12" E	15.00
L217	S 89°52'12" E	15.00	L277	N 89°52'12" E	15.00
L218	N 89°52'12" E	15.00	L278	N 89°52'12" E	15.00
L219	S 89°52'12" E	15.00	L279	N 89°52'12" E	15.00
L220	N 89°52'12" E	15.00	L280	N 89°52'12" E	15.00
L221	S 89°52'12" E	15.00	L281	N 89°52'12" E	15.00
L222	N 89°52'12" E	15.00	L282	N 89°52'12" E	15.00
L223	S 89°52'12" E	15.00	L283	N 89°52'12" E	15.00
L224	N 89°52'12" E	15.00	L284	N 89°52'12" E	15.00
L225	S 89°52'12" E	15.00	L285	N 89°52'12" E	15.00
L226	N 89°52'12" E	15.00	L286	N 89°52'12" E	15.00
L227	S 89°52'12" E	15.00	L287	N 89°52'12" E	15.00
L228	N 89°52'12" E	15.00	L288	N 89°52'12" E	15.00
L229	S 89°52'12" E	15.00	L289	N 89°52'12" E	15.00
L230	N 89°52'12" E	15.00	L290	N 89°52'12" E	15.00
L231	S 89°52'12" E	15.00	L291	N 89°52'12" E	15.00
L232	N 89°52'12" E	15.00	L292	N 89°52'12" E	15.00
L233	S 89°52'12" E	15.00	L293	N 89°52'12" E	15.00
L234	N 89°52'12" E	15.00	L294	N 89°52'12" E	15.00
L235	S 89°52'12" E	15.00	L295	N 89°52'12" E	15.00
L236	N 89°52'12" E	15.00	L296	N 89°52'12" E	15.00
L237	S 89°52'12" E	15.00	L297	N 89°52'12" E	15.00
L238	N 89°52'12" E	15.00	L298	N 89°52'12" E	15.00
L239	S 89°52'12" E	15.00	L299	N 89°52'12" E	15.00
L240	N 89°52'12" E	15.00	L300	N 89°52'12" E	15.00
L241	S 89°52'12" E	15.00	L301	N 89°52'12" E	15.00
L242	N 89°52'12" E	15.00	L302	N 89°52'12" E	15.00
L243	S 89°52'12" E	15.00	L303	N 89°52'12" E	15.00
L244	N 89°52'12" E	15.00	L304	N 89°52'12" E	15.00
L245	S 89°52'12" E	15.00	L305	N 89°52'12" E	15.00
L246	N 89°52'12" E	15.00	L306	N 89°52'12" E	15.00
L247	S 89°52'12" E	15.00	L307	N 89°52'12" E	15.00
L248	N 89°52'12" E	15.00	L308	N 89°52'12" E	15.00
L249	S 89°52'12" E	15.00	L309	N 89°52'12" E	15.00
L250	N 89°52'12" E	15.00	L310	N 89°52'12" E	15.00
L251	S 89°52'12" E	15.00	L311	N 89°52'12" E	15.00
L252	N 89°52'12" E	15.00	L312	N 89°52'12" E	15.00
L253	S 89°52'12" E	15.00	L313	N 89°52'12" E	15.00
L254	N 89°52'12" E	15.00	L314	N 89°52'12" E	15.00
L255	S 89°52'12" E	15.00	L315	N 89°52'12" E	15.00
L256	N 89°52'12" E	15.00	L316	N 89°52'12" E	15.00
L257	S 89°52'12" E	15.00	L317	N 89°52'12" E	15.00
L258	N 89°52'12" E	15.00	L318	N 89°52'12" E	15.00
L259	S 89°52'12" E	15.00	L319	N 89°52'12" E	15.00
L260	N 89°52'12" E	15.00	L320	N 89°52'12" E	15.00
L261	S 89°52'12" E	15.00	L321	N 89°52'12" E	15.00
L262	N 89°52'12" E	15.00	L322	N 89°52'12" E	15.00
L263	S 89°52'12" E	15.00	L323	N 89°52'12" E	15.00
L264	N 89°52'12" E	15.00	L324	N 89°52'12" E	15.00
L265	S 89°52'12" E	15.00	L325	N 89°52'12" E	15.00
L266	N 89°52'12" E	15.00	L326	N 89°52'12" E	15.00
L267	S 89°52'12" E	15.00	L327	N 89°52'12" E	15.00
L268	N 89°52'12" E	15.00	L328	N 89°52'12" E	15.00
L269	S 89°52'12" E	15.00	L329	N 89°52'12" E	15.00
L270	N 89°52'12" E	15.00	L330	N 89°52'12" E	15.00
L271	S 89°52'12" E	15.00	L331	N 89°52'12" E	15.00
L272	N 89°52'12" E	15.00	L332	N 89°52'12" E	15.00
L273	S 89°52'12" E	15.00	L333	N 89°52'12" E	15.00
L274	N 89°52'12" E	15.00	L334	N 89°52'12" E	15.00
L275	S 89°52'12" E	15.00	L335	N 89°52'12" E	15.00
L276	N 89°52'12" E	15.00	L336	N 89°52'12" E	15.00
L277	S 89°52'12" E	15.00	L337	N 89°52'12" E	15.00
L278	N 89°52'12" E	15.00	L338	N 89°52'12" E	15.00
L279	S 89°52'12" E	15.00	L339	N 89°52'12" E	15.00
L280	N 89°52'12" E	15.00	L340	N 89°52'12" E	15.00
L281	S 89°52'12" E	15.00	L341	N 89°52'12" E	15.00
L282	N 89°52'12" E	15.00	L342	N 89°52'12" E	15.00
L283	S 89°52'12" E	15.00	L343	N 89°52'12" E	15.00
L284	N 89°52'12" E	15.00	L344	N 89°52'12" E	15.00
L285	S 89°52'12" E	15.00	L345	N 89°52'12" E	15.00
L286	N 89°52'12" E	15.00	L346	N 89°52'12" E	15.00
L287	S 89°52'12" E	15.00	L347	N 89°52'12" E	15.00
L288	N 89°52'12" E	15.00	L348	N 89°52'12" E	15.00
L289	S 89°52'12" E	15.00	L349	N 89°52'12" E	15.00
L290	N 89°52'12" E	15.00	L350	N 89°52'12" E	15.00
L291	S 89°52'12" E	15.00	L351	N 89°52'12" E	15.00
L292	N 89°52'12" E	15.00	L352	N 89°52'12" E	15.00
L293	S 89°52'12" E	15.00	L353	N 89°52'12" E	15.00
L294	N 89°52'12" E	15.00	L354	N 89°52'12" E	15.00
L295	S 89°52'12" E	15.00	L355	N 89°52'12" E	15.00
L296	N 89°52'12" E	15.00	L356	N 89°52'12" E	15.00
L297	S 89°52'12" E	15.00	L357	N 89°52'12" E	15.00
L298	N 89°52'12" E	15.00	L358	N 89°52'12" E	15.00
L299	S 89°52'12" E	15.00	L359	N 89°52'12" E	15.00
L300	N 89°52'12" E	15.00	L360	N 89°52'12" E	15.00

HEXLEY LINDA BISHAW
 2449 BRISSETTE RD
 COLONY, MISSISSIPPI 38815
 662-861-8958 cell 901-432-8129

Adverse Property, SCALE 1" = 300'
 CLASS "B" SURVEY March 17, 2014

NOTES:
 1. THIS SURVEY IS SUBJECT TO ALL EASEMENTS AND RIGHTS OF RECORD WHICH MAY AFFECT THE SURVEYED PROPERTY.
 2. 1/2" color set on front corners along roadway easement.
 3. REFERENCE LINE REFERENCED TO NE Corner Plat 145 H and