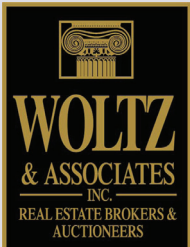
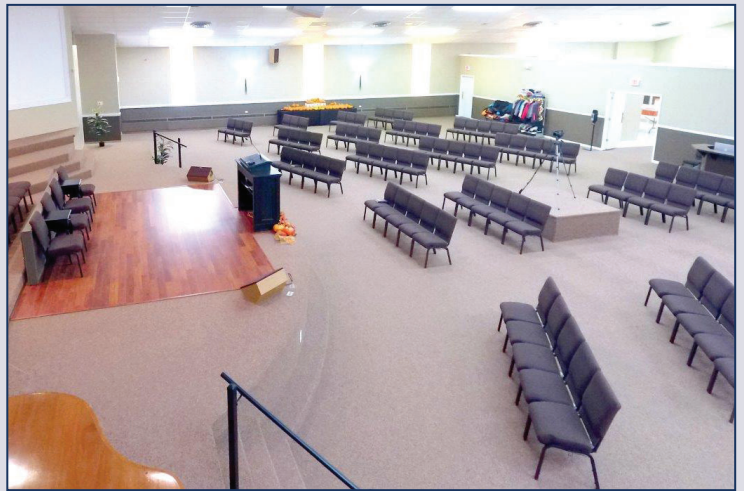


FOR SALE: 41,000+ SF BUILDING

929 Murray Ave SE , Roanoke, Virginia 24013



Over 41,000 SF of space makes this property ideal for church, retail, office, warehouse, school, wedding/ events venue or more. Building is clean and in good condition. Area in lower level capable of seating 400 people for banquet events. Only 2 minutes to downtown/I 581, shopping, restaurants and 3 minutes to Carilion Memorial Hospital. **Asking Price: \$900,000**



For more information, please call Listing Agents

David P. Boush, REALTOR – 540-871-5810 (mobile)

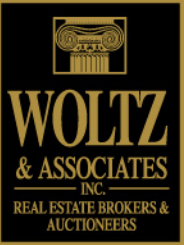
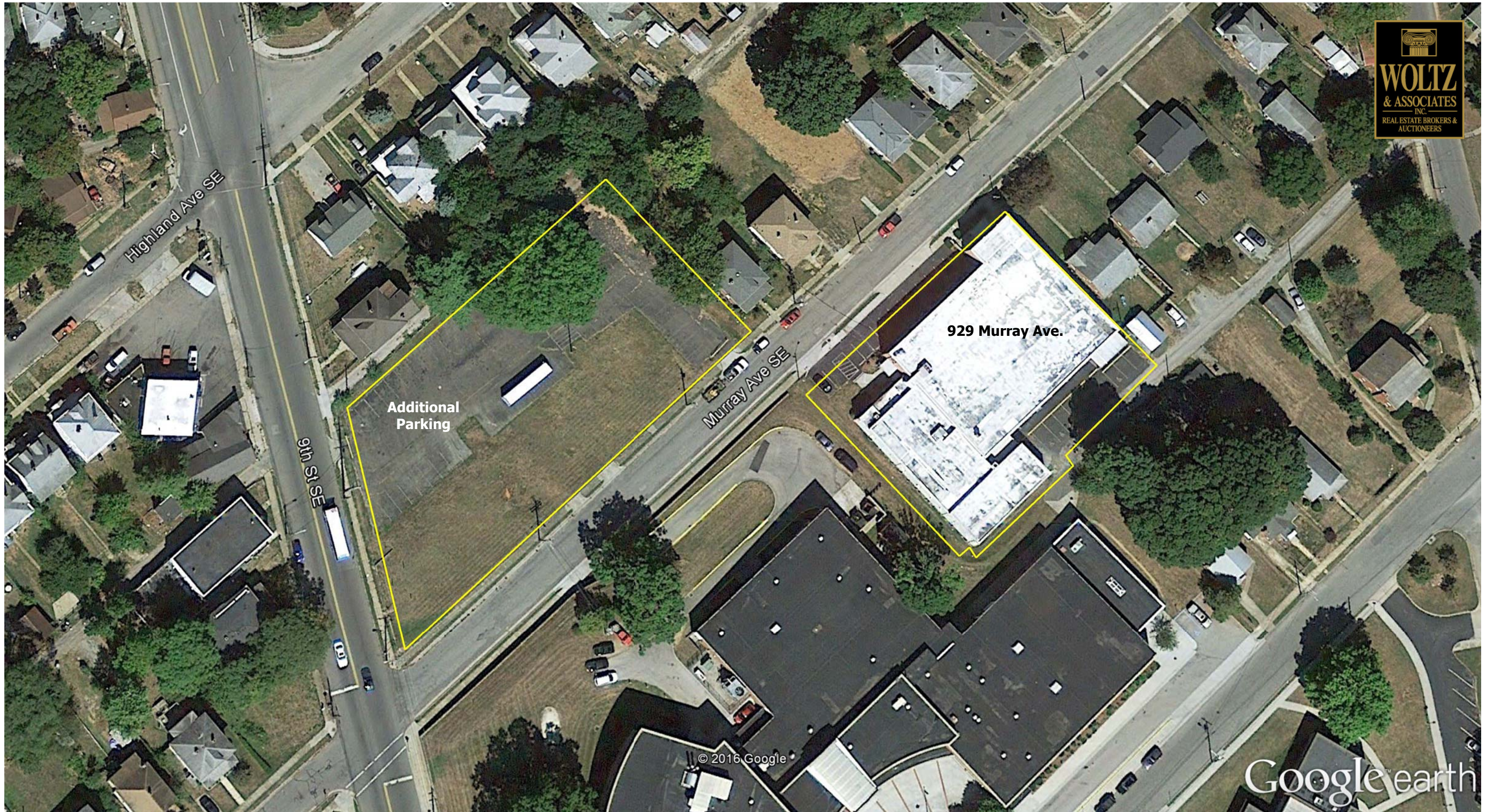
Sam Hardy, Associate Broker – 540-761-9166 (mobile)

540-342-3560 • woltz.com

1.56± Acres

Annual Taxes: \$11,750

Tax Map Numbers: 4122602,
4122025, 4122023, 4122024,
4122038



Google Earth Pro

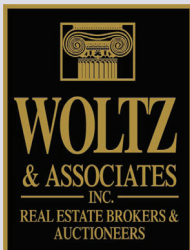
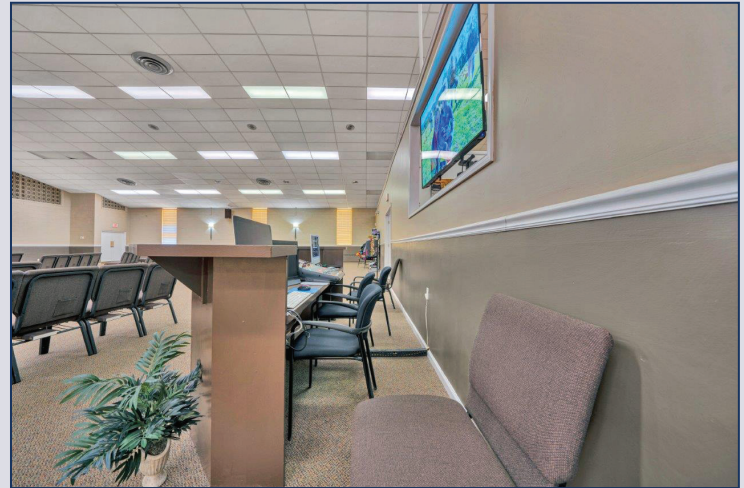
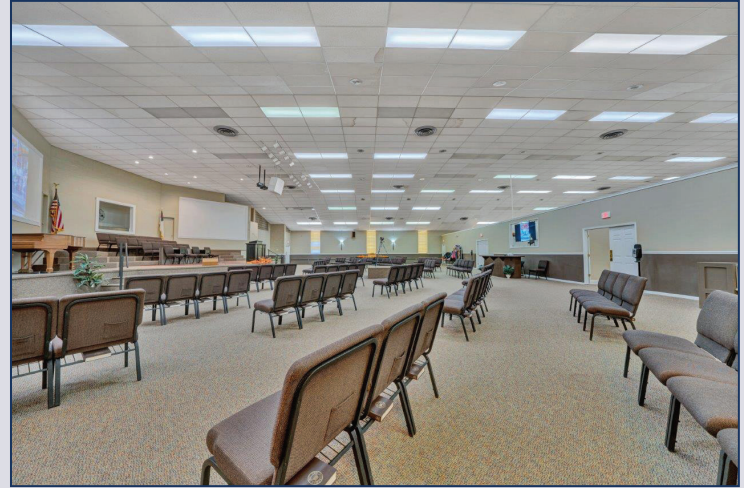
feet
meters



929 Murray Ave SE, Roanoke, VA
Boundaries are Approximate

FOR SALE: 41,000+ SF BUILDING

929 Murray Ave SE , Roanoke, Virginia 24013



For more information, please call Listing Agents

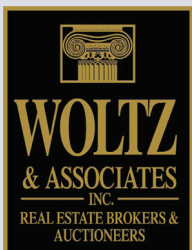
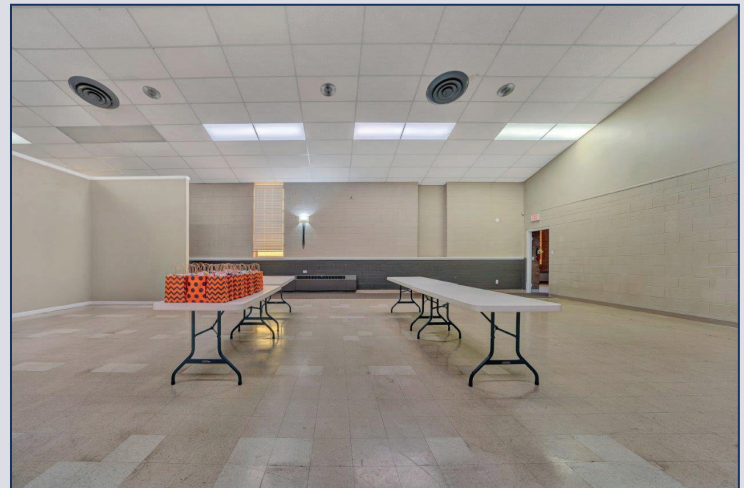
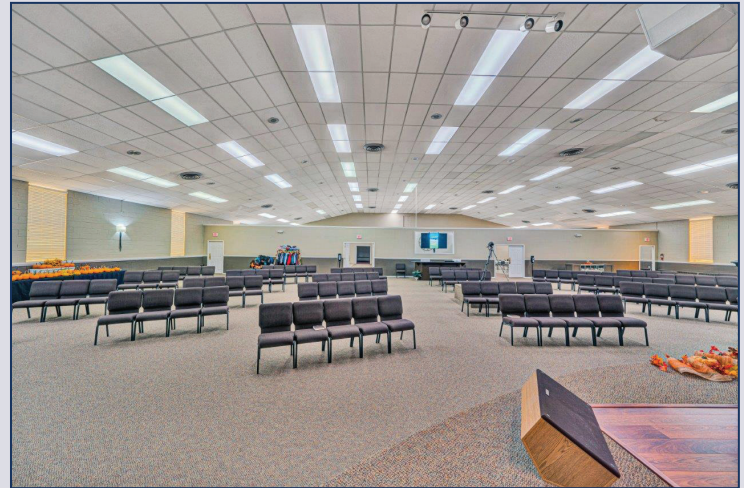
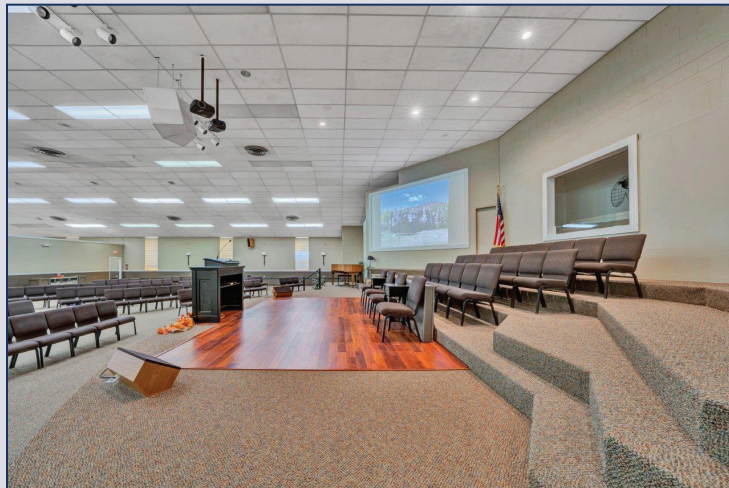
David P. Boush, REALTOR – 540-871-5810 (mobile)

Sam Hardy, Associate Broker – 540-761-9166 (mobile)

540-342-3560 • woltz.com

FOR SALE: 41,000+ SF BUILDING

929 Murray Ave SE , Roanoke, Virginia 24013



For more information, please call Listing Agents

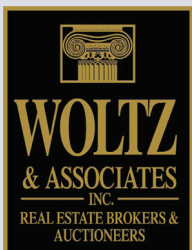
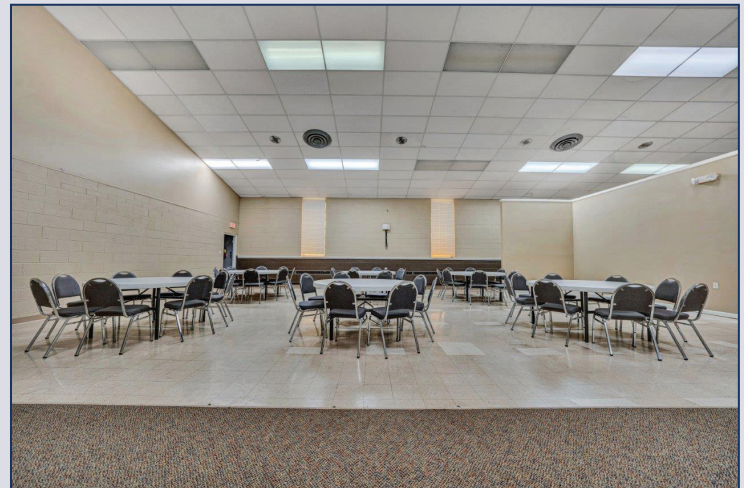
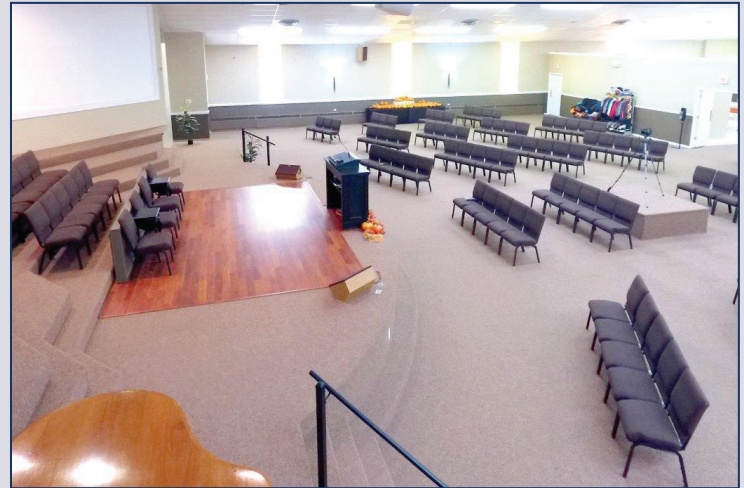
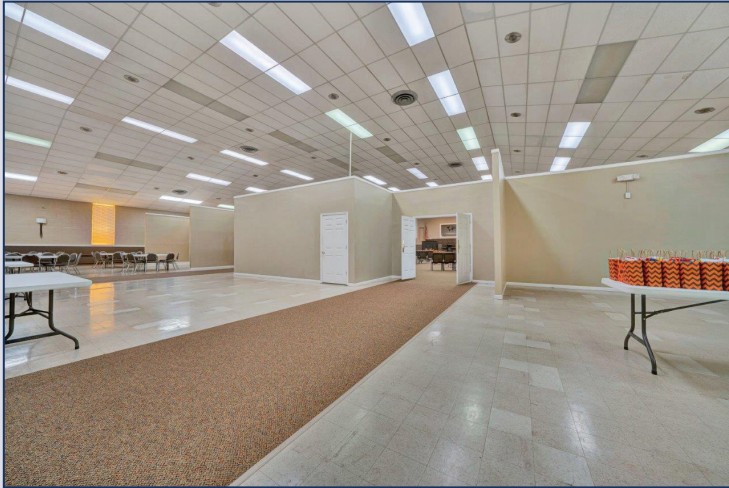
David P. Boush, REALTOR – 540-871-5810 (mobile)

Sam Hardy, Associate Broker – 540-761-9166 (mobile)

540-342-3560 • woltz.com

FOR SALE: 41,000+ SF BUILDING

929 Murray Ave SE , Roanoke, Virginia 24013



For more information, please call Listing Agents

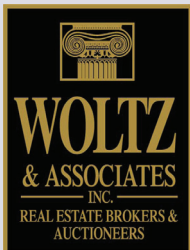
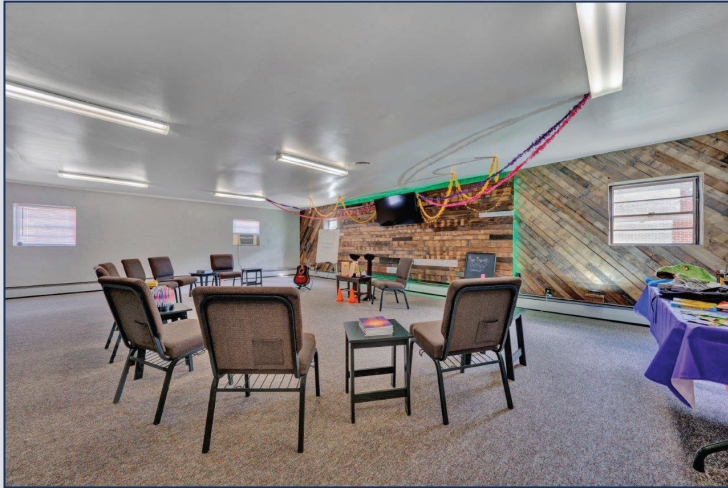
David P. Boush, REALTOR – 540-871-5810 (mobile)

Sam Hardy, Associate Broker – 540-761-9166 (mobile)

540-342-3560 • woltz.com

FOR SALE: 41,000+ SF BUILDING

929 Murray Ave SE , Roanoke, Virginia 24013



For more information, please call Listing Agents

David P. Boush, REALTOR – 540-871-5810 (mobile)

Sam Hardy, Associate Broker – 540-761-9166 (mobile)

540-342-3560 • woltz.com

Property Type: Commercial**Address:** 929 Murray AVE SE, Roanoke, VA 24013

List Number:	884459	Status:	Active
List Price:	\$900,000	Subdiv Map:	
Type of Business:	Church	Zoning Code:	
Year Built:	1953	Tax ID:	4122602
Construction Status:	Completed	Annual Taxes:	\$11,750
Total Acreage:		Water ID:	
Lot Dimensions:	1.56	Water Class:	N/A
Municipality:	City of Roanoke		
Listing Type: Exclusive Right to Represent Seller			
Major Area: 01 - City of Roanoke			
Area: 0160 - City of Roanoke - SE			

Gross Building SqFt:	Retail SqFt:	Warehouse SqFt:
Gross Lot SqFt:	Office SqFt:	Parking SqFt:
Industrial SqFt:	Leaseable SqFt:	Lease Available: No
Nbr of Stories:	On site Parking: Yes	Flood Area: No
# Restrooms:	Parking Spaces: 85	Basement Y/N:
Road Frontage:	Traffic Count:	Length of Waterfront:

Directions: I-581 N/US-220 N take exit 6 toward Vinton. Take Right on Elm Ave. SE to a right onto 9th Street to Left onto Murray Ave. Parking lot if on the left and building is on the right.

Public Remarks: REDUCED PRICE! Over 41,000 SF of space makes this property ideal for church, retail, office, warehouse, school, wedding/events venue or more. Building is clean and in good condition. Area in lower level capable of seating 400 people for banquet events. Only 2 minutes to downtown/I-581, shopping, restaurants, and 3 minutes to Carilion Roanoke Memorial Hospital.

Private Remarks: Square footage/seating provided by the seller. Call agent for showing appointment.

Legal:

Showing Instructions: Appointment; Call Listing Agent	Floors:	Carpet; Concrete; Laminate; Vinyl
Commercial Type: Office; Retail; Warehouse	Water Description:	Public Water
Construction: Brick	Sewer Description:	Public Sewer
Sale Includes: Building	Water Heater Type:	Tank
Heating: Gas Heat	Water Heater Energy:	Natural Gas
Cooling: Electric	Topography:	Level
Internet Access: Cable	Views:	City
Roof System: Other - See Remarks	Documents Available:	Appraisal
	Miscellaneous Info:	Ceiling Height: 26; Equipment Pass: No; Inventory Included: No
	Limited Service:	Not Limited Service

Owner: Fellowship Baptist Church **Owner Phone:** 000-000-0000

List Date: 10/08/2021

Start Showing Date:

Expiration Date: 04/08/2022

Original List Price: 1,250,000

Yard Sign: Yes

LA: DAVID POWELL BOUSH 540-871-5810 david@woltz.com

LO: WOLTZ & ASSOCIATES 540-342-3560 jim@woltz.com

Days On Market: 168

Cumulative DOM: 300

Lock Box: None

Lock Box Hours:

Buyer Agt Authorized: Yes

BA Comp: 3.5%

Subagent Authorized: No

SA Comp: 0

Variable Rate Brkrge: No

Information is deemed to be reliable, but is not guaranteed. © 2022 **MLS** and **FBS**. Prepared by Hannah Sprague, Firm Staff on Thursday, March 24, 2022 12:58 PM. The information on this sheet has been made available by the MLS and may not be the listing of the provider.

Fellowship Baptist Church
Account Inquiry - All Detail (Filtered)
Totals as of March 31, 2015

Note: The Report Option to include Open Transactions is selected.

Account: 550110 - Electricity-Auditorium

Budgeted Amount:	\$0.00	Beginning Month Balance:	\$639.76	Current Balance:	\$1,144.11
YTD Actual:	\$1,144.11	MTD Debits:	\$504.35	Beginning Balance:	\$0.00
Remaining in Budget:	\$0.00	MTD Credits:	\$0.00	YTD Debits:	\$1,144.11
YTD Budget:	\$0.00	YTD Encumbered:	\$0.00	YTD Credits:	\$0.00

	This Year	Last Year	Budget	Remaining	Budget/Actual
January	\$348.79	\$326.18	\$0.00	\$0.00	\$0.00
February	\$290.97	\$286.08	\$0.00	\$0.00	\$0.00
March	\$504.35	\$356.50	\$0.00	\$0.00	\$0.00
April	\$0.00	\$284.47	\$0.00	\$0.00	\$0.00
May	\$0.00	\$376.27	\$0.00	\$0.00	\$0.00
June	\$0.00	\$478.95	\$0.00	\$0.00	\$0.00
July	\$0.00	\$702.70	\$0.00	\$0.00	\$0.00
August	\$0.00	\$631.39	\$0.00	\$0.00	\$0.00
September	\$0.00	\$573.57	\$0.00	\$0.00	\$0.00
October	\$0.00	\$396.60	\$0.00	\$0.00	\$0.00
November	\$0.00	\$334.42	\$0.00	\$0.00	\$0.00
December	\$0.00	\$382.24	\$0.00	\$0.00	\$0.00
Closing Month	\$0.00	(\$5,129.37)			

Ref No.	Date	Src	Status	Explanation	Payee	Amount
2594	01/14/2007	CHK	C		Appalachian Power	\$259.39
4017	02/13/2007	CHK	C		Appalachian Power	\$277.20
4064	03/13/2007	CHK	C		Appalachian Power	\$342.65
4119	04/09/2007	CHK	C		Appalachian Power	\$378.32
4170	05/09/2007	CHK	C		Appalachian Power	\$345.61
4283	06/13/2007	CHK	C		Appalachian Power	\$486.84
4337	07/16/2007	CHK	C		Appalachian Power	\$565.51
4357	08/08/2007	CHK	C		Appalachian Power	\$237.00
4391	09/12/2007	CHK	C		Appalachian Power	\$726.36
4432	10/10/2007	CHK	C		Appalachian Power	\$558.51
4473	11/07/2007	CHK	C		Appalachian Power	\$245.99
4544	12/12/2007	CHK	C		Appalachian Power	\$223.50
3	12/31/2007	ADJ	C	Year End Clearing Transaction		(\$4,646.88)
4803	01/16/2008	CHK	C		Appalachian Power	\$208.38
4855	02/13/2008	CHK	C		Appalachian Power	\$219.89
4895	03/11/2008	CHK	C		Appalachian Power	\$266.06
4938	04/09/2008	CHK	C		Appalachian Power	\$301.35
4999	05/14/2008	CHK	C		Appalachian Power	\$301.35
4612	06/11/2008	CHK	C		Appalachian Power	\$244.30
4677	07/16/2008	CHK	C		Appalachian Power	\$716.79
4744	08/20/2008	CHK	C		Appalachian Power	\$781.97
5043	09/10/2008	CHK	C		Appalachian Power	\$631.93
5096	10/08/2008	CHK	C		Appalachian Power	\$704.33
5178	11/19/2008	CHK	C		Appalachian Power	\$372.99
5236	12/17/2008	CHK	C		Appalachian Power	\$426.72
8	12/31/2008	JRE	C	Year End Clearing Transaction		(\$5,176.06)
5274	01/14/2009	CHK	C		Appalachian Power	\$423.24
5341	02/17/2009	CHK	C		Appalachian Power	\$323.75
5392	03/10/2009	CHK	C		Appalachian Power	\$293.46
5448	04/12/2009	CHK	C		Appalachian Power	\$366.60
5517	05/11/2009	CHK	C		Appalachian Power	\$430.91
5564	06/09/2009	CHK	C		Appalachian Power	\$487.60
5653	07/21/2009	CHK	C		Appalachian Power	\$1,109.74
5685	08/11/2009	CHK	C		Appalachian Power	\$820.35
5740	09/15/2009	CHK	C		Appalachian Power	\$924.89
5794	10/12/2009	CHK	C		Appalachian Power	\$499.16
5866	11/23/2009	CHK	C		Appalachian Power	\$398.84
5929	12/22/2009	CHK	C		Appalachian Power	\$429.69
14	12/31/2009	JRE	C	Year End Clearing Transaction		(\$6,508.23)

Account Inquiry - All Detail (Filtered)
Totals as of March 31, 2015

Note: The Report Option to include Open Transactions is selected.

Ref No.	Date	Src	Status	Explanation	Payee	Amount
3970	01/12/2010	CHK	C		Appalachian Power	\$393.32
3021	02/09/2010	CHK	C		Appalachian Power	\$369.67
3086	03/16/2010	CHK	C		Appalachian Power	\$341.03
3129	04/13/2010	CHK	C		Appalachian Power	\$382.54
3187	05/11/2010	CHK	C		Appalachian Power	\$307.80
3252	06/16/2010	CHK	C		Appalachian Power	\$494.69
3292	07/13/2010	CHK	C		Appalachian Power	\$706.47
3341	08/10/2010	CHK	C		Appalachian Power	\$943.85
3390	09/14/2010	CHK	C		Appalachian Power	\$649.11
3420	10/10/2010	CHK	C		Appalachian Power	\$326.95
3462	11/08/2010	CHK	C		Appalachian Power	\$298.41
3530	12/14/2010	CHK	C		Appalachian Power	\$352.76
26	12/31/2010	JRE	C	Year End Clearing Transaction		(\$5,566.60)
3564	01/10/2011	CHK	C		Appalachian Power	\$263.02
3624	02/14/2011	CHK	C		Appalachian Power	\$247.68
3686	03/13/2011	CHK	C		Appalachian Power	\$300.72
3734	04/12/2011	CHK	C		Appalachian Power	\$289.35
3782	05/10/2011	CHK	C		Appalachian Power	\$255.28
3835	06/10/2011	CHK	C		Appalachian Power	\$331.02
3878	07/12/2011	CHK	C		Appalachian Power	\$834.61
3922	08/09/2011	CHK	C		Appalachian Power	\$747.51
3970	09/13/2011	CHK	C		Appalachian Power	\$546.83
7035	10/14/2011	CHK	C		Appalachian Power	\$357.51
7076	11/08/2011	CHK	C		Appalachian Power	\$391.60
7141	12/12/2011	CHK	C		Appalachian Power	\$410.52
31	12/31/2011	JRE	C	Year End Clearing Transaction		(\$4,975.65)
7200	01/17/2012	CHK	C		Appalachian Power	\$433.26
7233	02/14/2012	CHK	C		Appalachian Power	\$374.75
7278	03/13/2012	CHK	C		Appalachian Power	\$360.22
7323	04/10/2012	CHK	C		Appalachian Power	\$372.20
7384	05/15/2012	CHK	C		Appalachian Power	\$313.20
7424	06/10/2012	CHK	C		Appalachian Power	\$616.63
7469	07/17/2012	CHK	C		Appalachian Power	\$813.27
7515	08/15/2012	CHK	C		Appalachian Power	\$474.69
7561	09/18/2012	CHK	C		Appalachian Power	\$637.30
7585	10/09/2012	CHK	C		Appalachian Power	\$519.85
7622	11/07/2012	CHK	C		Appalachian Power	\$307.58
7673	12/11/2012	CHK	C		Appalachian Power	\$443.06
35	12/31/2012	JRE	C	Year End Clearing Transaction		(\$5,666.01)
7698	01/12/2013	CHK	C		Appalachian Power	\$357.24
7753	02/13/2013	CHK	C		Appalachian Power	\$411.40
7802	03/19/2013	CHK	C		Appalachian Power	\$351.60
7828	04/15/2013	CHK	C		Appalachian Power	\$325.78
7870	05/14/2013	CHK	C		Appalachian Power	\$338.96
7914	06/18/2013	CHK	C		Appalachian Power	\$475.11
7940	07/10/2013	CHK	C		Appalachian Power	\$470.70
7981	08/13/2013	CHK	C		Appalachian Power	\$751.79
8022	09/17/2013	CHK	C		Appalachian Power	\$510.85
8052	10/08/2013	CHK	C		Appalachian Power	\$370.16
8082	11/12/2013	CHK	C		Appalachian Power	\$295.38
8129	12/10/2013	CHK	C		Appalachian Power	\$378.95
41	12/31/2013	JRE	C	Year End Clearing Transaction		(\$5,037.92)
8166	01/21/2014	CHK	C		Appalachian Power	\$326.18
8191	02/12/2014	CHK	C		Appalachian Power	\$286.08
8220	03/13/2014	CHK	C		Appalachian Power	\$356.50
8248	04/09/2014	CHK	C	99001460809	Appalachian Power	\$284.47
8293	05/14/2014	CHK	C		Appalachian Power	\$376.27
8323	06/11/2014	CHK	C		Appalachian Power	\$478.95
8359	07/29/2014	CHK	C		Appalachian Power	\$702.70
8381	08/13/2014	CHK	C		Appalachian Power	\$631.39
8405	09/10/2014	CHK	C		Appalachian Power	\$573.57

Fellowship Baptist Church
Account Inquiry - All Detail (Filtered)
Totals as of March 31, 2015

Note: The Report Option to include Open Transactions is selected.

Ref No.	Date	Src	Status	Explanation	Payee	Amount
8443	10/15/2014	CHK	C		Appalachian Power	\$396.60
8485	11/12/2014	CHK	C		Appalachian Power	\$334.42
8521	12/10/2014	CHK	C		Appalachian Power	\$382.24
44	12/31/2014	JRE	C	Year End Clearing Transaction		(\$5,129.37)
8558	01/21/2015	CHK	C		Appalachian Power	\$348.79
8583	02/20/2015	CHK	C		Appalachian Power	\$290.97
8616	03/18/2015	CHK	O		Appalachian Power	\$504.35
8640	04/15/2015	CHK	O		Appalachian Power	\$265.36
8674	05/13/2015	CHK	O		Appalachian Power	\$347.81
8725	06/25/2015	CHK	O		Appalachian Power	\$658.69
8744	07/19/2015	CHK	O	Policy#: 375M60663	Appalachian Power	\$1,032.18
8775	08/12/2015	CHK	O		Appalachian Power	\$1,179.80
8804	09/09/2015	CHK	O		Appalachian Power	\$1,129.54
						<hr/> <hr/> \$5,757.49

Fellowship Baptist Church
Account Inquiry - All Detail (Filtered)
Totals as of March 31, 2015

Note: The Report Option to include Open Transactions is selected.

Account: 550110 - Electricity-Auditorium

Budgeted Amount:	\$0.00	Beginning Month Balance:	\$639.76	Current Balance:	\$1,144.11
YTD Actual:	\$1,144.11	MTD Debits:	\$504.35	Beginning Balance:	\$0.00
Remaining in Budget:	\$0.00	MTD Credits:	\$0.00	YTD Debits:	\$1,144.11
YTD Budget:	\$0.00	YTD Encumbered:	\$0.00	YTD Credits:	\$0.00

	<u>This Year</u>	<u>Last Year</u>	<u>Budget</u>	<u>Remaining</u>	<u>Budget/Actual</u>
January	\$348.79	\$326.18	\$0.00	\$0.00	\$0.00
February	\$290.97	\$286.08	\$0.00	\$0.00	\$0.00
March	\$504.35	\$356.50	\$0.00	\$0.00	\$0.00
April	\$0.00	\$284.47	\$0.00	\$0.00	\$0.00
May	\$0.00	\$376.27	\$0.00	\$0.00	\$0.00
June	\$0.00	\$478.95	\$0.00	\$0.00	\$0.00
July	\$0.00	\$702.70	\$0.00	\$0.00	\$0.00
August	\$0.00	\$631.39	\$0.00	\$0.00	\$0.00
September	\$0.00	\$573.57	\$0.00	\$0.00	\$0.00
October	\$0.00	\$396.60	\$0.00	\$0.00	\$0.00
November	\$0.00	\$334.42	\$0.00	\$0.00	\$0.00
December	\$0.00	\$382.24	\$0.00	\$0.00	\$0.00
Closing Month	\$0.00	(\$5,129.37)			

<u>Ref No.</u>	<u>Date</u>	<u>Src</u>	<u>Status</u>	<u>Explanation</u>	<u>Payee</u>	<u>Amount</u>
2594	01/14/2007	CHK	C		Appalachian Power	\$259.39
4017	02/13/2007	CHK	C		Appalachian Power	\$277.20
4064	03/13/2007	CHK	C		Appalachian Power	\$342.65
4119	04/09/2007	CHK	C		Appalachian Power	\$378.32
4170	05/09/2007	CHK	C		Appalachian Power	\$345.61
4283	06/13/2007	CHK	C		Appalachian Power	\$486.84
4337	07/16/2007	CHK	C		Appalachian Power	\$565.51
4357	08/08/2007	CHK	C		Appalachian Power	\$237.00
4391	09/12/2007	CHK	C		Appalachian Power	\$726.36
4432	10/10/2007	CHK	C		Appalachian Power	\$558.51
4473	11/07/2007	CHK	C		Appalachian Power	\$245.99
4544	12/12/2007	CHK	C		Appalachian Power	\$223.50
3	12/31/2007	ADJ	C	Year End Clearing Transaction		(\$4,646.88)
4803	01/16/2008	CHK	C		Appalachian Power	\$208.38
4855	02/13/2008	CHK	C		Appalachian Power	\$219.89
4895	03/11/2008	CHK	C		Appalachian Power	\$266.06
4938	04/09/2008	CHK	C		Appalachian Power	\$301.35
4999	05/14/2008	CHK	C		Appalachian Power	\$301.35
4612	06/11/2008	CHK	C		Appalachian Power	\$244.30
4677	07/16/2008	CHK	C		Appalachian Power	\$716.79
4744	08/20/2008	CHK	C		Appalachian Power	\$781.97
5043	09/10/2008	CHK	C		Appalachian Power	\$631.93
5096	10/08/2008	CHK	C		Appalachian Power	\$704.33
5178	11/19/2008	CHK	C		Appalachian Power	\$372.99
5236	12/17/2008	CHK	C		Appalachian Power	\$426.72
8	12/31/2008	JRE	C	Year End Clearing Transaction		(\$5,176.06)
5274	01/14/2009	CHK	C		Appalachian Power	\$423.24
5341	02/17/2009	CHK	C		Appalachian Power	\$323.75
5392	03/10/2009	CHK	C		Appalachian Power	\$293.46
5448	04/12/2009	CHK	C		Appalachian Power	\$366.60
5517	05/11/2009	CHK	C		Appalachian Power	\$430.91
5564	06/09/2009	CHK	C		Appalachian Power	\$487.60
5653	07/21/2009	CHK	C		Appalachian Power	\$1,109.74
5685	08/11/2009	CHK	C		Appalachian Power	\$820.35
5740	09/15/2009	CHK	C		Appalachian Power	\$924.89
5794	10/12/2009	CHK	C		Appalachian Power	\$499.16
5866	11/23/2009	CHK	C		Appalachian Power	\$398.84
5929	12/22/2009	CHK	C		Appalachian Power	\$429.69
14	12/31/2009	JRE	C	Year End Clearing Transaction		(\$6,508.23)

Fellowship Baptist Church
Account Inquiry - All Detail (Filtered)
Totals as of March 31, 2015

Note: The Report Option to include Open Transactions is selected.

Ref No.	Date	Src	Status	Explanation	Payee	Amount
5970	01/12/2010	CHK	C		Appalachian Power	\$393.32
6021	02/09/2010	CHK	C		Appalachian Power	\$369.67
6086	03/16/2010	CHK	C		Appalachian Power	\$341.03
6129	04/13/2010	CHK	C		Appalachian Power	\$382.54
6187	05/11/2010	CHK	C		Appalachian Power	\$307.80
6252	06/16/2010	CHK	C		Appalachian Power	\$494.69
6292	07/13/2010	CHK	C		Appalachian Power	\$706.47
6341	08/10/2010	CHK	C		Appalachian Power	\$943.85
6390	09/14/2010	CHK	C		Appalachian Power	\$649.11
6420	10/10/2010	CHK	C		Appalachian Power	\$326.95
6462	11/08/2010	CHK	C		Appalachian Power	\$298.41
6530	12/14/2010	CHK	C		Appalachian Power	\$352.76
26	12/31/2010	JRE	C	Year End Clearing Transaction		(\$5,566.60)
6564	01/10/2011	CHK	C		Appalachian Power	\$263.02
6624	02/14/2011	CHK	C		Appalachian Power	\$247.68
6686	03/13/2011	CHK	C		Appalachian Power	\$300.72
6734	04/12/2011	CHK	C		Appalachian Power	\$289.35
6782	05/10/2011	CHK	C		Appalachian Power	\$255.28
6835	06/10/2011	CHK	C		Appalachian Power	\$331.02
6878	07/12/2011	CHK	C		Appalachian Power	\$834.61
6922	08/09/2011	CHK	C		Appalachian Power	\$747.51
6970	09/13/2011	CHK	C		Appalachian Power	\$546.83
7035	10/14/2011	CHK	C		Appalachian Power	\$357.51
7076	11/08/2011	CHK	C		Appalachian Power	\$391.60
7141	12/12/2011	CHK	C		Appalachian Power	\$410.52
31	12/31/2011	JRE	C	Year End Clearing Transaction		(\$4,975.65)
7200	01/17/2012	CHK	C		Appalachian Power	\$433.26
7233	02/14/2012	CHK	C		Appalachian Power	\$374.75
7278	03/13/2012	CHK	C		Appalachian Power	\$360.22
7323	04/10/2012	CHK	C		Appalachian Power	\$372.20
7384	05/15/2012	CHK	C		Appalachian Power	\$313.20
7424	06/10/2012	CHK	C		Appalachian Power	\$616.63
7469	07/17/2012	CHK	C		Appalachian Power	\$813.27
7515	08/15/2012	CHK	C		Appalachian Power	\$474.69
7561	09/18/2012	CHK	C		Appalachian Power	\$637.30
7585	10/09/2012	CHK	C		Appalachian Power	\$519.85
7622	11/07/2012	CHK	C		Appalachian Power	\$307.58
7673	12/11/2012	CHK	C		Appalachian Power	\$443.06
35	12/31/2012	JRE	C	Year End Clearing Transaction		(\$5,666.01)
7698	01/12/2013	CHK	C		Appalachian Power	\$357.24
7753	02/13/2013	CHK	C		Appalachian Power	\$411.40
7802	03/19/2013	CHK	C		Appalachian Power	\$351.60
7828	04/15/2013	CHK	C		Appalachian Power	\$325.78
7870	05/14/2013	CHK	C		Appalachian Power	\$338.96
7914	06/18/2013	CHK	C		Appalachian Power	\$475.11
7940	07/10/2013	CHK	C		Appalachian Power	\$470.70
7981	08/13/2013	CHK	C		Appalachian Power	\$751.79
8022	09/17/2013	CHK	C		Appalachian Power	\$510.85
8052	10/08/2013	CHK	C		Appalachian Power	\$370.16
8082	11/12/2013	CHK	C		Appalachian Power	\$295.38
8129	12/10/2013	CHK	C		Appalachian Power	\$378.95
41	12/31/2013	JRE	C	Year End Clearing Transaction		(\$5,037.92)
8166	01/21/2014	CHK	C		Appalachian Power	\$326.18
8191	02/12/2014	CHK	C		Appalachian Power	\$286.08
8220	03/13/2014	CHK	C		Appalachian Power	\$356.50
8248	04/09/2014	CHK	C	99001460809	Appalachian Power	\$284.47
8293	05/14/2014	CHK	C		Appalachian Power	\$376.27
8323	06/11/2014	CHK	C		Appalachian Power	\$478.95
8359	07/29/2014	CHK	C		Appalachian Power	\$702.70
8381	08/13/2014	CHK	C		Appalachian Power	\$631.39
8405	09/10/2014	CHK	C		Appalachian Power	\$573.57

Note: The Report Option to include Open Transactions is selected.



The City of Roanoke, VA

Parcel Id: 4122602

Property Address:

929 MURRAY AVE SE

ROANOKE, VA 24013



SUMMARY:

Mailing Address:

929 MURRAY AVE SE

ROANOKE, VA 24013

Neighborhood: 840 - Southeast

Property Class: 455-Comm/Indust-
Religious

Legal Description: LTS 1-2 11-12&PT ALLEY B V SEC
B BLK 2

Zoning: IN

Property Acreage: 0.6681

Property Sq. Footage: 29102

Property Frontage: 190

Property Depth: 150.00

FLOOD ZONE INFORMATION:

Special Flood Hazard Area:

Firm Panel: 51161C0168G

Floodway:

OWNERSHIP HISTORY:

Sale Date	Sale Amount	Grantee	Grantor	Document Number
1952-07-10	\$1,400.00	FELLOWSHIP BAPTIST CHURCH	NORTH THOMAS A (Inactive)	
1920-06-16	\$0.00	NORTH THOMAS A (Inactive)	DEVALL LAND CORP (Inactive)	
N/A	\$0.00	DEVALL LAND CORP (Inactive)		

ASSESSMENTS:

Valuation Date	Land Value	Improvement Value	Total Value
2016-01-01	\$29,000.00	\$999,400.00	\$1,028,400.00

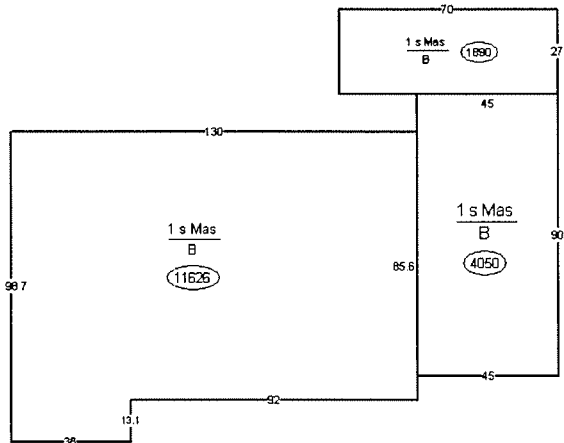
2015-01-01	\$29,000.00	\$999,400.00	\$1,028,400.00
2014-01-01	\$29,000.00	\$908,500.00	\$937,500.00
2013-01-01	\$29,000.00	\$908,500.00	\$937,500.00
2012-01-01	\$29,000.00	\$908,500.00	\$937,500.00

RESIDENTIAL DWELLING DETAIL:

Primary Photo:



Primary Sketch:



IMPROVEMENTS:

IMPROVEMENT 1			
1 Story			
Structure:		Roof:	
Year Built:	1953	Roof Style:	1
Number of Stories:	1	Roof Cover:	
Construction Exterior:		Plumbing:	
Foundation:		2 Fixture:	
Structure:	Fire Resistant	3 Fixture:	
Size S/F:	17566	4 Fixture:	
Lower Split Level/Foyer:		5 Fixture:	
Lower Finished:		Heating / Air:	
Total Bedrooms:		Heating Type:	35132 sf
Total Rooms:	0	Central Air:	N

Attic:	Fireplaces:	NO
Attic S/F: None	Porches:	
Attic Fin S/F:	Enclosed Porch:	
Basement:	Open Porch:	
Basement S/F: 17566	Wood Deck:	
Basement Fin S/F: 0		
Other Improvements		
Garage		
Attached Garage:		
Detached Garage:		
Attached Carport:		
Basement Garage:		





The City of Roanoke, VA

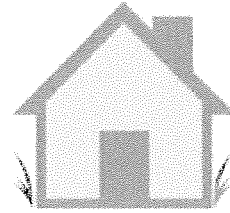
Parcel Id: 4122025

No Photo Available

Property Address:

918 MURRAY AVE SE

ROANOKE, VA 24013



SUMMARY:

Mailing Address:

929 MURRAY AVE SE

ROANOKE, VA 24013

Neighborhood: 840 - Southeast

Property Class: 155-Vacant-Religious

Legal Description: LOT 4 SECT B BLK 1 B V

Zoning: IN

Property Acreage: 0.2944

Property Sq. Footage: 12824

Property Frontage: 123

Property Depth: 150.00

FLOOD ZONE INFORMATION:

Special Flood Hazard Area:

Firm Panel: 51161C0168G

Floodway:

OWNERSHIP HISTORY:

Sale Date	Sale Amount	Grantee	Grantor	Document Number
1992-11-09	\$28,000.00	TRUSTEES OF FELLOWSHIP BAPTIST CHURC	HICKS RUTH FLORENCE DEANER (Inactive)	
1965-10-28	\$0.00	HICKS RUTH FLORENCE DEANER (Inactive)	HICKS EUGENE PRICE (Inactive)	
1946-08-15	\$2,500.00	HICKS EUGENE PRICE (Inactive)	EASTER J E (Inactive)	
1916-04-27	\$0.00	EASTER J E (Inactive)	HOOVER J A (Inactive)	
1906-05-11	\$0.00	HOOVER J A (Inactive)	DENIT CHAS D (CLERK) (Inactive)	
N/A	\$0.00	DENIT CHAS D (CLERK) (Inactive)		

ASSESSMENTS:

Valuation Date	Land Value	Improvement Value	Total Value
2016-01-01	\$17,300.00	\$0.00	\$17,300.00
2015-01-01	\$17,300.00	\$0.00	\$17,300.00
2014-01-01	\$17,300.00	\$0.00	\$17,300.00
2013-01-01	\$17,300.00	\$0.00	\$17,300.00
2012-01-01	\$17,300.00	\$0.00	\$17,300.00

RESIDENTIAL DWELLING DETAIL:

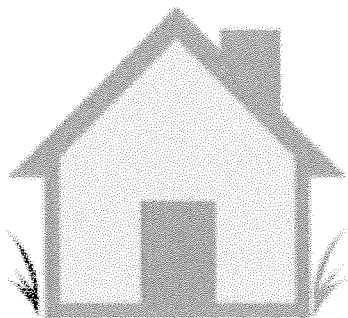
Primary Photo:

Primary Sketch:

No Photo Available



No Photo Available



IMPROVEMENTS:

PROPERTY MAP:





The City of Roanoke, VA

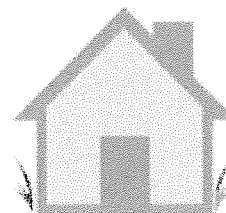
Parcel Id: 4122023

No Photo Available

Property Address:

914 9TH ST SE

ROANOKE, VA



SUMMARY:

Mailing Address:

929 MURRAY AVE SE

ROANOKE, VA 24013

Zoning: RM-2

Property Acreage: 0.4030

Property Sq. Footage: 17557

Neighborhood: 120 - Walnut Hill &
Riverland & Garden City

Property Frontage: 100

Property Class: 155-Vacant-Religious

Property Depth: 150.00

Legal Description: LOTS 1 & 2 BLK 1 SEC B B V

FLOOD ZONE INFORMATION:

Special Flood Hazard Area:

Firm Panel: 51161C0168G

Floodway:

OWNERSHIP HISTORY:

Sale Date	Sale Amount	Grantee	Grantor	Document Number
1966-10-26	\$0.00	TRS FELLOWSHIP BAPTIST CHURCH	TRS FELLOWSHIP BAPTIST CHURCH (Inact	
1966-10-26	\$4,000.00	TRS FELLOWSHIP BAPTIST CHURCH (Inact	WINGO O T (Inactive)	
1931-02-02	\$0.00	WINGO O T (Inactive)	BARKSDALE ANNIE (Inactive)	
1930-12-22	\$0.00	BARKSDALE ANNIE (Inactive)	K & M AMUSEMENT CORPN (Inactive)	
1930-08-15	\$0.00	K & M AMUSEMENT CORPN (Inactive)	BARKSDALE ANNIE (Inactive)	
1924-09-01	\$0.00	BARKSDALE ANNIE (Inactive)	STOKE H F (Inactive)	

1919-10-18	\$0.00	STOKE H F (Inactive)	BRUMFIELD ANNIE (Inactive)	
1914-06-16	\$0.00	BRUMFIELD ANNIE (Inactive)	BRUMFIELD B B (Inactive)	
1913-02-23	\$0.00	BRUMFIELD B B (Inactive)	BEAR J H (Inactive)	
1907-08-28	\$0.00	BEAR J H (Inactive)	PECK MRS BETTIE J (Inactive)	
1907-04-20	\$0.00	PECK MRS BETTIE J (Inactive)	POWELL A O (Inactive)	
1904-11-16	\$0.00	POWELL A O (Inactive)	HANKINS J B ETAL (Inactive)	
N/A	\$0.00	HANKINS J B ETAL (Inactive)		

ASSESSMENTS:

Valuation Date	Land Value	Improvement Value	Total Value
2016-01-01	\$18,200.00	\$0.00	\$18,200.00
2015-01-01	\$18,200.00	\$0.00	\$18,200.00
2014-01-01	\$18,200.00	\$0.00	\$18,200.00
2013-01-01	\$18,200.00	\$0.00	\$18,200.00
2012-01-01	\$18,200.00	\$0.00	\$18,200.00

RESIDENTIAL DWELLING DETAIL:

Primary Photo:

Primary Sketch:

No Photo Available



No Photo Available



IMPROVEMENTS:

PROPERTY MAP:





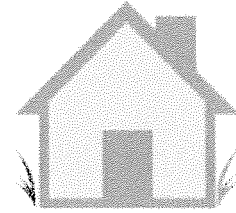
The City of Roanoke, VA

Parcel Id: 4122038

No Photo Available

Property Address:

0 MURRAY AV SE
ROANOKE, VA



SUMMARY:

Mailing Address:

929 MURRAY AVE SE
ROANOKE, VA 24013

Zoning: RM-2

Property Acreage: 0.0869

Property Sq. Footage: 3786

Neighborhood: 120 - Walnut Hill &
Riverland & Garden City

Property Frontage: 61

Property Class: 155-Vacant-Religious

Property Depth: 55.00

Legal Description: E PT LOT 3 BLK 1 B V MAP
SEC B

FLOOD ZONE INFORMATION:

Special Flood Hazard Area:

Firm Panel: 51161C0168G

Floodway:

OWNERSHIP HISTORY:

Sale Date	Sale Amount	Grantee	Grantor	Document Number
1995-06-06	\$15,000.00	TRUSTEES FELLOWSHIP BAPTIST CHURC	ARRINGTON CLARENCE G JR ETUX (Inacti	
1990-06-18	\$8,000.00	ARRINGTON CLARENCE G JR ETUX (Inacti	EVANS WILLIAM D EXEC (Inactive)	
1990-05-21	\$0.00	EVANS WILLIAM D EXEC (Inactive)	EVANS BEULAH W (Inactive)	
1970-06-22	\$3,300.00	EVANS BEULAH W (Inactive)	YEATTS LILA C (Inactive)	
1949-06-18	\$0.00	YEATTS LILA C (Inactive)	SWEENEY D F ETUX (Inactive)	
N/A	\$0.00	SWEENEY D F ETUX (Inactive)		

ASSESSMENTS:

Valuation Date	Land Value	Improvement Value	Total Value
2016-01-01	\$3,800.00	\$0.00	\$3,800.00
2015-01-01	\$3,800.00	\$0.00	\$3,800.00
2014-01-01	\$3,800.00	\$0.00	\$3,800.00
2013-01-01	\$3,800.00	\$0.00	\$3,800.00
2012-01-01	\$3,800.00	\$0.00	\$3,800.00

RESIDENTIAL DWELLING DETAIL:

Primary Photo:

Primary Sketch:

No Photo Available



No Photo Available



IMPROVEMENTS:

PROPERTY MAP:





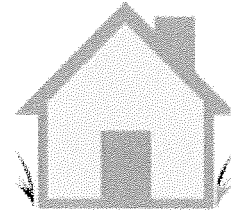
The City of Roanoke, VA

Parcel Id: 4122024

No Photo Available

Property Address:

0 9TH ST SE
ROANOKE, VA 24013



SUMMARY:

Mailing Address:

929 MURRAY AVE
ROANOKE, VA 24013

Zoning: RM-2

Property Acreage: 0.1151

Property Sq. Footage: 5012

Neighborhood: 120 - Walnut Hill &
Riverland & Garden City

Property Frontage: 66

Property Class: 100-Vacant Land

Property Depth: 102.00

Legal Description: LOT 3 BLK 1 SEC B B V

FLOOD ZONE INFORMATION:

Special Flood Hazard Area:

Firm Panel: 51161C0168G

Floodway:

OWNERSHIP HISTORY:

Sale Date	Sale Amount	Grantee	Grantor	Document Number
2009-09-09	\$9,030.00	FELLOWSHIP BAPTIST CHURCH	LEE BARRY R (Inactive)	090010305
1995-09-29	\$0.00	LEE BARRY R (Inactive)	LEE MILDRED (Inactive)	
1994-05-24	\$29,700.00	LEE MILDRED (Inactive)	LEE MILDRED E & LEE BARRY R (Inacti	
1992-04-16	\$13,000.00	LEE MILDRED E & LEE BARRY R (Inacti	EVANS BEULAH W (Inactive)	
1969-12-16	\$7,500.00	EVANS BEULAH W (Inactive)	SWEENEY FRED D (Inactive)	
1958-04-01	\$8,259.00	SWEENEY FRED D (Inactive)	HILL JOHN W & GENEVA L (Inactive)	

1957-05-01	\$9,000.00	HILL JOHN W & GENEVA L (Inactive)	SWEENEY ALLENE G (Inactive)	
1950-10-04	\$7,000.00	SWEENEY ALLENE G (Inactive)	YEATTS LILA C (Inactive)	
1949-06-18	\$10,184.00	YEATTS LILA C (Inactive)	SWEENEY DOCK F (Inactive)	
1948-10-06	\$7,500.00	SWEENEY DOCK F (Inactive)	BROYLES J E (Inactive)	
1922-10-16	\$0.00	BROYLES J E (Inactive)	BRUMFIELD ANNIE (Inactive)	
1914-06-16	\$0.00	BRUMFIELD ANNIE (Inactive)	BRUMFIELD B B (Inactive)	
N/A	\$0.00	BRUMFIELD B B (Inactive)		

ASSESSMENTS:

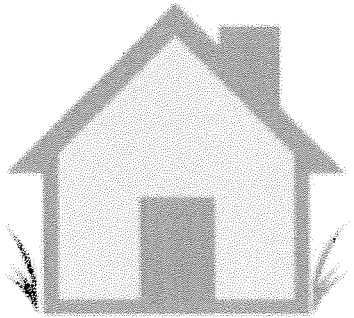
Valuation Date	Land Value	Improvement Value	Total Value
2016-01-01	\$10,300.00	\$0.00	\$10,300.00
2015-01-01	\$10,300.00	\$0.00	\$10,300.00
2014-01-01	\$10,300.00	\$0.00	\$10,300.00
2013-01-01	\$10,300.00	\$0.00	\$10,300.00
2012-01-01	\$10,300.00	\$0.00	\$10,300.00

RESIDENTIAL DWELLING DETAIL:

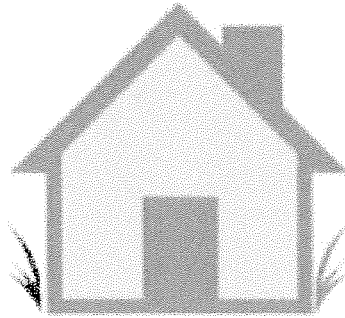
Primary Photo:

Primary Sketch:

No Photo Available



No Photo Available



IMPROVEMENTS:

PROPERTY MAP:

