

**PRORATION OF GENERAL SHALE LEASE INCOME BETWEEN TRACTS 2, 6, & 7**

**LEASE AREA = 108.04 ACRES**

**LEASE AREA ON TRACT 2 = 67.53 ACRES OR 62.50% OF LEASE**

**LEASE AREA ON TRACT 6 = 21.91 ACRES OR 20.28% OF LEASE**

**LEASE AREA ON TRACT 7 = 18.60 ACRES OR 17.22% OF LEASE**

**ANNUAL MINIMUM ROYALTY FOR LEASE = \$75,000**

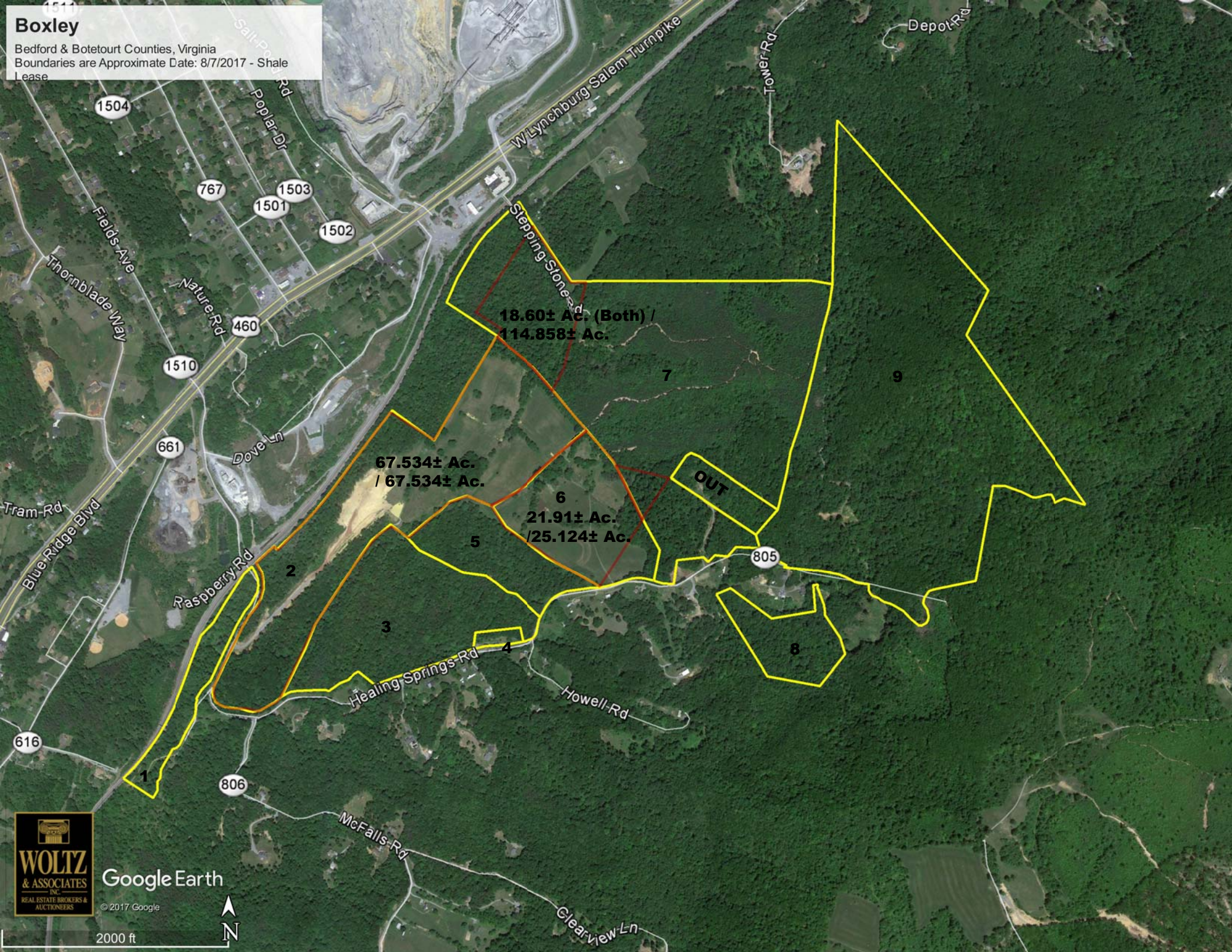
**TRACT 2 @ 62.50% = \$46,875.00**

**TRACT 6 @ 20.28% = \$15,210.00**

**TRACT 7 @ 17.22% = \$12,915.00**

**PRODUCTION ROYALTYS THAT EXCEED MINIMUM ROYALTY WILL BE PRORATED ON THE SAME PERCENTAGES.**

**Boxley**  
Bedford & Botetourt Counties, Virginia  
Boundaries are Approximate Date: 8/7/2017 - Shale  
Lease



**18.60± Ac. (Both) /  
114.858± Ac.**

**67.534± Ac.  
/ 67.534± Ac.**

**21.91± Ac.  
/ 25.124± Ac.**

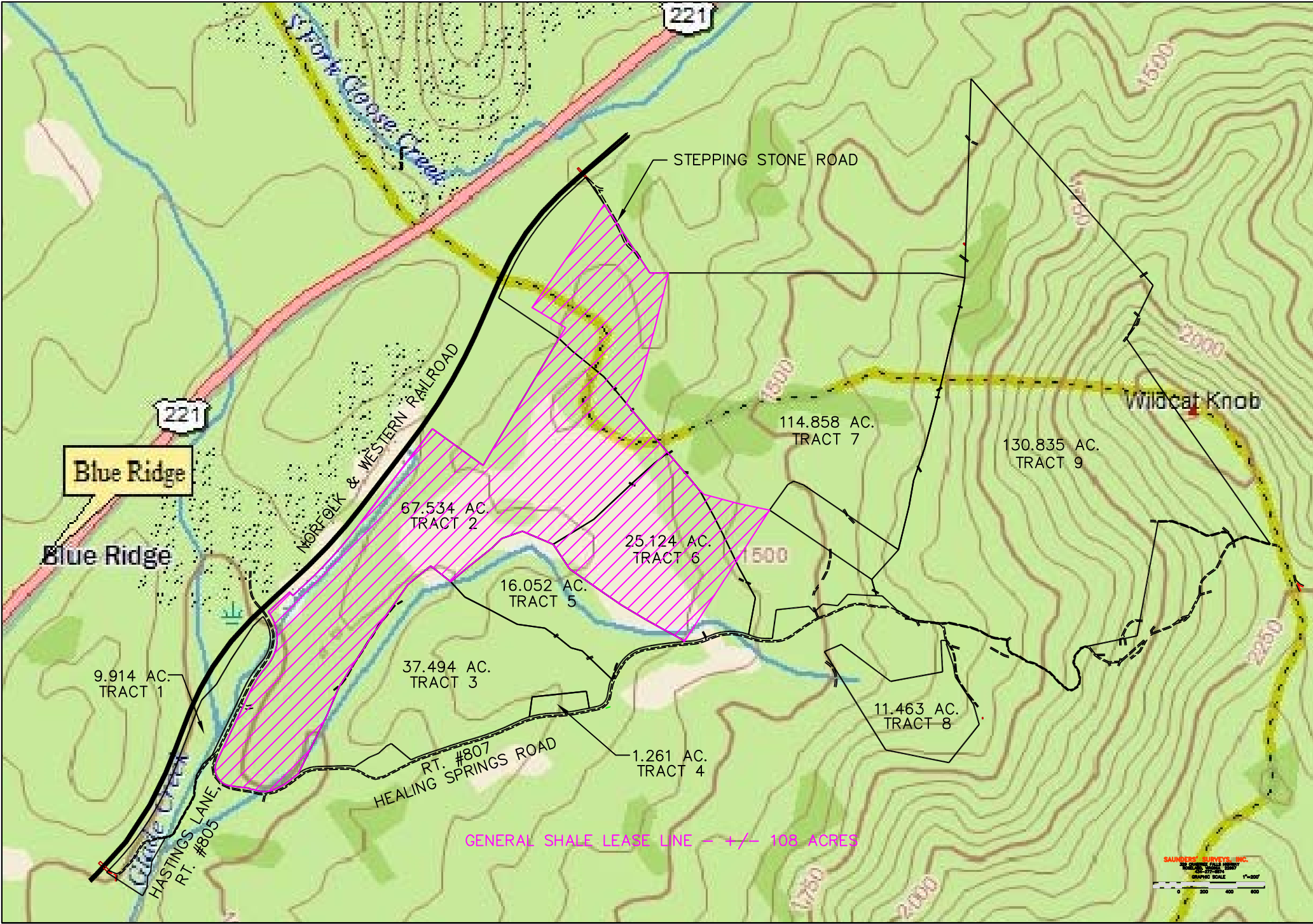
**OUT**

**WOLTZ  
& ASSOCIATES  
INC.**  
REAL ESTATE BROKERS &  
AUCTIONEERS

Google Earth  
© 2017 Google

2000 ft

N



SAUNDERS SURVEYS, INC.  
2000 4th Ave  
Greenville, SC 29615  
1-800-222-2222

