

MAGNETIC DECLINATION:
6° 00' WEST
AT SUGAR GROVE USGS
APRIL, 1997
ALL BEARINGS ARE MAGNETIC.



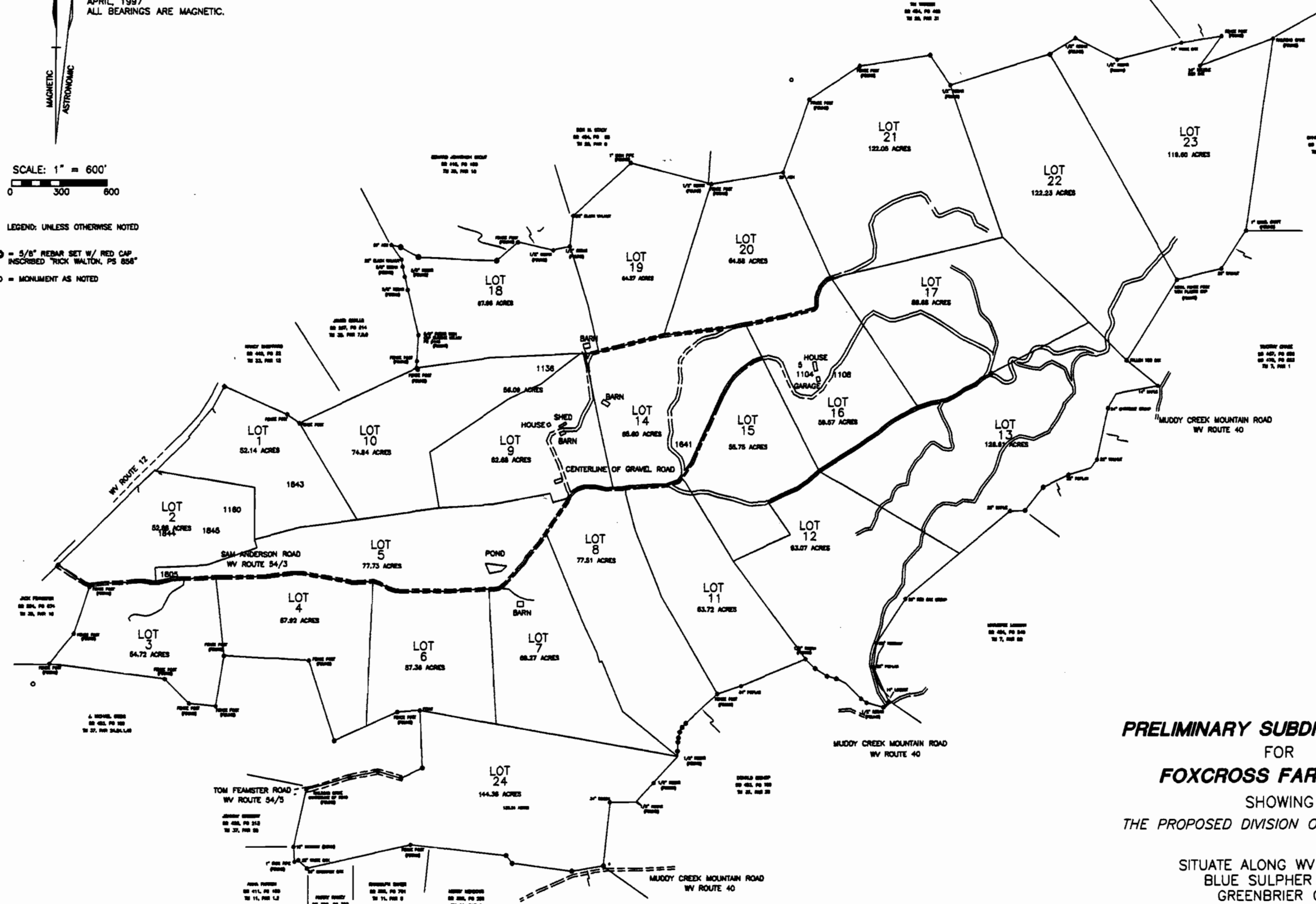
SCALE: 1" = 600'
0 300 600

LEGEND: UNLESS OTHERWISE NOTED

- ⊙ = 5/8" REBAR SET W/ RED CAP, INSCRIBED "RICK WALTON, PS 856"
- = MONUMENT AS NOTED

CHUCK	INCHES	ACRES	LENGTH	CHUCK	INCHES	ACRES	LENGTH
01	100.00	2.24	11	01	100.00	2.24	11
02	100.00	2.24	11	02	100.00	2.24	11

LINE	BEARING	DISTANCE
1	N 89° 59' 59" W	100.00
2	S 89° 59' 59" E	100.00
3	N 89° 59' 59" W	100.00
4	S 89° 59' 59" E	100.00
5	N 89° 59' 59" W	100.00
6	S 89° 59' 59" E	100.00
7	N 89° 59' 59" W	100.00
8	S 89° 59' 59" E	100.00
9	N 89° 59' 59" W	100.00
10	S 89° 59' 59" E	100.00
11	N 89° 59' 59" W	100.00
12	S 89° 59' 59" E	100.00
13	N 89° 59' 59" W	100.00
14	S 89° 59' 59" E	100.00
15	N 89° 59' 59" W	100.00
16	S 89° 59' 59" E	100.00
17	N 89° 59' 59" W	100.00
18	S 89° 59' 59" E	100.00
19	N 89° 59' 59" W	100.00
20	S 89° 59' 59" E	100.00
21	N 89° 59' 59" W	100.00
22	S 89° 59' 59" E	100.00
23	N 89° 59' 59" W	100.00
24	S 89° 59' 59" E	100.00
25	N 89° 59' 59" W	100.00
26	S 89° 59' 59" E	100.00
27	N 89° 59' 59" W	100.00
28	S 89° 59' 59" E	100.00
29	N 89° 59' 59" W	100.00
30	S 89° 59' 59" E	100.00
31	N 89° 59' 59" W	100.00
32	S 89° 59' 59" E	100.00
33	N 89° 59' 59" W	100.00
34	S 89° 59' 59" E	100.00
35	N 89° 59' 59" W	100.00
36	S 89° 59' 59" E	100.00
37	N 89° 59' 59" W	100.00
38	S 89° 59' 59" E	100.00
39	N 89° 59' 59" W	100.00
40	S 89° 59' 59" E	100.00
41	N 89° 59' 59" W	100.00
42	S 89° 59' 59" E	100.00
43	N 89° 59' 59" W	100.00
44	S 89° 59' 59" E	100.00
45	N 89° 59' 59" W	100.00
46	S 89° 59' 59" E	100.00
47	N 89° 59' 59" W	100.00
48	S 89° 59' 59" E	100.00
49	N 89° 59' 59" W	100.00
50	S 89° 59' 59" E	100.00
51	N 89° 59' 59" W	100.00
52	S 89° 59' 59" E	100.00
53	N 89° 59' 59" W	100.00
54	S 89° 59' 59" E	100.00
55	N 89° 59' 59" W	100.00
56	S 89° 59' 59" E	100.00
57	N 89° 59' 59" W	100.00
58	S 89° 59' 59" E	100.00
59	N 89° 59' 59" W	100.00
60	S 89° 59' 59" E	100.00
61	N 89° 59' 59" W	100.00
62	S 89° 59' 59" E	100.00
63	N 89° 59' 59" W	100.00
64	S 89° 59' 59" E	100.00
65	N 89° 59' 59" W	100.00
66	S 89° 59' 59" E	100.00
67	N 89° 59' 59" W	100.00
68	S 89° 59' 59" E	100.00
69	N 89° 59' 59" W	100.00
70	S 89° 59' 59" E	100.00
71	N 89° 59' 59" W	100.00
72	S 89° 59' 59" E	100.00
73	N 89° 59' 59" W	100.00
74	S 89° 59' 59" E	100.00
75	N 89° 59' 59" W	100.00
76	S 89° 59' 59" E	100.00
77	N 89° 59' 59" W	100.00
78	S 89° 59' 59" E	100.00
79	N 89° 59' 59" W	100.00
80	S 89° 59' 59" E	100.00
81	N 89° 59' 59" W	100.00
82	S 89° 59' 59" E	100.00
83	N 89° 59' 59" W	100.00
84	S 89° 59' 59" E	100.00
85	N 89° 59' 59" W	100.00
86	S 89° 59' 59" E	100.00
87	N 89° 59' 59" W	100.00
88	S 89° 59' 59" E	100.00
89	N 89° 59' 59" W	100.00
90	S 89° 59' 59" E	100.00
91	N 89° 59' 59" W	100.00
92	S 89° 59' 59" E	100.00
93	N 89° 59' 59" W	100.00
94	S 89° 59' 59" E	100.00
95	N 89° 59' 59" W	100.00
96	S 89° 59' 59" E	100.00
97	N 89° 59' 59" W	100.00
98	S 89° 59' 59" E	100.00
99	N 89° 59' 59" W	100.00
100	S 89° 59' 59" E	100.00



PRELIMINARY SUBDIVISION PLAN
FOR
FOXCROSS FARMS, LLC.
SHOWING
THE PROPOSED DIVISION OF 1885.18 ACRES

SITUATE ALONG WV ROUTE 12,
BLUE SULPHUR DISTRICT,
GREENBRIER COUNTY,
WEST VIRGINIA

AS SURVEYED IN 2001-2007
PLATTED IN JULY OF 2007

RICKFORD WALTON
PROFESSIONAL SURVEYOR
PO BOX 75
LEWISY, WV 26876
(304) 872-3042
(304) 438-4137